

WAAS CH 42829 W21A	APP CRS 212°	Rwy Idg TDZE 887 Apt Elev 887	7015
--	------------------------	---	-------------

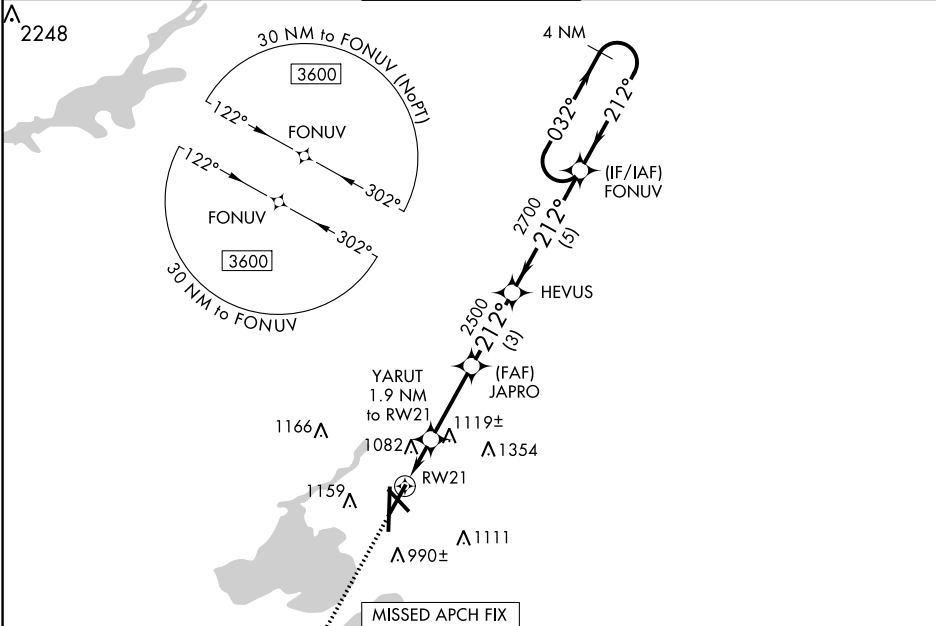
RNAV (GPS) RWY 21
DANE COUNTY RGNL-TRUAX FIELD (MSN)

⚠ For uncompensated Baro-VNAV systems, LNAV/VNAV NA below -20°C (-4°F) or above 54°C (130°F). DME/DME RNP-0.3 NA. For inop MALSR, increase LNAV/VNAV all Cats visibility to 1¾ mile and LNAV Cat C/D visibility to 1½ mile.



MISSED APPROACH:
Climb to 3600 direct WIROD and hold.

ATIS 124.65 278.3	MADISON APP CON * 135.45 343.7	MADISON TOWER * 119.3 (CTAF) 0 257.8	GND CON 121.9 348.6	CLNC DEL 121.625	UNICOM 122.95
-----------------------------	--	--	-------------------------------	----------------------------	-------------------------



ELEV 887	D TDZE 887
----------	-------------------

REIL Rwy 14
HIRL all Rwys
REIL Rws 3 and 32

3600	WIROD	* LNAV only	FONUV	4 NM	Holding Pattern
↑	⬠	YARUT 1.9 NM to RW21	JAPRO 2500	HEVUS 2700	032° → 3600
		* 1.4 NM to RW21	* 1540	2500	← 212°
		1.4 NM	0.5	3 NM	5 NM
GP 3.00°	TCH 53				
CATEGORY	A	B	C	D	
LPV DA	1087-½		200 (200-½)		
LNAV/VNAV DA	1412-1¾		525 (600-1¾)		
LNAV MDA	1380-½		493 (500-½)		1380-1 493 (500-1)
C CIRCLING	1420-1 533 (600-1)	1460-1 573 (600-1)	1460-1½ 573 (600-1½)	1700-2¾ 813 (900-2¾)	

EC-3, 31 DEC 2020 to 28 JAN 2021

EC-3, 31 DEC 2020 to 28 JAN 2021