


LOC/DME I-RRU 111.3 Chan 50	APP CRS 269°	Rwy Idg TDZE 862 Apt Elev 869
-------------------------------------------------	------------------------	---------------------------------------------------

ILS or LOC RWY 27

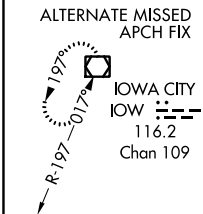
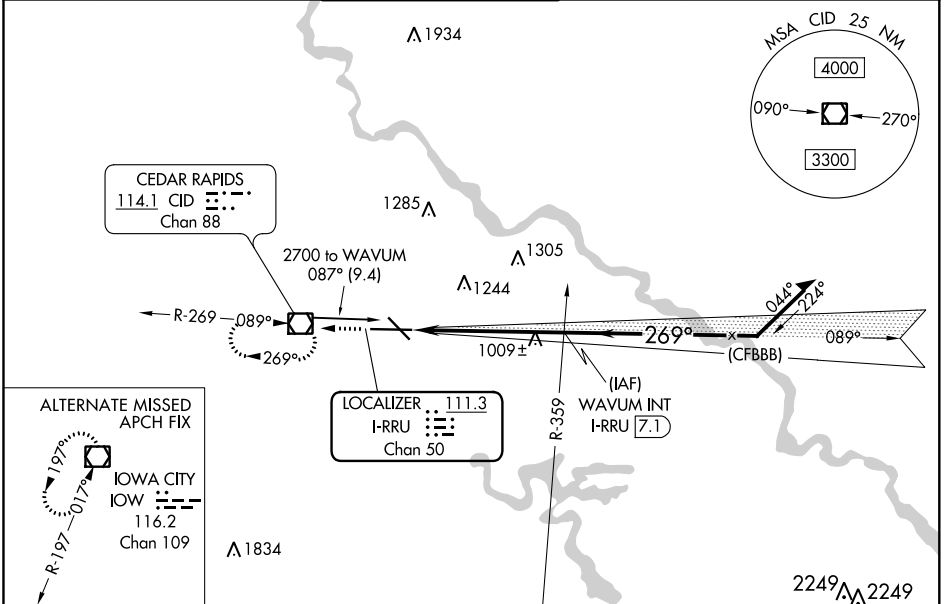
THE EASTERN IOWA (CID)

⚠ VDP NA with Iowa City altimeter setting. Autopilot coupled approach NA below 1910.
⚠ When local altimeter setting not received, use Iowa City altimeter setting increase DA 64 feet and all MDA 80 feet, increase S-LOC Cat C and D visibility to RVR 5000.
 # RVR 1800 authorized with use of FD or HUD to DA (NA when using Iowa City altimeter setting).

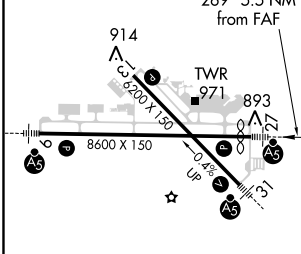
MALSR 

MISSED APPROACH: Climb to 2900 direct CID VOR/DME and hold, continue climb-in-hold to 2900.

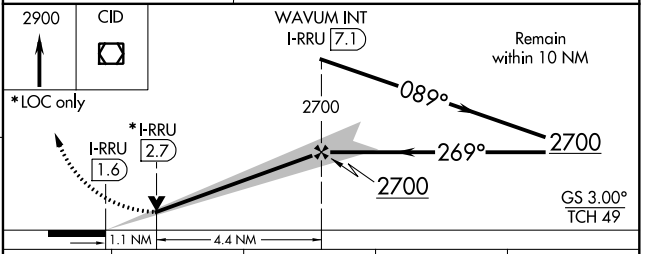
ATIS 124.15	CEDAR RAPIDS APP CON* 119.7 266.8	CEDAR RAPIDS TOWER* 118.7 (CTAF) 266.8	GND CON 121.6	CLNC DEL 125.45	UNICOM 122.95
-----------------------	---------------------------------------------	--------------------------------------------------	-------------------------	---------------------------	-------------------------



ELEV 869	D	TDZE 862
-----------------	----------	-----------------



MIRL Rwy 13-31 1	HIRL Rwy 9-27 1	REIL Rwy 13			
FAF to MAP 5.5 NM					
Knots	60	90	120	150	180
Min:Sec	5:30	3:40	2:45	2:12	1:50



CATEGORY	A	B	C	D
S-ILS 27 #	1062/24 200 (200-½)			
S-LOC 27	1260/24	398 (400-½)	1260/35	398 (400-¾)
CIRCLING	1280-1 411 (500-1)	1320-1 451 (500-1)	1320-1½ 451 (500-1½)	1420-2 551 (600-2)

NC-3, 31 DEC 2020 to 28 JAN 2021

NC-3, 31 DEC 2020 to 28 JAN 2021