


WAAS CH 72902 W27A	APP CRS 269°	Rwy Idg TDZE 862 Apt Elev 869	8175
--	------------------------	---	-------------

RNAV (GPS) RWY 27

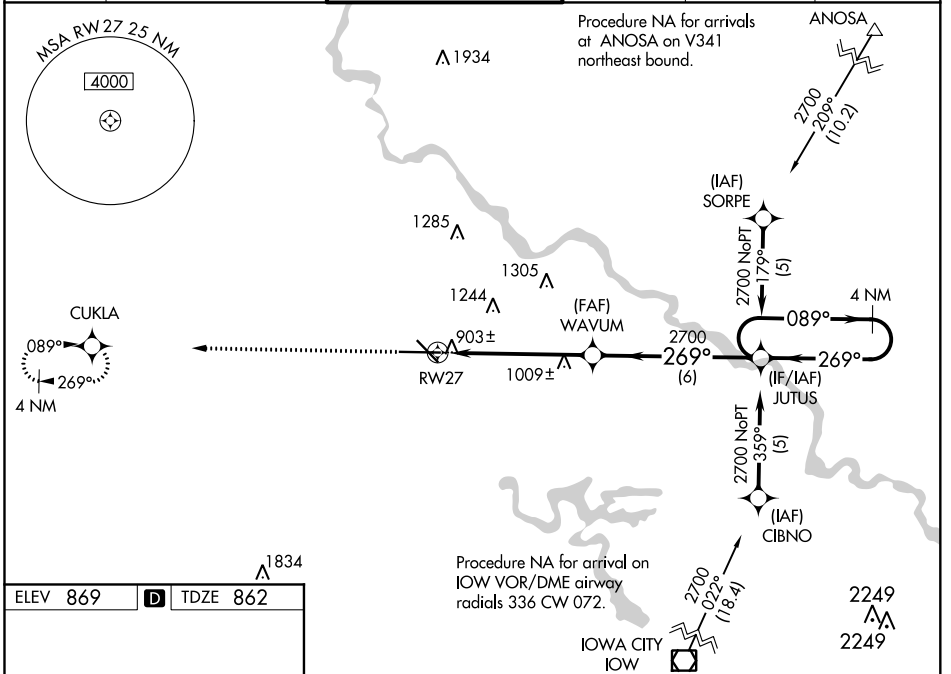
THE EASTERN IOWA (CID)

⚠ Baro-VNAV NA when using Iowa City altimeter setting.
⚠ For uncompensated Baro-VNAV systems, LNAV/VNAV NA below -16°C (4°F) or above 47°C (116°F). DME/DME RNP-0.3 NA. If local altimeter setting not received, use Iowa City altimeter setting and increase all DAs/MDAs 80 feet. For Inop MALS R increase LNAV/VNAV Cat D visibility to RVR 5000 and LNAV Cat D visibility to RVR 6000. VDP NA when using Iowa City altimeter setting.

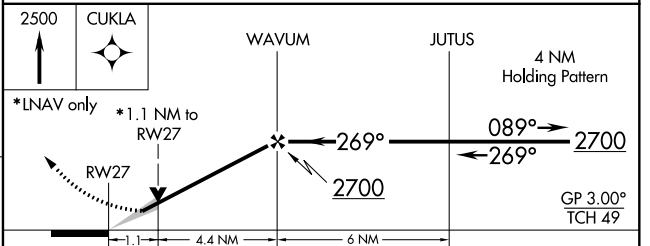
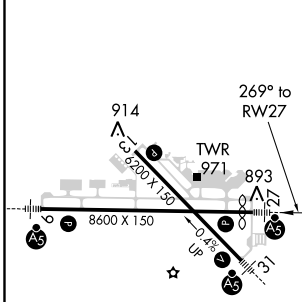
MALS R 

MISSED APPROACH: Climb to 2500 direct CUKLA and hold.

ATIS 124.15	CEDAR RAPIDS APP CON* 119.7 266.8	CEDAR RAPIDS TOWER* 118.7 (CTAF) 266.8	GND CON 121.6	CLNC DEL 125.45	UNICOM 122.95
-----------------------	---	--	-------------------------	---------------------------	-------------------------



ELEV 869	D	TDZE 862
----------	----------	----------



CATEGORY	A	B	C	D
LPV DA	1112/24 250 (300-½)			
LNAV/VNAV DA	1163/24 301 (300-½)			1163/40 301 (300-¾)
LNAV MDA	1260/24 398 (400-½)			1260/50 398 (400-1)
CIRCLING	1280-1 411 (500-1)	1320-1 451 (500-1)	1320-1½ 451 (500-1½)	1420-2 551 (600-2)

MIRL Rwy 13-31 **1**
 HIRL Rwy 9-27 **1**
 REIL Rwy 13

NC-3, 31 DEC 2020 to 28 JAN 2021

NC-3, 31 DEC 2020 to 28 JAN 2021