

# RNAV (GPS) RWY 31

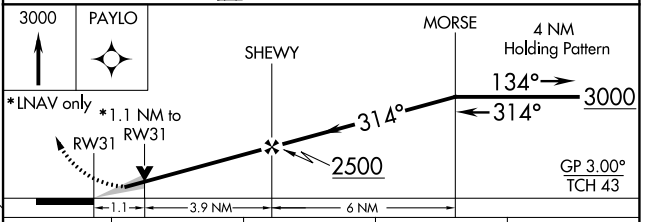
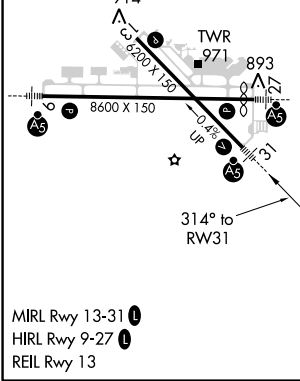
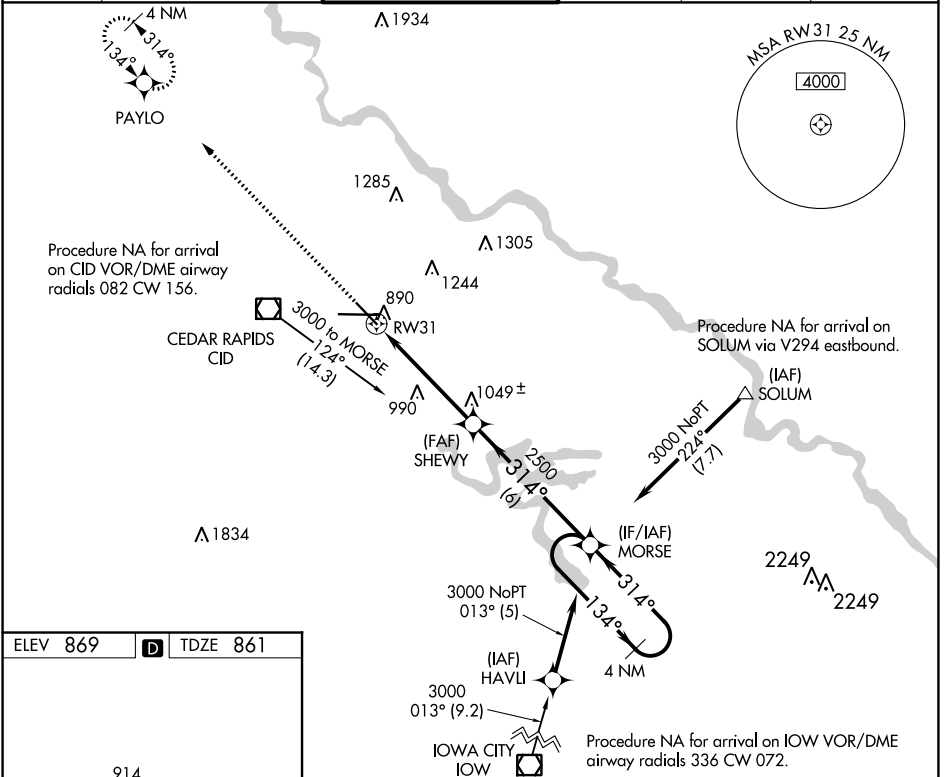
THE EASTERN IOWA (CID)

WAAS CH <b>77503</b> <b>W31A</b>	APP CRS <b>314°</b>	Rwy Idg TDZE Apt Elev	<b>6200</b> <b>861</b> <b>869</b>
--	------------------------	-----------------------------	---

RNP APCH.  
Baro-VNAV NA below -16°C (4°F).

MALSR  
MISSED APPROACH: Climb to 3000 direct PAYLO and hold.

ATIS <b>124.15</b>	CEDAR RAPIDS APP CON* <b>119.7 266.8</b>	CEDAR RAPIDS TOWER* <b>118.7 (CTAF) 266.8</b>	GND CON <b>121.6</b>	CLNC DEL <b>125.45</b>	UNICOM <b>122.95</b>
-----------------------	---	--	-------------------------	---------------------------	-------------------------



CATEGORY	A	B	C	D
LPV DA	1120-½ 259 (300-½)			
LNAV/VNAV DA	1140-½	279 (300-½)	1140-¾ 279 (300-¾)	
LNAV MDA	1240-½	379 (400-½)	1240-1 379 (400-1)	

NC-3, 31 DEC 2020 to 28 JAN 2021

NC-3, 31 DEC 2020 to 28 JAN 2021