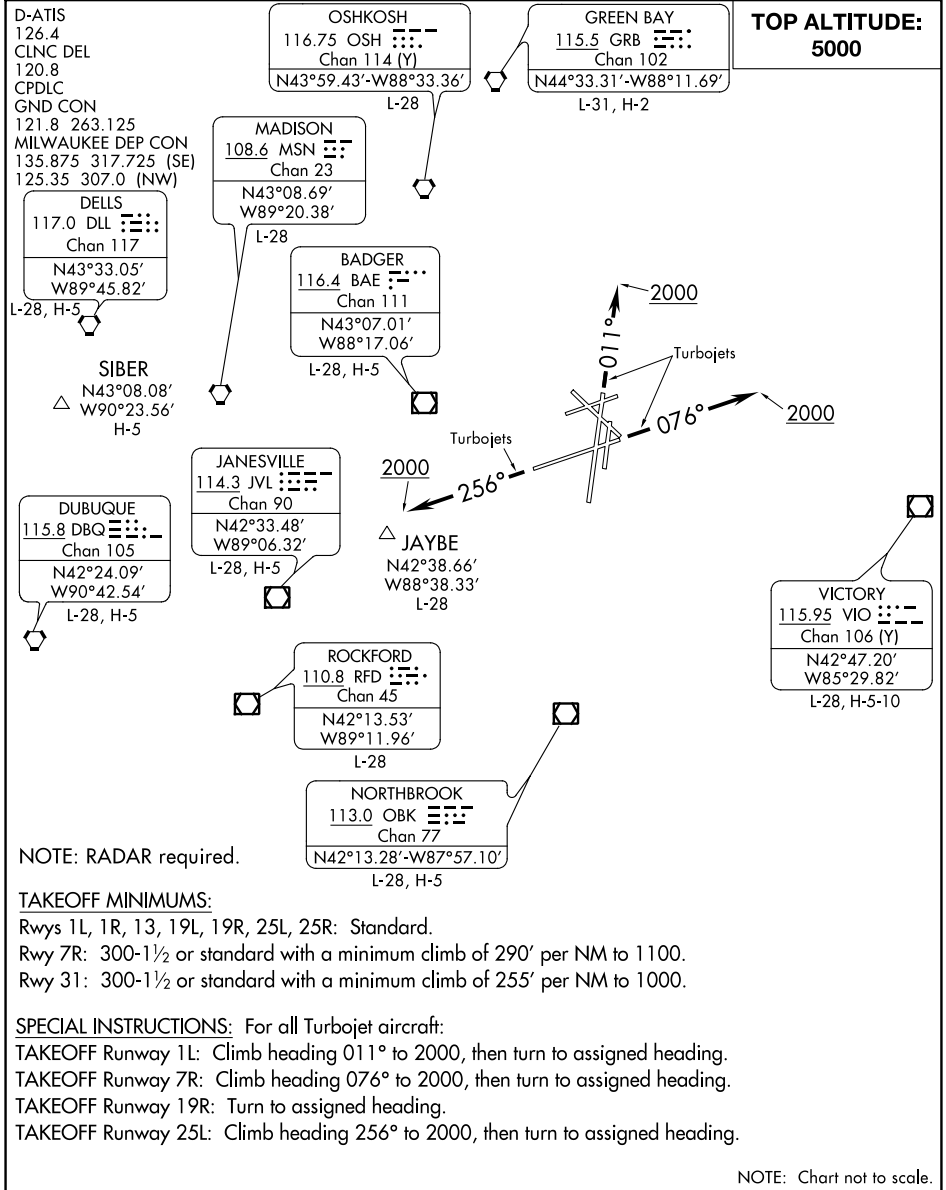


MITCHELL SIX DEPARTURE

AL-262 (FAA)

GENERAL MITCHELL INTL (MKE)
MILWAUKEE, WISCONSIN



EC-3, 31 DEC 2020 to 28 JAN 2021

EC-3, 31 DEC 2020 to 28 JAN 2021

DEPARTURE ROUTE DESCRIPTION

All aircraft expect RADAR vectors to join filed/assigned route. Maintain 5000 or assigned lower altitude. Expect clearance to requested altitude/flight level ten minutes after departure.

MITCHELL SIX DEPARTURE

19JUL18

MILWAUKEE, WISCONSIN
GENERAL MITCHELL INTL (MKE)