

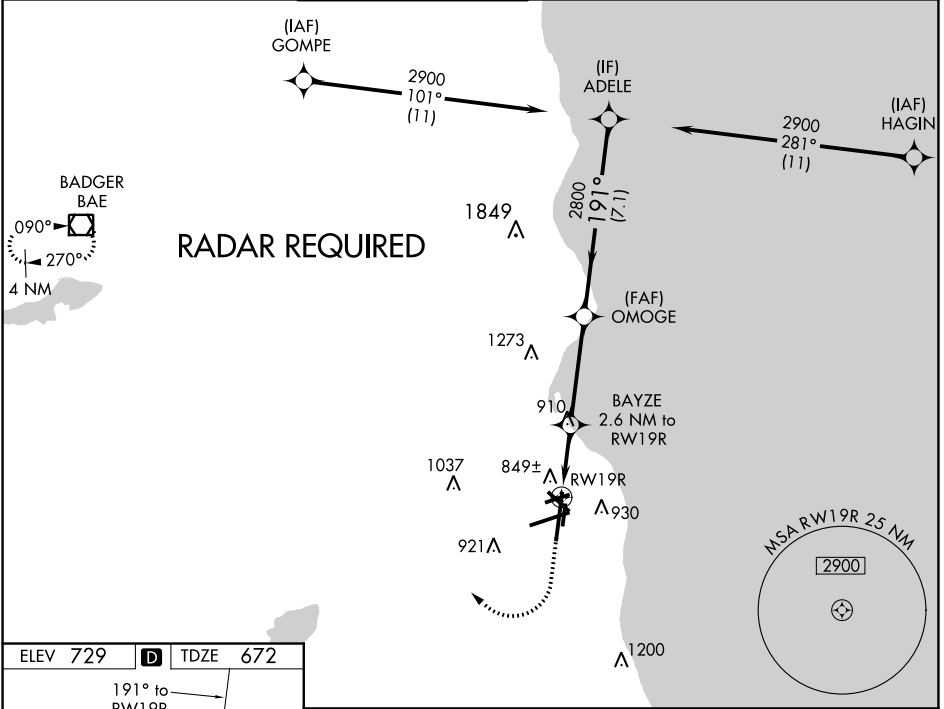
WAAS CH 99322 W19A	APP CRS 191°	Rwy Idg TDZE Apt Elev	9205 672 729
--	------------------------	-----------------------------	---

RNAV (GPS) RWY 19R

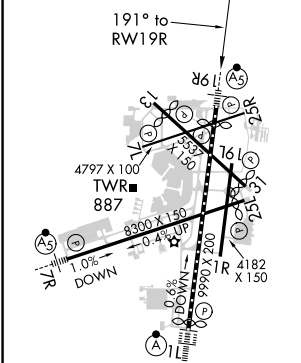
GENERAL MITCHELL INTL (MKE)

<p>▼ For uncompensated Baro-VNAV systems, LNAV/VNAV NA below -22°C (-7°F) or above 39°C (102°F). DME/DME RNP-0.3 NA. For inop MALS/R, increase LNAV/VNAV all Cats visibility to 1½ mile. ** RVR 1800 authorized with use of FD or AP or HUD to DA.</p>	<p>MALS/R </p>	<p>MISSED APPROACH: Climb to 2000 then climbing right turn to 2800 direct BAE VOR/DME and hold.</p>
--	--------------------	---

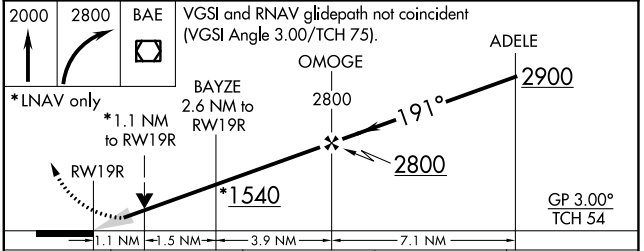
D-ATIS 126.4	MILWAUKEE APP CON 126.5 307.0	MILWAUKEE TOWER 124.575 269.05	GND CON 121.8 263.125	CLNC DEL 120.8	CPDLC
------------------------	---	--	---------------------------------	--------------------------	-------



ELEV 729	D	TDZE 672
----------	----------	----------



TDZ/CL Rwy 1L
REIL Rws 1R, 7L,
13, 25R, 25L and 31
HIRL Rws 1L-19R and 7R-25L
MIRL Rws 1R-19L, 13-31, and 7L-25R



CATEGORY	A	B	C	D
LPV DA **	872/24 200 (200-½)			
LNAV/VNAV DA	1031/40 359 (400-¾)			
LNAV MDA	1100/24	428 (400-½)	1100/40	428 (400-¾)
CIRCLING	1240-1	511 (600-1)	1240-1½ 511 (600-1½)	1360-2 631 (700-2)