

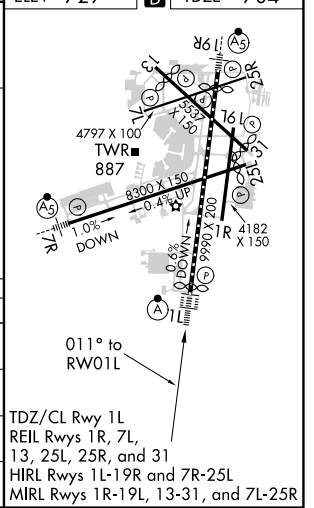
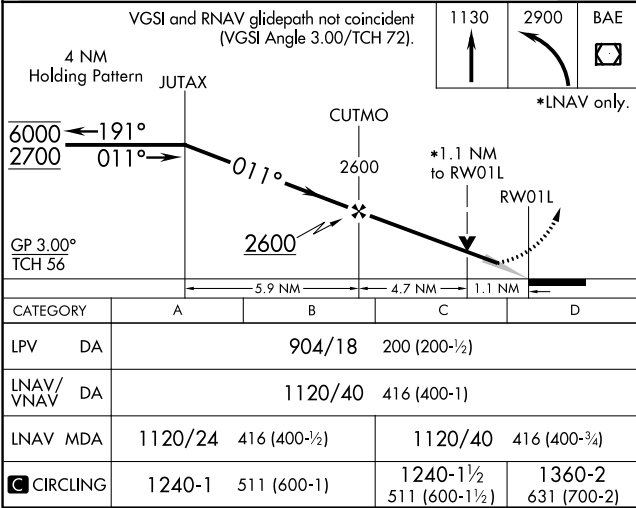
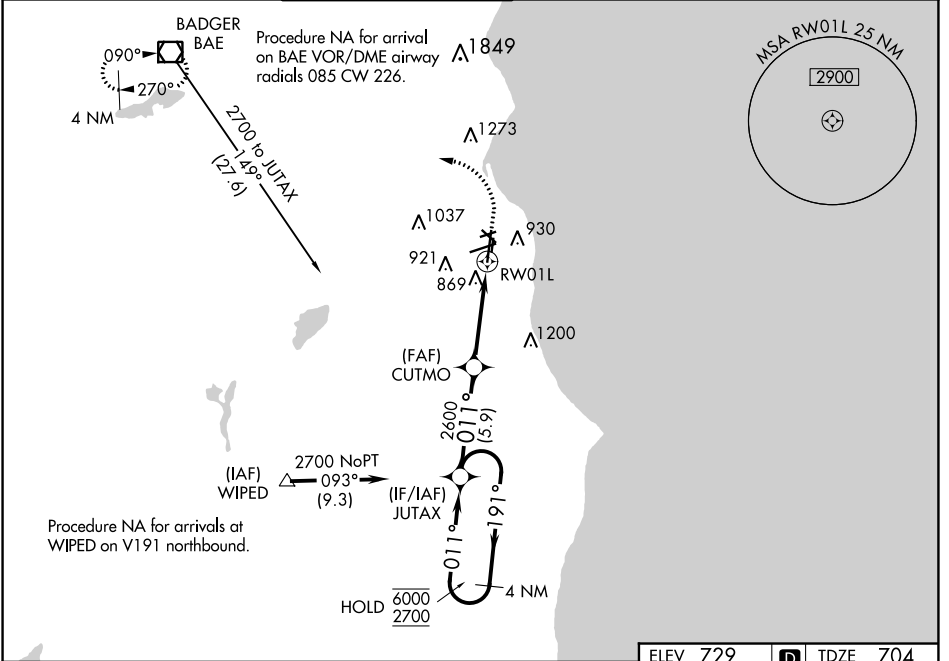
WAAS CH 45742 W01A	APP CRS 011°	Rwy Idg TDZE Apt Elev	9080 704 729
--	------------------------	-----------------------------	---

RNAV (GPS) RWY 1L

GENERAL MITCHELL INTL (MKE)

RNP APCH		ALSF-2	MISSED APPROACH: Climb to 1130 then climbing left turn to 2900 direct BAE VOR/DME and hold.
<p>▼ For uncompensated Baro-VNAV systems, LNAV/VNAV NA below -19°C (2°F) or above 54°C (130°F). For inop ALS increase LNAV/VNAV all Cats visibility to RVR 6000, increase LNAV Cat C/D visibility to RVR 6000.</p>			

D-ATIS 126.4	MILWAUKEE APP CON 126.5 307.0	MILWAUKEE TOWER 124.575 269.05	GND CON 121.8 263.125	CLNC DEL 120.8	CPDLC
------------------------	---	--	---------------------------------	--------------------------	-------



EC-3, 31 DEC 2020 to 28 JAN 2021

EC-3, 31 DEC 2020 to 28 JAN 2021