

WAAS CH <b>97442</b> <b>W01B</b>	APP CRS <b>011°</b>	Rwy Idg TDZE Apt Elev	<b>4182</b> <b>678</b> <b>729</b>
--	------------------------	-----------------------------	---

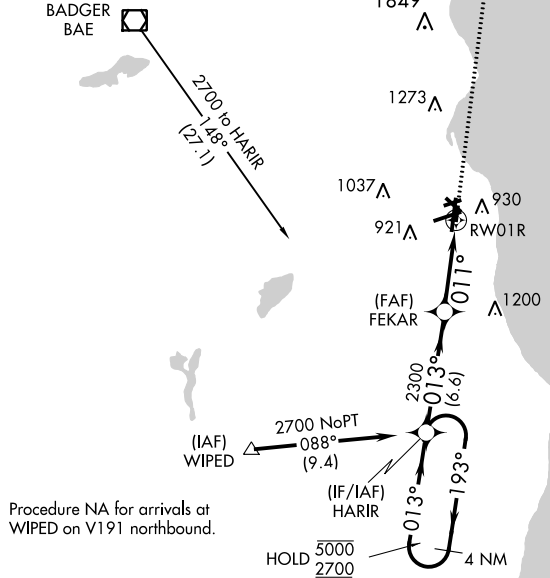
# RNAV (GPS) RWY 1R

GENERAL MITCHELL INTL (MKE)

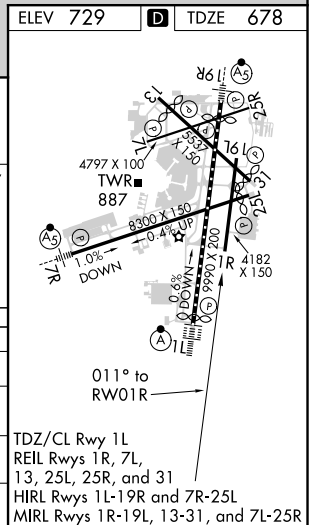
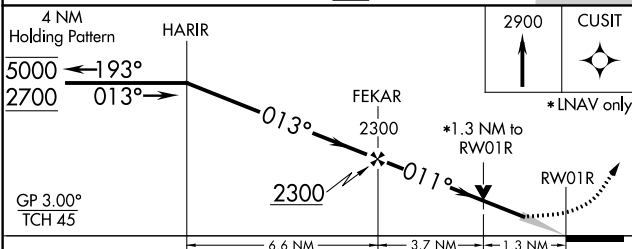
RNP APCH.		MISSED APPROACH: Climb to 2900 direct CUSIT and hold.		
For uncompensated Baro-VNAV systems, LNAV/VNAV NA below -20°C or above 54°C.				

D-ATIS <b>126.4</b>	MILWAUKEE APP CON <b>126.5 307.0</b>	MILWAUKEE TOWER <b>124.575 269.05</b>	GND CON <b>121.8 263.125</b>	CLNC DEL <b>120.8</b>	CPDLC
------------------------	---	--	---------------------------------	--------------------------	-------

Procedure NA for arrival on BAE VOR/DME airway radials 085 CW 226.



Procedure NA for arrivals at WIPED on V191 northbound.



CATEGORY	A	B	C	D
LPV DA	928-1	250 (200-1)		
LNAV/VNAV DA	1078-1½	400 (400-1½)		
LNAV MDA	1140-1 462 (500-1)	1140-1¾ 462 (500-1¾)		
CIRCLING	1240-1 511 (600-1)	1240-1½ 511 (600-1½)	1360-2 631 (700-2)	