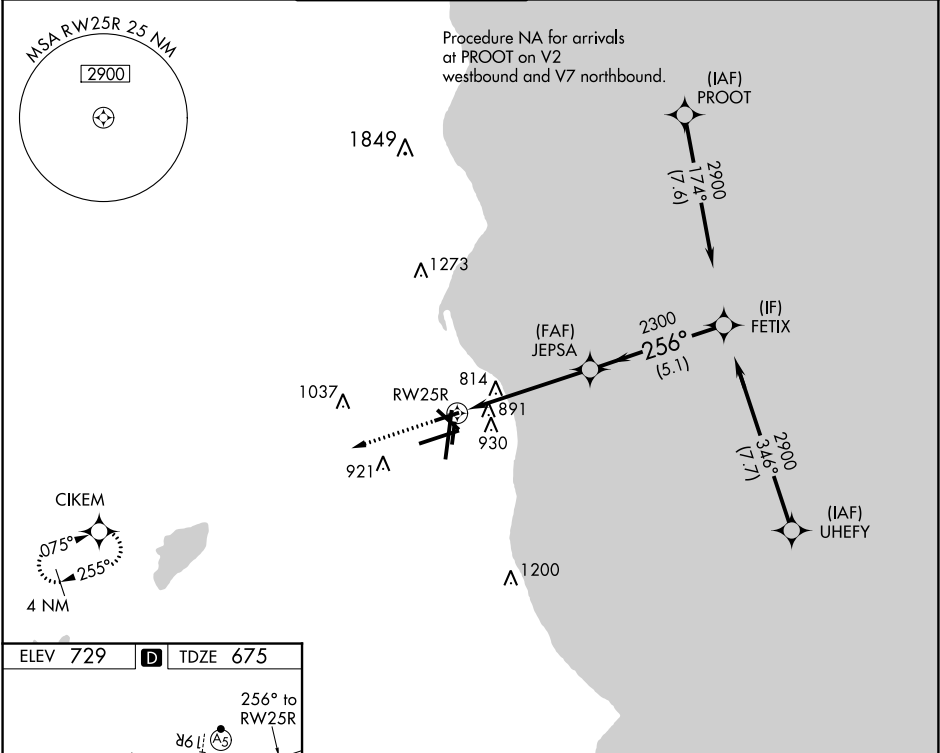


WAAS CH <b>77543</b> <b>W25B</b>	APP CRS <b>256°</b>	Rwy ldg TDZE Apt Elev <b>4797</b> <b>675</b> <b>729</b>
--	------------------------	--

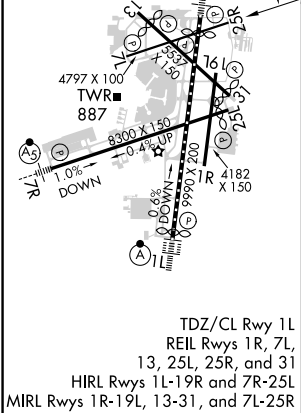
# RNAV (GPS) RWY 25R

GENERAL MITCHELL INTL (MKE)

RNP APCH. ▼ Rwy 25R helicopter visibility reduction below 3/4 SM NA.		MISSED APPROACH: Climb to 2900 direct CIKEM and hold.			
D-ATIS <b>126.4</b>	MILWAUKEE APP CON <b>126.5 307.0</b>	MILWAUKEE TOWER <b>124.575 269.05</b>	GND CON <b>121.8 263.125</b>	CLNC DEL <b>120.8</b>	CPDLC



ELEV 729	<b>D</b>	TDZE 675
----------	----------	----------



2900	CIKEM	FETIX	
1.1 NM to RW25R		JEPSA	2900
RW25R		2300	256°
1.1 NM		3.9 NM	5.1 NM
CATEGORY	A	B	C
LP MDA	1080-1	405 (400-1)	1080-1 1/8 405 (400-1 1/8)
LNAV MDA	1160-1	485 (500-1)	1160-1 3/8 485 (500-1 3/8)
<b>C</b> CIRCLING	1240-1	511 (600-1)	1240-1 1/2 511 (600-1 1/2) 1360-2 631 (700-2)

EC-3, 31 DEC 2020 to 28 JAN 2021

EC-3, 31 DEC 2020 to 28 JAN 2021