

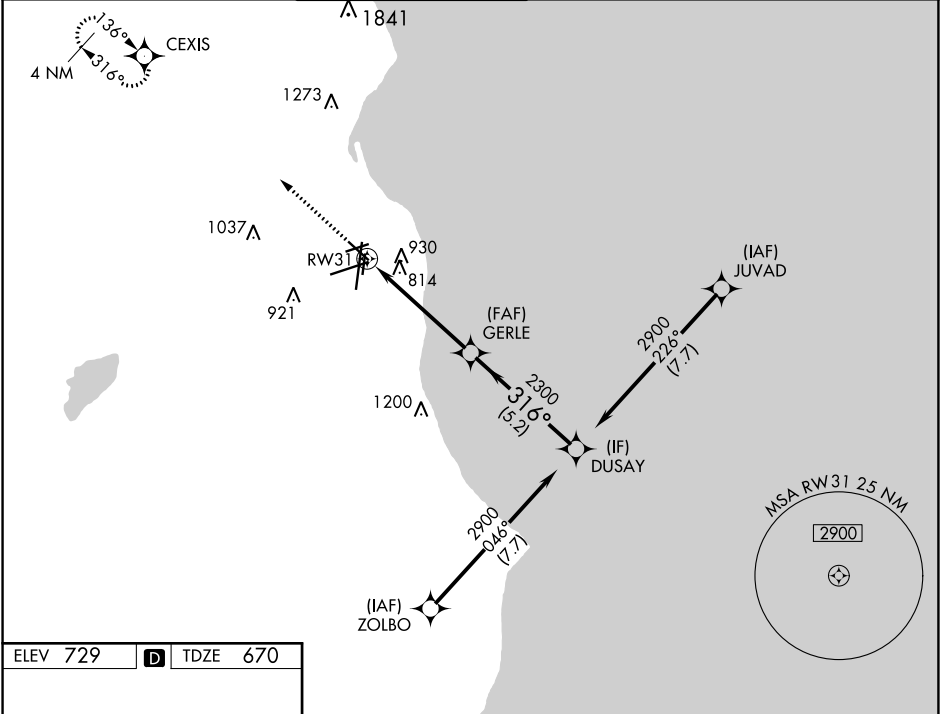
WAAS CH 48842 W31A	APP CRS 316°	Rwy ldg TDZE 670 Apt Elev 729	5152
--	------------------------	---	-------------

RNAV (GPS) RWY 31

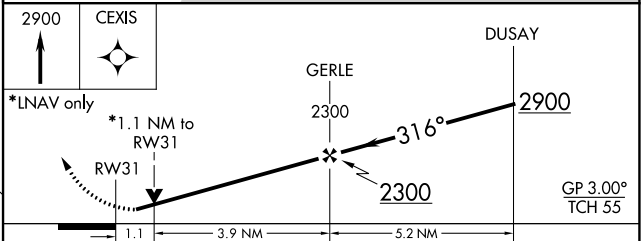
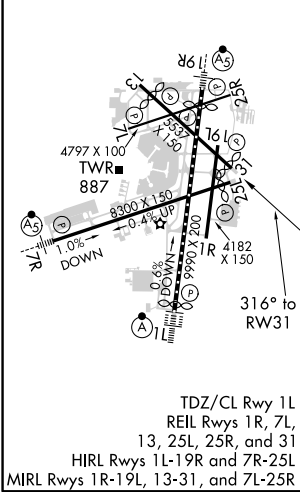
GENERAL MITCHELL INTL (MKE)

RNP APCH.		MISSED APPROACH: Climb to 2900 direct CEXIS and hold.	
▼ Rwy 31 helicopter visibility reduction below 3/4 SM NA. For uncompensated Baro-VNAV systems, LNAV/VNAV NA below -19°C or above 54°C.			

D-ATIS 126.4	MILWAUKEE APP CON 126.5 307.0	MILWAUKEE TOWER 124.575 269.05	GND CON 121.8 263.125	CLNC DEL 120.8	CPDLC
------------------------	---	--	---------------------------------	--------------------------	-------



ELEV 729	D	TDZE 670
----------	----------	----------



CATEGORY	A	B	C	D
LPV DA		948-7/8	278 (300-7/8)	
LNAV/VNAV DA		1092-1 1/4	422 (400-1 1/4)	
LNAV MDA	1080-1	410 (400-1)	1080-1 1/8	410 (400-1 1/8)
<input checked="" type="checkbox"/> CIRCLING	1240-1	511 (600-1)	1240-1 1/2 511 (600-1 1/2)	1360-2 631 (700-2)

EC-3, 31 DEC 2020 to 28 JAN 2021

EC-3, 31 DEC 2020 to 28 JAN 2021