

WAAS CH 62826 W25A	APP CRS 256°	Rwy Idg TDZE Apt Elev	7867 683 729
--	------------------------	-----------------------------	---

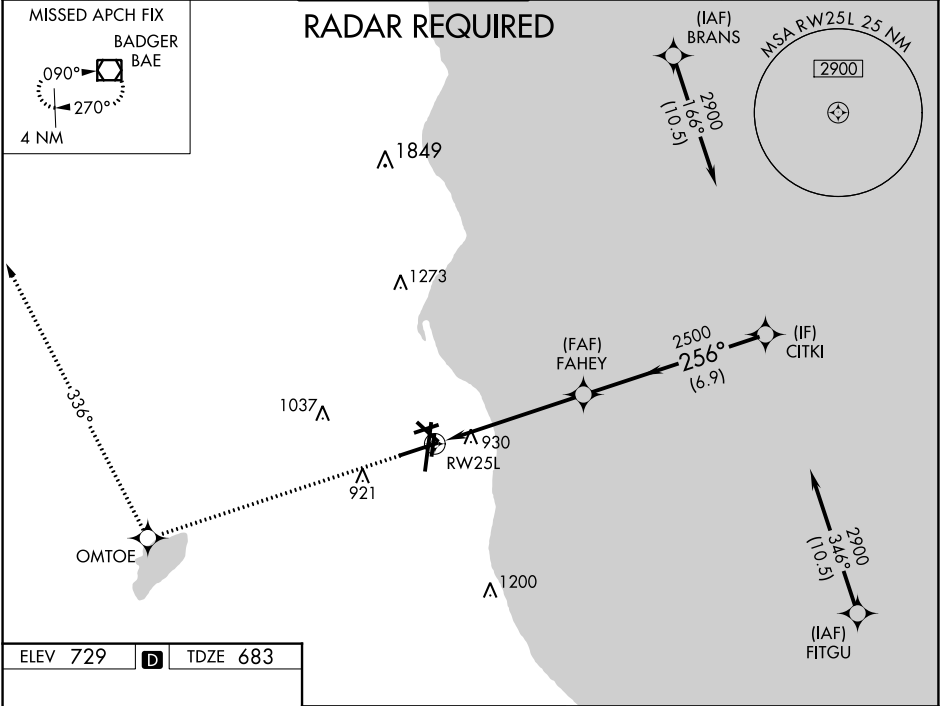
RNAV (GPS) Z RWY 25L

GENERAL MITCHELL INTL (MKE)

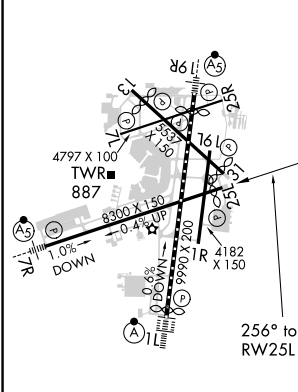
▼ For uncompensated Baro-VNAV systems, LNAV/VNAV NA below -20°C (-4°F) or above 54°C (130°F). DME/DME RNP-0.3 NA. Helicopter visibility reduction below ¾ SM NA.

MISSED APPROACH: Climb to 2900 direct OMTOE and on track 336° to BAE VOR/DME and hold.

D-ATIS 126.4	MILWAUKEE APP CON 126.5 307.0	MILWAUKEE TOWER 124.575 269.05	GND CON 121.8 263.125	CLNC DEL 120.8	CPDLC
------------------------	---	--	---------------------------------	--------------------------	-------



ELEV 729	D	TDZE 683
----------	----------	----------



TDZ/CL Rwy 1L
REIL Rws 1R, 7L,
13, 25R, 25L and 31
HIRL Rws 1L-19R and 7R-25L
MIRL Rws 1R-19L, 13-31 and 7L-25R

2900	OMTOE	tr 336°	BAE	* LNAV only	CITKI
		* 1.5 NM to RWY 25L	FAHEY 2500		2900
				256°	
				2500	
		1.5	4.1 NM	6.9 NM	
CATEGORY	A	B	C	D	
LPV DA		973-1	290 (300-1)		
LNAV/VNAV DA		1262-2	579 (600-2)		
LNAV MDA	1180-1	497 (500-1)	1180-1½	497 (500-1½)	
C CIRCLING	1240-1	511 (600-1)	1240-1½	511 (600-1½)	1360-2 631 (700-2)

GP 3.00°
TCH 47