

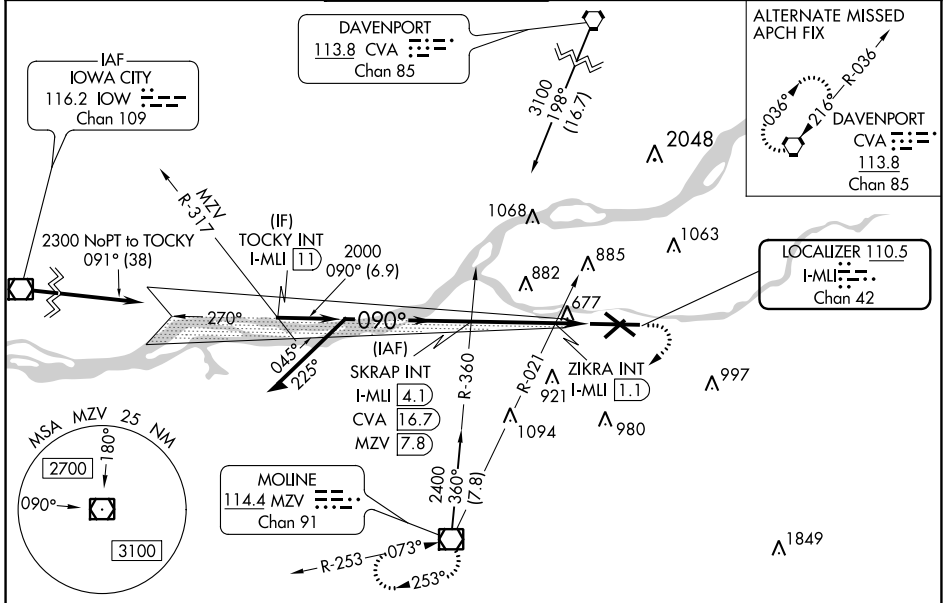
LOC/DME I-MLI <b>110.5</b> Chan <b>42</b>	APP CRS <b>090°</b>	Rwy Idg <b>10002</b> TDZE <b>587</b> Apt Elev <b>590</b>
---	------------------------	--

# ILS or LOC RWY 9

QUAD CITY INTL (MLI)

DME required for procedure entry at CVA VORTAC and MZV VOR/DME.		MALSR 	MISSED APPROACH: Climb to 1100 then climbing right turn to 2300 direct MZV VOR/DME and hold.
⚠ Circling to Rwy 5 NA at night. For inop ALS, increase S-LOC 9 Cats C and D visibility to 1 3/8 SM. ZIKRA Minimums: For inop ALS, increase S-LOC Cats C and D visibility to 1 SM. # RVR 1800 authorized with use of FD or AP or HUD to DA.			

ATIS <b>121.2</b>	QUAD CITY APP CON * <b>125.95 257.8</b>	QUAD CITY TOWER * <b>119.4(CTAF) 269.55</b>	GND CON <b>121.9</b>	CLNC DEL <b>124.05</b>	UNICOM <b>122.95</b>
----------------------	--	--	-------------------------	---------------------------	-------------------------



Remain within 10 NM	SKRAP INT I-MLI (4.1)	1100	2300	MZV	ELEV 590	TDZE 587
2400	270°	2000	090°	*LOC only	090° 4.3 NM from FAF 	
GS 3.00° TCH 50	2000	ZIKRA INT I-MLI (1.1)	*1040	3 NM	1.3	TWR 684 804 ±
CATEGORY	A	B	C	D		
S-ILS 9#	787/24 200 (200-1/2)					
S-LOC 9	1040/24	453 (500-1/2)	1040/50	453 (500-1)		
CIRCLING	1140-1 550 (600-1)	1160-1 570 (600-1)	1160-1 1/2 570 (600-1 1/2)	1260-2 670 (700-2)		
ZIKRA MINIMUMS (Dual VOR receivers or DME required)						
S-LOC 9	940/24	353 (400-1/2)	940/35	353 (400-3/4)	MIRL Rwy 5-23 REIL Rws 13 and 31 HIRL Rws 9-27 and 13-31 FAF to MAP 4.3 NM	
CIRCLING	1140-1 550 (600-1)	1160-1 570 (600-1)	1160-1 1/2 570 (600-1 1/2)	1260-2 670 (700-2)	Knots: 60 90 120 150 180 Min:Sec: 4:18 2:52 2:09 1:43 1:26	

EC-3, 31 DEC 2020 to 28 JAN 2021

EC-3, 31 DEC 2020 to 28 JAN 2021