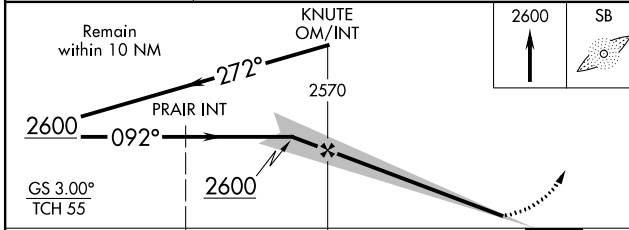
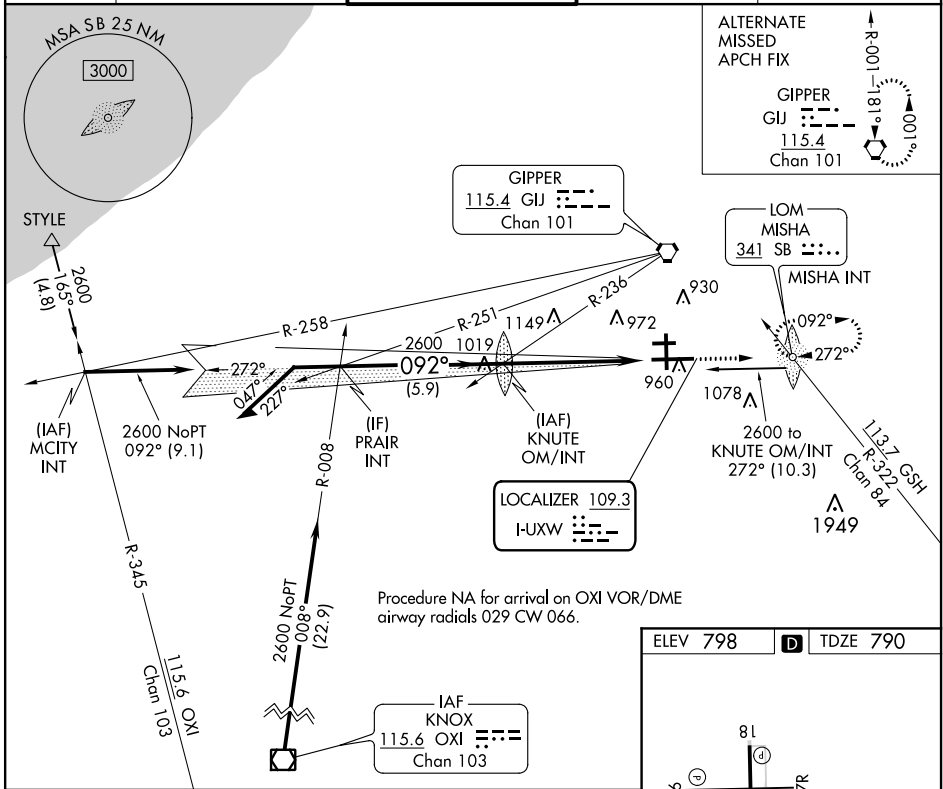


LOC I-UXW 109.3	APP CRS 092°	Rwy Idg TDZE Apt Elev	8412 790 798
---------------------------	------------------------	-----------------------------	-----------------------------------------

ILS or LOC RWY 9R

SOUTH BEND INTL (SBN)

ADF required.		MALSF	MISSED APPROACH: Climb to 2600 direct MISHA LOM/INT and hold.	
<p>▼ Rwy 9R helicopter visibility reduction below ¾ SM NA. ▲ Inop table does not apply to S-ILS 9R all Cats. For inop ALS, increase S-LOC 9R Cats C/D visibility to RVR 6000.</p>				
ATIS 120.675	SOUTH BEND APP CON* 118.55 257.8	SOUTH BEND TOWER* 135.675 (CTAF) 257.8	GND CON 121.7	CLNC DEL 121.9



ELEV 798	TDZE 790
----------	----------

81 16 4300 X 75 7101 X 27R 27R TWR 8412 X 150 0.5% DOWN 36 0.5% 0.5%

092° 5.3 NM from FAF

HIRL Rwy 9R-27L
MIRL Rwy 18-36
MIRL Rwy 9L-27R

FAF to MAP 5.3 NM

Knots	60	90	120	150	180
Min:Sec	5:18	3:32	2:39	2:07	1:46

CATEGORY	A	B	C	D
S-ILS 9R	990/40		200 (200-¾)	
S-LOC 9R	1200/40	410 (500-¾)	1200/50	410 (500-1)
CIRCLING	1280-1 482 (500-1)		1440-1¾ 642 (700-1¾)	1500-2¼ 702 (800-2¼)

EC-2, 31 DEC 2020 to 28 JAN 2021

EC-2, 31 DEC 2020 to 28 JAN 2021