

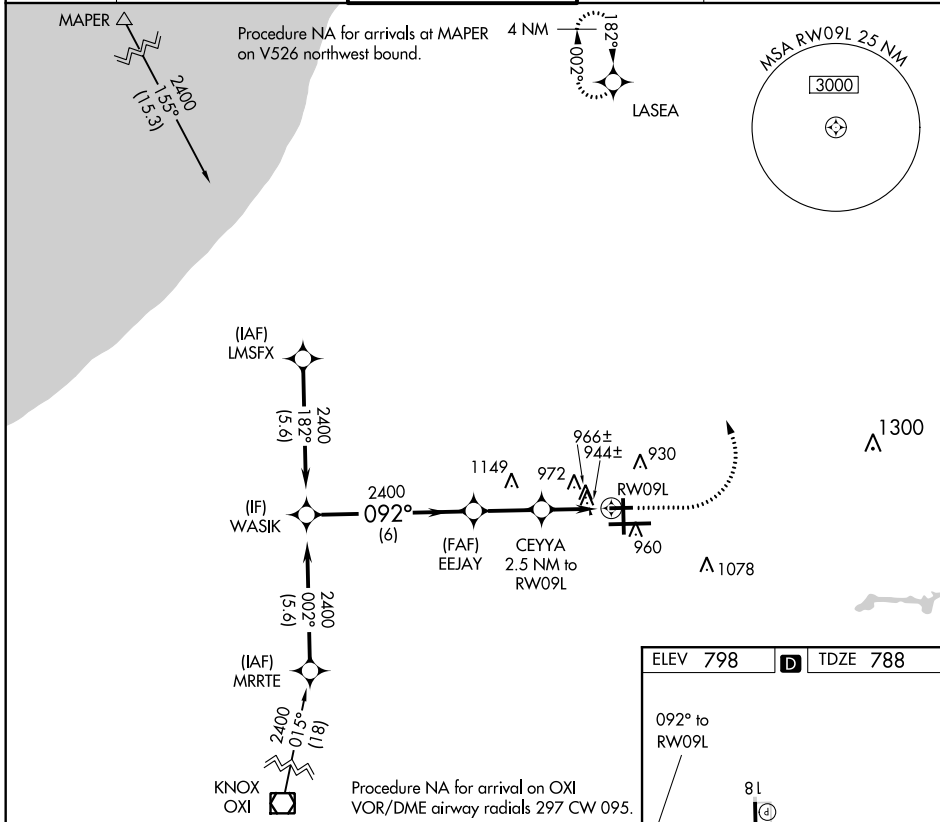
WAAS CH 70542 W09A	APP CRS 092°	Rwy Idg TDZE 788 Apt Elev 798	4300
--	------------------------	---	-------------

RNAV (GPS) RWY 9L

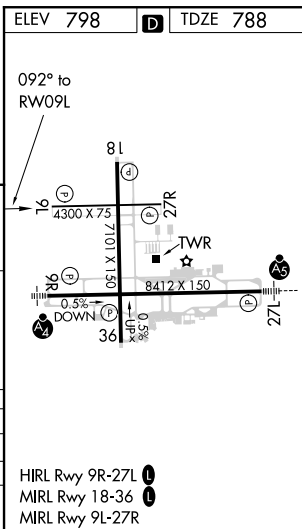
SOUTH BEND INTL (SBN)

RNP APCH.	MISSED APPROACH: Climb to 2000 then climbing left turn to 2400 direct LASEA and hold.
Rwy 9L helicopter visibility reduction below 3/4 SM NA.	

ATIS 120.675	SOUTH BEND APP CON* 118.55 257.8	SOUTH BEND TOWER* 135.675 (CTAF) 257.8	GND CON 121.7	CLNC DEL 121.9
------------------------	--	--	-------------------------	--------------------------



	WASIK	EEJAY	CEYYA 2.5 NM to RW09L	2000	2400	LASEA
	2400	092°	2400	1.2 NM to RW09L		
			1240			
		3.00°	TCH 40			
	6 NM	2.4 NM	1.3 NM	1.2 NM		
CATEGORY	A	B	C	D		
LP MDA	1200-1	412 (500-1)	1200-1 $\frac{1}{8}$	412 (500-1 $\frac{1}{8}$)		
LNAV MDA	1220-1	432 (500-1)	1220-1 $\frac{1}{4}$	432 (500-1 $\frac{1}{4}$)		
CIRCLING	1280-1	482 (500-1)	1440-1 $\frac{3}{4}$	1500-2 $\frac{1}{4}$		
			642 (700-1 $\frac{3}{4}$)	702 (800-2 $\frac{1}{4}$)		



EC-2, 31 DEC 2020 to 28 JAN 2021

EC-2, 31 DEC 2020 to 28 JAN 2021