

EDWARDS, CALIFORNIA

# HI-ILS or LOC/DME Z RWY 23L

LOC I-EDW <b>110.1</b>	APCH CRS <b>226°</b>	Rwy ldg TDZE Arprt Elev <b>15,024</b> <b>2286</b> <b>2311</b>
---------------------------	-------------------------	--

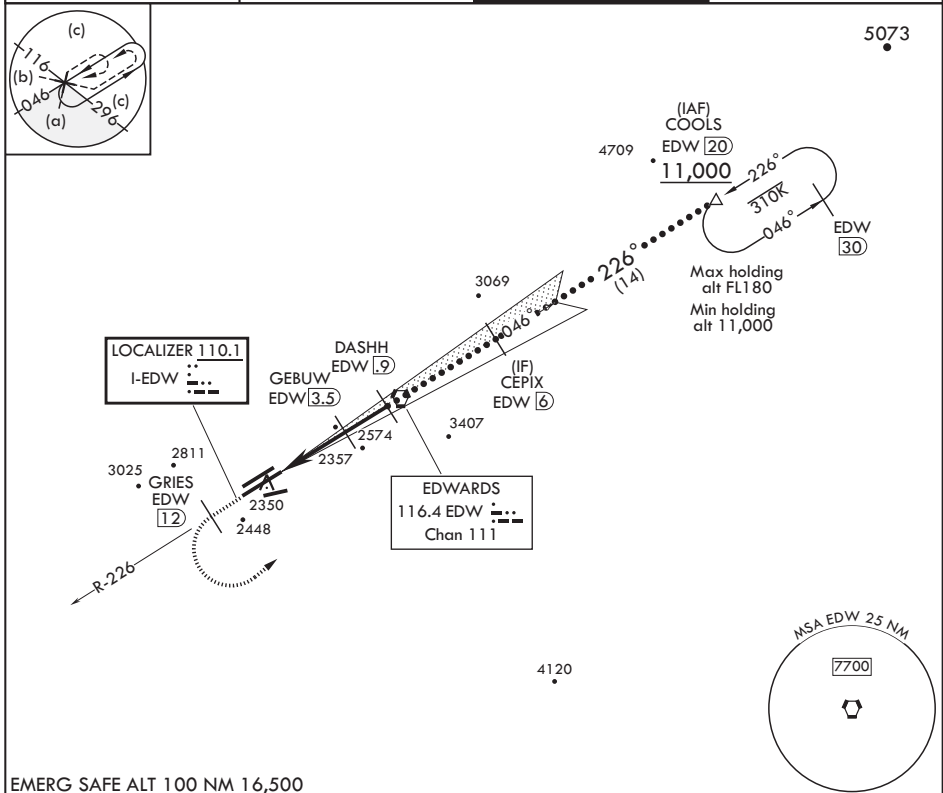
JAL-500 (USAF)

EDWARDS AFB (KEDW)

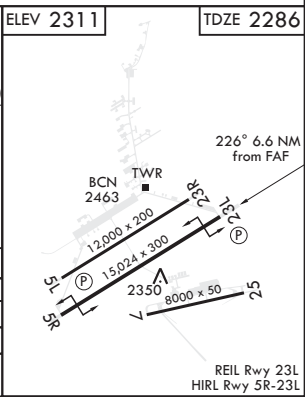
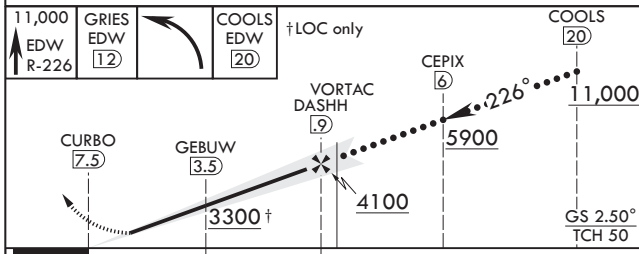
**V** \* Circling not authorized NW of Rwy 5L-23R. Circling not authorized at night to Rwy 5L-23R.

MISSED APPROACH: Climb to 11,000. Track EDW VORTAC R-226 outbound to GRIES, then turn left direct COOLS and hold. Missed Approach requires use of RNAV or ATC RADAR monitoring.

ATIS* <b>127.425 269.9</b>	SPORT APP CON/DEP CON <b>132.75 343.7</b>	TOWER* <b>120.7 (CTAF) 318.1 (CTAF)</b>	GND CON <b>121.8 225.4</b>
-------------------------------	--	--	-------------------------------



EMERG SAFE ALT 100 NM 16,500



CATEGORY	C	D	E
S-ILS 23L	2486-3/4	200	(200-3/4)
S-LOC 23L	2540-3/4	254	(300-3/4)
<b>C</b> CIRCLING*	2880-1 1/2 569 (600-1 1/2)	2880-2	569 (600-2)

EDWARDS, CALIFORNIA

34°55'N - 117°53'W

EDWARDS AFB (KEDW)

Amdt 1 30JAN20

# HI-ILS or LOC/DME Z RWY 23L

SW-3, 31 DEC 2020 to 28 JAN 2021

SW-3, 31 DEC 2020 to 28 JAN 2021