

EDWARDS, CALIFORNIA

# HI-TACAN Z RWY 23L

VORTAC EDW 116.4 Chan 111	APCH CRS 226°	Rwy ldg 15,024	TDZE 2286
		Arprt Elev 2311	

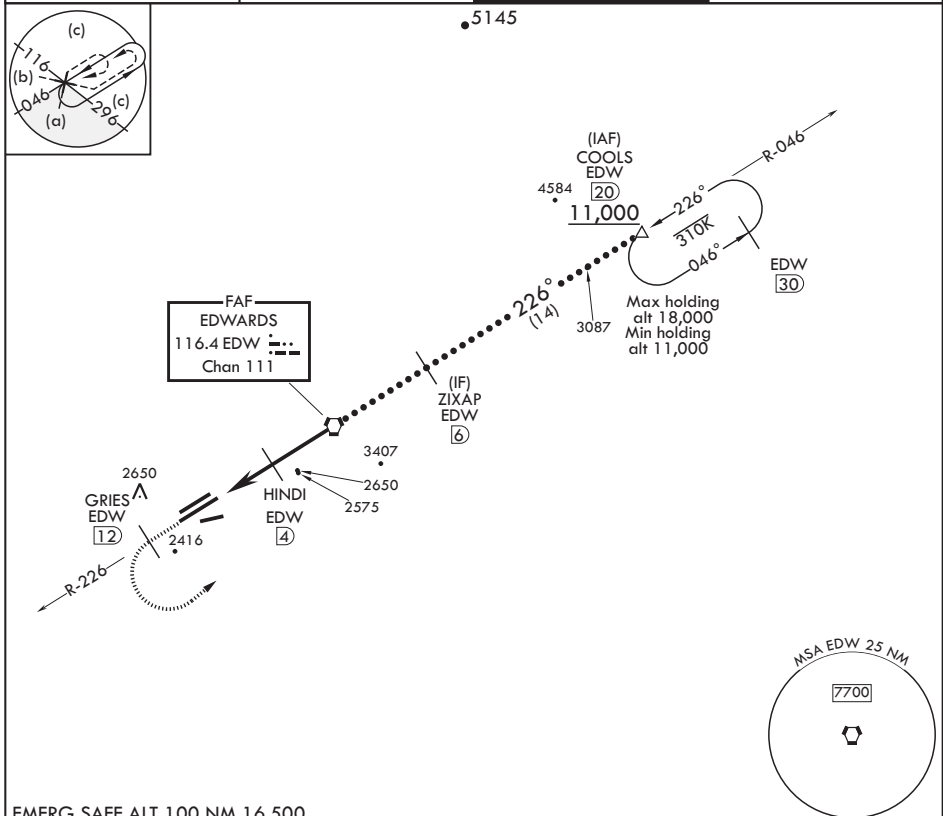
JAL-500 (USAF)

EDWARDS AFB (KEDW)

**⚠** \* Circling NA NW of Rwy 5L-23R. Circling not authorized at night to Rwy 5L-23R.

MISSED APPROACH: Climb to 11,000. Track EDW VORTAC R-226 outbound to GRIES, then turn left direct COOLS and hold. Missed approach requires use of RNAV or ATC radar monitoring.

ATIS* 127.425 269.9	SPORT APP CON/DEP CON 132.75 343.7	TOWER* 120.7 (CTAF) 318.1 (CTAF)	GND CON 121.8 225.4
------------------------	---------------------------------------	-------------------------------------	------------------------



EMERG SAFE ALT 100 NM 16,500

11,000 EDW R-226	GRIES EDW (12)	COOLS EDW (20)	VGSI and descent angles not coincident (VGSI Angle 3.00/TCH 49).	COOLS (20)	ELEV 2311	TDZE 2286
			ZIXAP (6)	11,000		
CATEGORY	C	D	E			
S-23L	2640-1	354	(400-1)			
CIRCLING*	2880-1 1/2 569 (600-1 1/2)	2880-2	569 (600-2)			

EDWARDS, CALIFORNIA

34°55'N - 117°53'W

EDWARDS AFB (KEDW)

Amdt 1 30JAN20

# HI-TACAN Z RWY 23L

SW-3, 31 DEC 2020 to 28 JAN 2021

SW-3, 31 DEC 2020 to 28 JAN 2021