

EDWARDS, CALIFORNIA

HI-TACAN Z RWY 5R

VORTAC EDW 116.4 Chan 111	APCH CRS 046°	Rwy Idg 15,024 TDZE 2303 Arprt Elev 2311
---	-------------------------	---

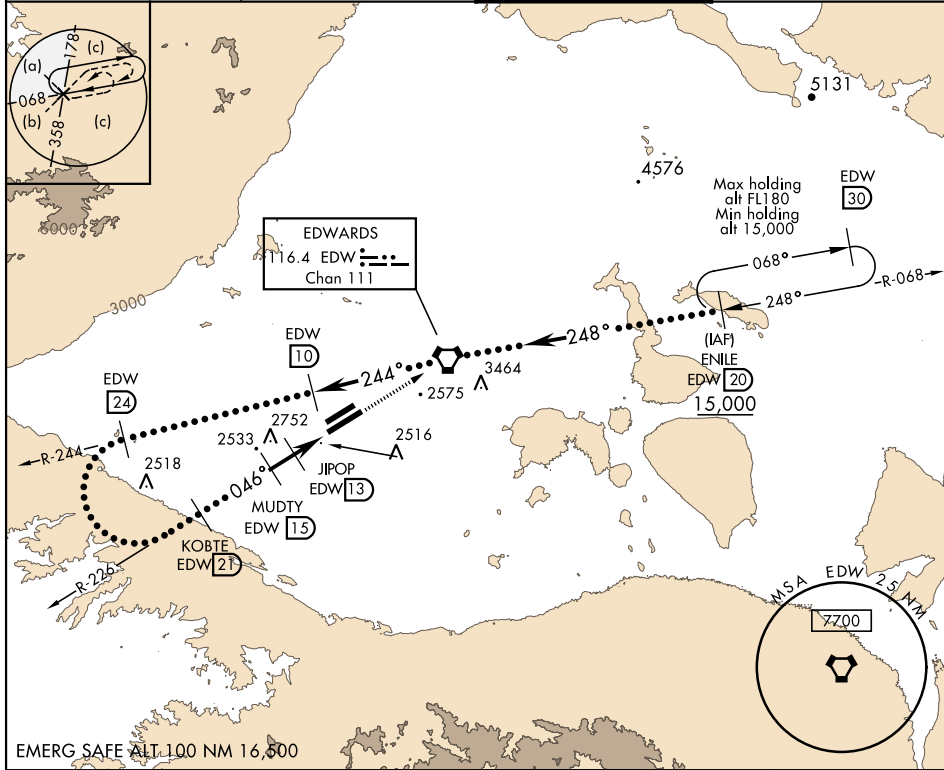
JAL-500 [USAF]

EDWARDS AFB (KEDW)

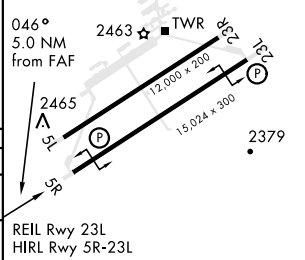
▼ * Circling not authorized NW of Rwy 5L-23R.
 Circling not authorized at night to Rwy 5L-23R.

MISSED APPROACH: Track EDW VORTAC R-226 to EDW.
 Intercept EDW R-068 to ENILE and hold. Maintain 15,000.
 Missed approach requires use of RNAV or ATC RADAR monitoring.

ATIS ★ 127.425 269.9	SPORT APP CON 132.75 343.7	TOWER ★ 120.7 (CTAF) 318.1 (CTAF)	GND CON 121.8 225.4
--------------------------------	--------------------------------------	---	-------------------------------



EMERG SAFE ALT 100 NM 16,500		Remain within 28 NM		ELEV 2311	TDZE 2303
		15,000	EDW		
CATEGORY	C	D	E		
S-5R	2820-1½	517	(600-1½)		
CIRCLING*	2880-1½ 569 (600-1½)	2880-2	569 (600-2)		



EDWARDS, CALIFORNIA

34°55'N-117°53'W

EDWARDS AFB (KEDW)

Amdt 1 30JAN20

HI-TACAN Z RWY 5R

SW-3, 31 DEC 2020 to 28 JAN 2021

SW-3, 31 DEC 2020 to 28 JAN 2021