

EDWARDS, CALIFORNIA

ILS or LOC/DME Y RWY 23L

LOC I-EDW 110.1	APCH CRS 226°	Rwy Idg 15,024 TDZE 2286 Arpt Elev 2311
---------------------------	-------------------------	--------------------------------------------------------------------

AL-500 [USAF]

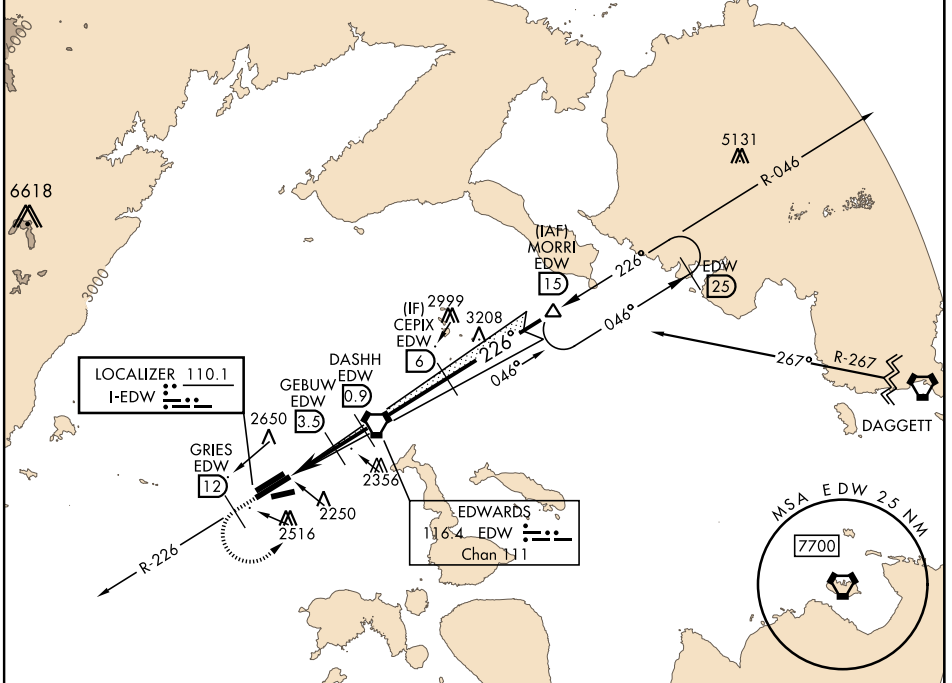
EDWARDS AFB (KEDW)

∇ *Circling not authorized NW of Rwy 5L-23R.
Circling not authorized at night to Rwy 5L-23R.

† MISSED APPROACH: Climb to 7400. Track EDW R-226 outbound to GRIES, then turn left direct MORRI and hold.

ATIS * 127.425 269.9	SPORT APP CON 132.75	TOWER * 120.7 (CTAF) 318.1 (CTAF)	GND CON 121.8 225.4
--------------------------------	--------------------------------	---------------------------------------------	-------------------------------

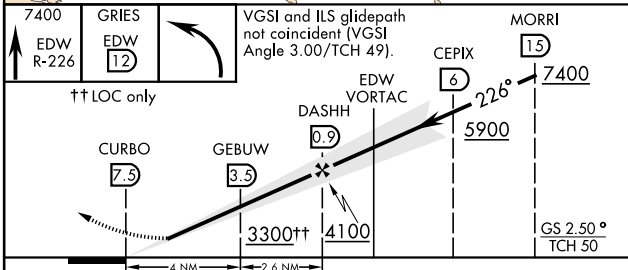
† Missed approach requires use of RNAV or ATC RADAR monitoring.



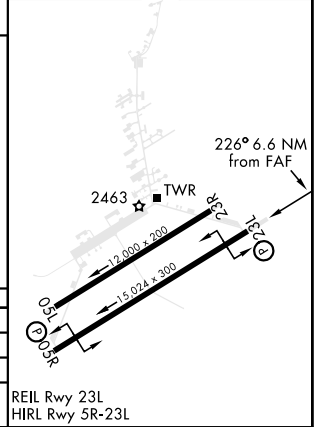
SW-3, 31 DEC 2020 to 28 JAN 2021

SW-3, 31 DEC 2020 to 28 JAN 2021

EMERG SAFE ALT 100 NM 16,500



ELEV 2311	TDZE 2286
-----------	-----------



CATEGORY	A	B	C	D	E
S-ILS 23L		2486- ³ / ₄	200	(200- ³ / ₄)	
S-LOC 23L		2540-1	254	(300-1)	
CIRCLING*	2880-1	569 (600-1)	2880-1 ¹ / ₂ 569 (600-1 ¹ / ₂)	2880-2	569 (600-2)

REIL Rwy 23L
HIRL Rwy 5R-23L

EDWARDS, CALIFORNIA

34° 55'N - 117° 53'E

EDWARDS AFB (KEDW)

Amtd 2 23APR20

ILS or LOC/DME Y RWY 23L