

EDWARDS, CALIFORNIA

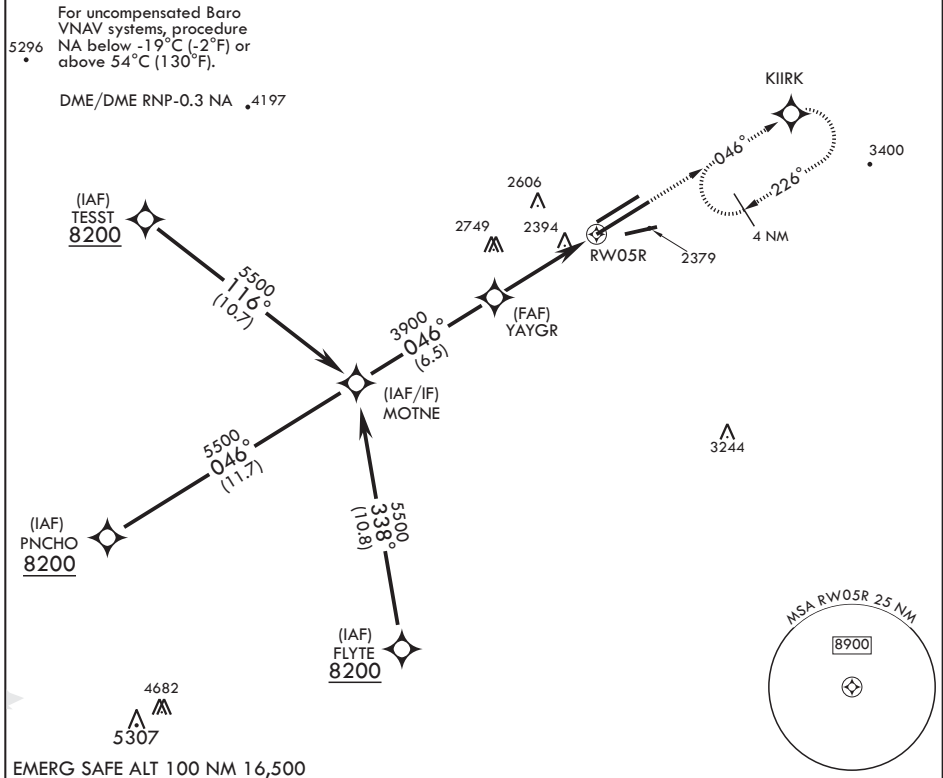
# RNAV (GPS) RWY 5R

APCH CRS <b>046°</b>	Rwy Idg <b>15,024</b>
	TDZE <b>2303</b>
	Arprt Elev <b>2311</b>

AL-500 (USAF)

EDWARDS AFB (KEDW)

<p><b>⚠</b> * Circling not authorized NW of Rwy 5L-23R.</p>		<p>MISSED APPROACH: Climb to 5700 direct KIIRK and hold, continue climb-in-hold to 5700.</p>	
<p>ATIS* <b>127.425 269.9</b></p>	<p>SPORT APP CON/DEP CON <b>132.75 343.7</b></p>	<p>TOWER* <b>120.7 (CTAF) 318.1 (CTAF)</b></p>	<p>GND CON <b>121.8 225.4</b></p>



EMERG SAFE ALT 100 NM 16,500

MOTNE	VGSI and descent angles not coincident.				5700	KIIRK	ELEV 2311	TDZE 2303
5500	046°				YAYGR	↑ LNAV only	2680	
					3900	↑ 1.5 NM to RWY 5R		
						4.8 NM		
CATEGORY	A	B	C	D	E			
LNAV/VNAV DA	2820-1 3/8		517	(600-1 3/8)				
LNAV MDA	2820-1 517 (600-1)		2820-1 3/8 517 (600-1 3/8)					
<b>C</b> CIRCLING*	2880-1 569 (600-1)		2880-1 1/2 569 (600-1 1/2)		2880-2 569 (600-2)			

EDWARDS, CALIFORNIA  
Amdt 1 30JAN20

34°55'N - 117°53'W

EDWARDS AFB (KEDW)

# RNAV (GPS) RWY 5R

SW-3, 31 DEC 2020 to 28 JAN 2021

SW-3, 31 DEC 2020 to 28 JAN 2021

