

EDWARDS, CALIFORNIA

VOR/DME or TACAN RWY 23R

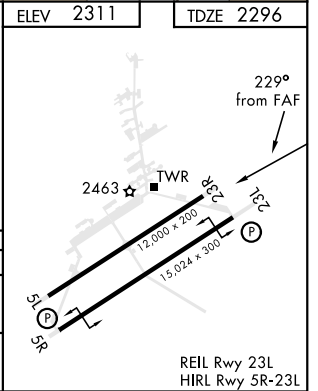
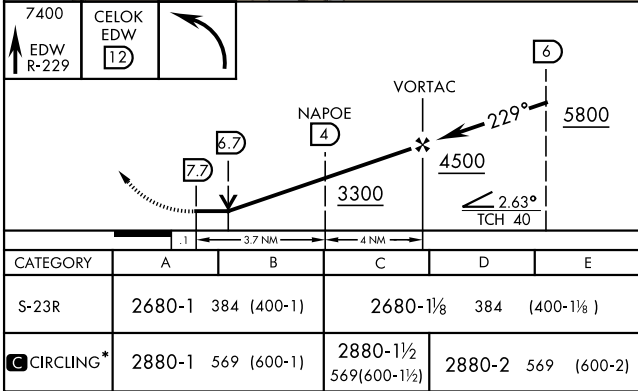
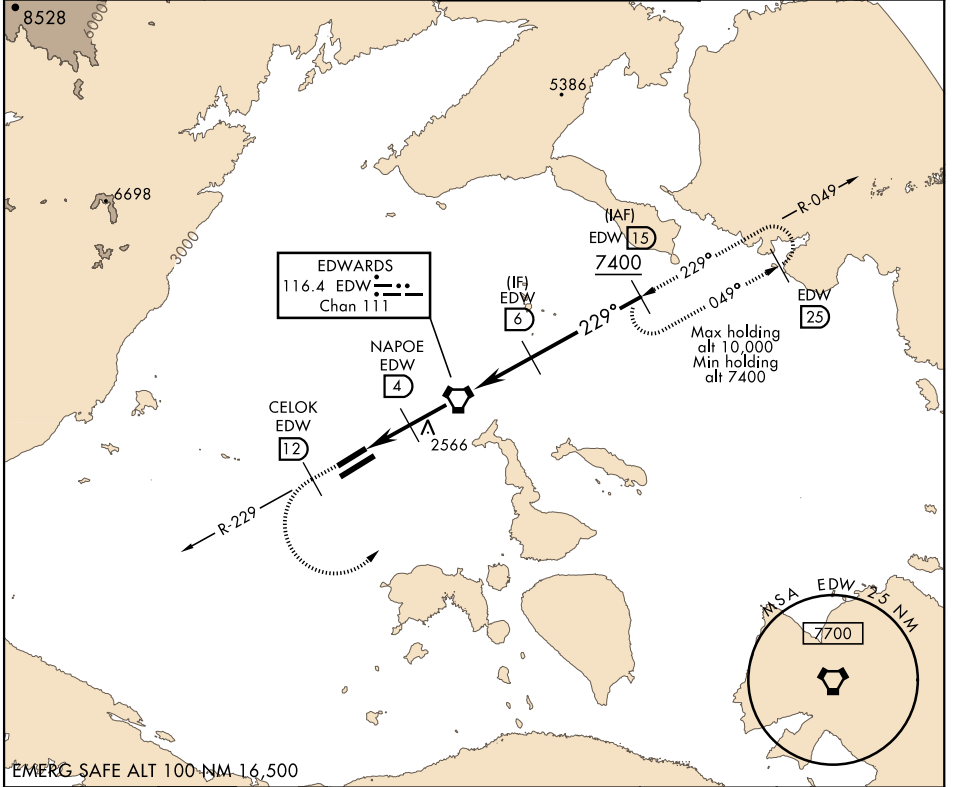
VORTAC EDW 116.4 Chan 111	APCH CRS 229°	Rwy Idg TDZE Arprt Elev 12,000 2296 2311
--	-------------------------	--

AL-500 [USAF]

EDWARDS AFB (KEDW)

▽ * Circling not authorized NW of Rwy 5L-23R.
 Circling not authorized at night to Rwy 5L-23R.
MISSED APPROACH: Track EDW VORTAC R-229 outbound to CELOK, then turn left to EDW R-049/15 DME and hold. Maintain 7400. Missed approach requires use of RNAV or ATC RADAR monitoring.

ATIS ★ 127.425 269.9	SPORT APP CON 132.75 343.7	TOWER★ 120.7 (CTAF) 318.1 (CTAF)	GND CON 121.8 225.4
--------------------------------	--------------------------------------	--	-------------------------------



EDWARDS, CALIFORNIA

34°55'N-117°53'W

EDWARDS AFB (KEDW)

Admt 1 30JAN20

VOR/DME or TACAN RWY 23R

SW-3, 31 DEC 2020 to 28 JAN 2021

SW-3, 31 DEC 2020 to 28 JAN 2021

REIL Rwy 23L
HIRL Rwy 5R-23L