

EDWARDS, CALIFORNIA

# VOR/DME or TACAN Y RWY 23L

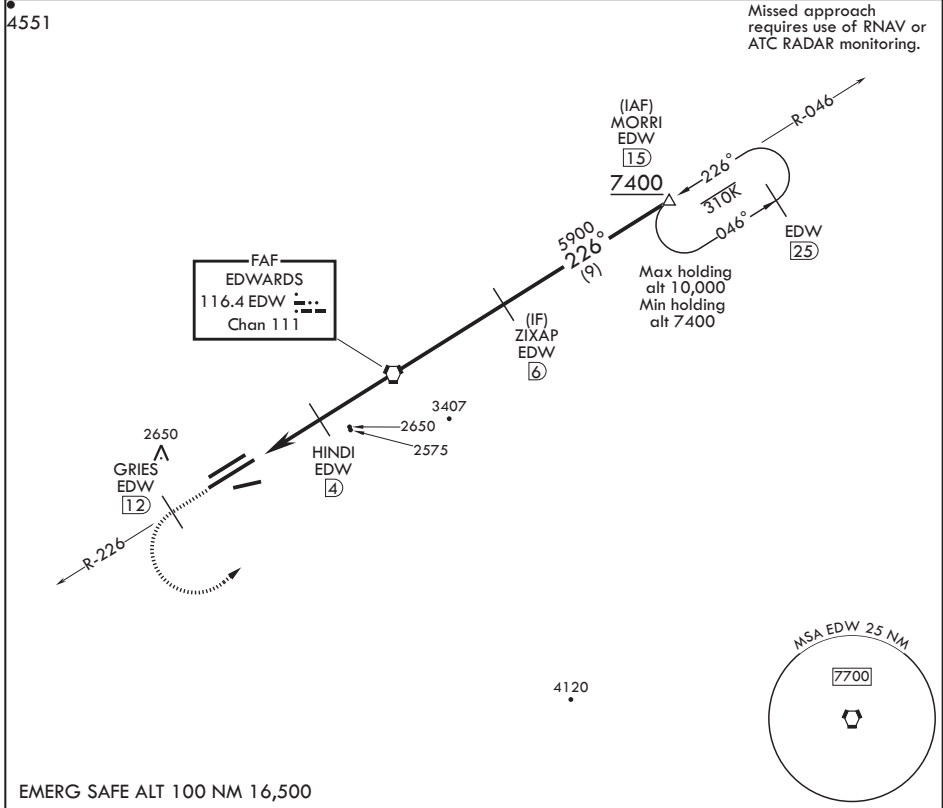
VORTAC EDW 116.4 Chan 111	APCH CRS 226°	Rwy ldg TDZE 15,024 2286 Arprt Elev 2311
---------------------------------	------------------	--

AL-500 (USAF)

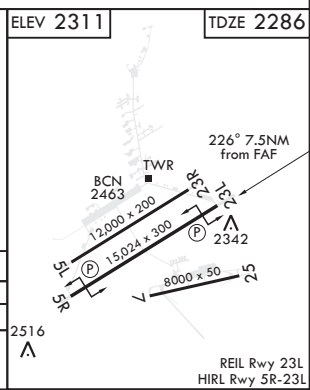
EDWARDS AFB (KEDW)

**⚠** \* Circling not authorized NW of Rwy 5L-23R. Circling not authorized at night to Rwy 5L-23R. MISSED APPROACH: Climb to 7400. Track EDW VORTAC R-226 outbound to GRIES, then turn left direct MORRI and hold.

ATIS* 127.425 269.9	SPORT APP CON/DEP CON 132.75 343.7	TOWER* 120.7 (CTAF) 318.1 (CTAF)	GND CON 121.8 225.4
------------------------	---------------------------------------	-------------------------------------	------------------------



7400 EDW R-226	GRIES EDW (12)	MORRI EDW (15)	ZIXAP (6)	MORRI (15)
VGSJ and descent angles not coincident (VGSJ Angle 3.00/TCH 49).				
HUBNO (7)	HINDI (4)	VORTAC	5900	7400
3300		4500	≤ 2.71° TCH 49	
CATEGORY				
S-23L	A	B	C	D E
	2640-1		354	(400-1)
<b>C</b> CIRCLING*	2880-1 569 (600-1)		2880-1½ 569 (600-1½)	2880-2 569 (600-2)



EDWARDS, CALIFORNIA 34°55'N - 117°53'W EDWARDS AFB (KEDW)

Amdt 2 23APR20

# VOR/DME or TACAN Y RWY 23L

SW-3, 31 DEC 2020 to 28 JAN 2021

SW-3, 31 DEC 2020 to 28 JAN 2021