

VOR/DME or TACAN Y RWY 5R

AL-500 [USAF]

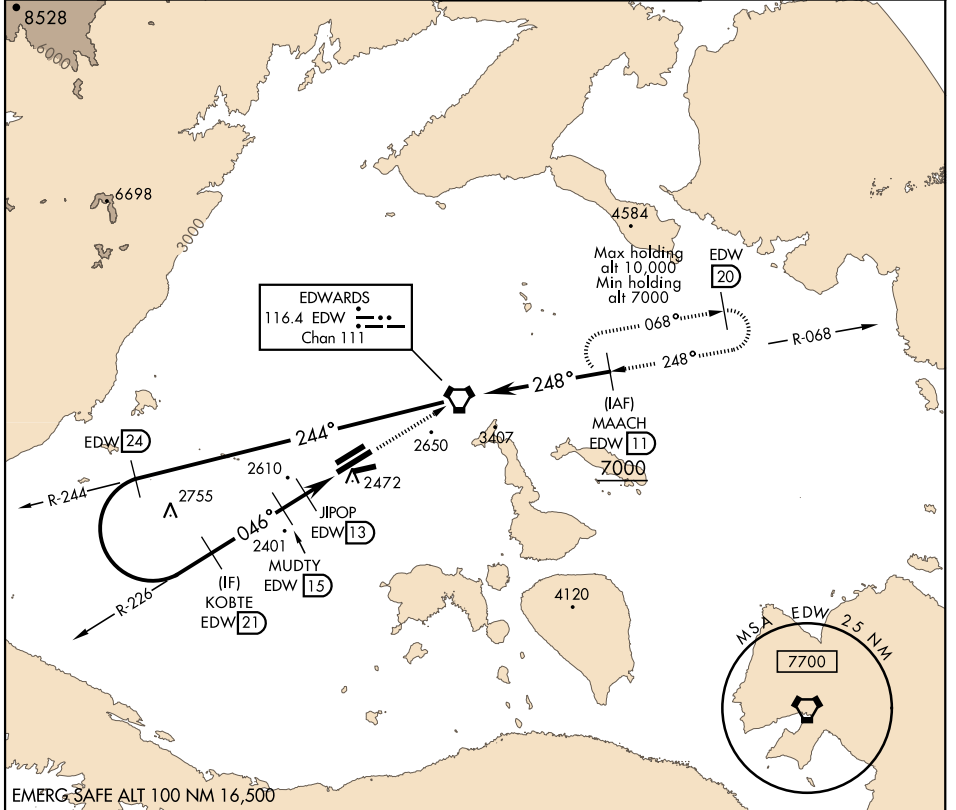
EDWARDS AFB (KEDW)

VORTAC EDW 116.4 Chan 111	APCH CRS 046°	Rwy Idg 15,024 TDZE 2303 Arprt Elev 2311
---	-------------------------	---

▼ *Circling not authorized NW of Rwy 5L-23R.
Circling not authorized at night to Rwy 5L-23R.

MISSED APPROACH: Track EDW VORTAC R-226 to EDW.
Intercept EDW R-068 to MAACH and hold. Maintain 7000.
Missed approach requires use of RNAV or ATC radar monitoring.

ATIS ★ 127.425 269.9	SPORT APP CON 132.75 343.7	TOWER ★ 120.7 (CTAF) 318.1 (CTAF)	GND CON 121.8 225.4
--------------------------------	--------------------------------------	---	-------------------------------



EMERG SAFE ALT 100 NM 16,500

	VORTAC		7000	EDW	ELEV 2311	TDZE 2303	
	R-244 (24) 5700 R-226 (21) 5300 R-046 (15) 3900 R-068 (20) 248°		2.92° TCH 47 2 NM 3 NM	2650 2472 2401 2755 2610	EDW R-226 EDW VORTAC	7000 EDW R-226	ELEV 2311 TDZE 2303
Remain within 26 NM							
CATEGORY	A	B	C	D	E		
S-5R	2820-1 517 (600-1)		2820-1½ 517	(600-1½)			
CIRCLING*	2880-1 569 (600-1)		2880-1½ 569 (600-1½)	2880-2 569 (600-2)			

VOR/DME or TACAN Y RWY 5R

SW-3, 31 DEC 2020 to 28 JAN 2021

SW-3, 31 DEC 2020 to 28 JAN 2021

REIL Rwy 23L
HIRL Rwy 5R-23L