

PEORIA, ILLINOIS

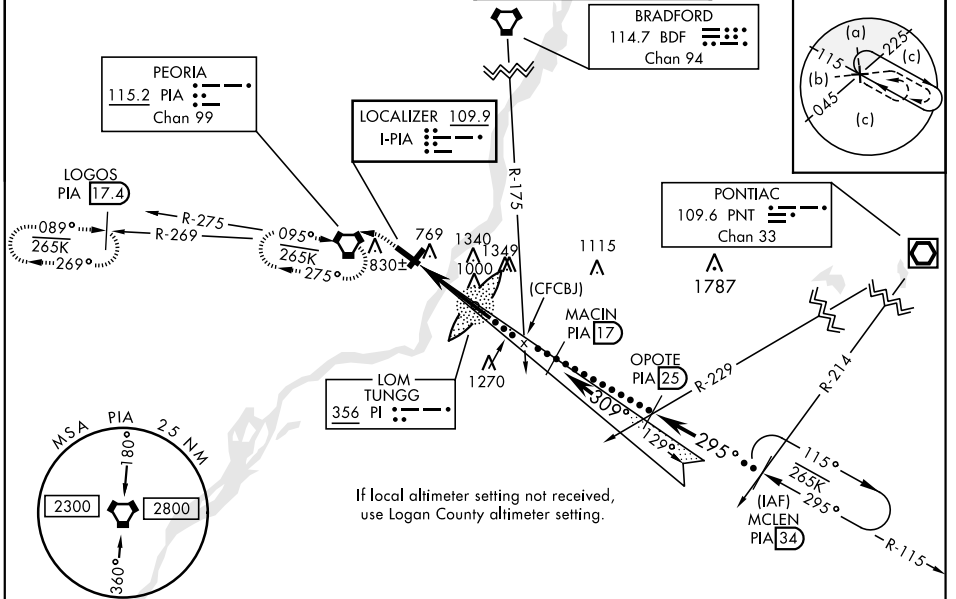
HI-ILS or LOC RWY 31

LOC I-PIA 109.9	APCH CRS 309°	Rwy ldg 10,104' TDZE 650 Arprt Elev 661	JAL 597 [USAF]	GENERAL DOWNING - PEORIA INTL (KPJA)
---------------------------	-------------------------	--------------------------------------------------------------------	----------------	--------------------------------------

* When ALS inop, increase vis ¼ mile.
** When ALS inop, increase vis ½ mile.

MALSR MISSED APPROACH: Climb to 1200, then climbing left turn to 2400 direct PIA VORTAC and hold. (TACAN aircraft: continue via PIA R-269 to LOGOS 17.4 DME and hold west, right turn 089° inbound).

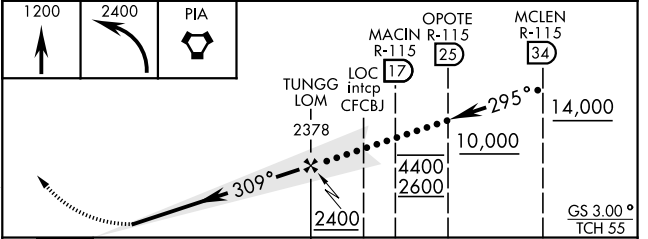
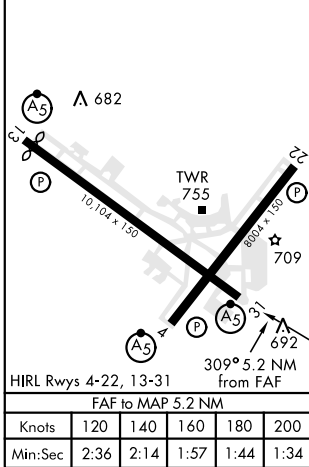
ATIS 126.1 282.2	PEORIA APP CON 125.8 269.2 (305°-125°) 124.675 317.55 (126°-304°)	PEORIA TOWER 124.0 353.85	GND CON 121.85 348.6
----------------------------	---------------------------------------------------------------------------------------	-------------------------------------	--------------------------------



EMERG SAFE ALT 100 NM 3300

ELEV 661	TDZE 650
----------	----------

Rwy 13 ldg 9604'



CATEGORY	C	D	E
S-ILS 31*	850/24	200	(200-½)
S-LOC 31**	1200/60	550	(600-1¼)
C CIRCLING	1200-1½ 539 (600-1½)	1400-2¼ 739 (800-2¼)	1680-3 1019 (1100-3)
LOGAN COUNTY ALTIMETER MINIMA			
S-ILS 31*	939/24	289	(300-½)
S-LOC 31**	1300-1¾	650	(700-1¾)
C CIRCLING	1300-1¾ 639 (700-1¾)	1500-2¾ 839 (900-2¾)	1780-3 1119 (1200-3)

PEORIA, ILLINOIS 40°40'N-89°42'W GENERAL DOWNING - PEORIA INTL (KPJA)

Amdt 7C 26MAR20

HI-ILS or LOC RWY 31

EC-3, 31 DEC 2020 to 28 JAN 2021

EC-3, 31 DEC 2020 to 28 JAN 2021