

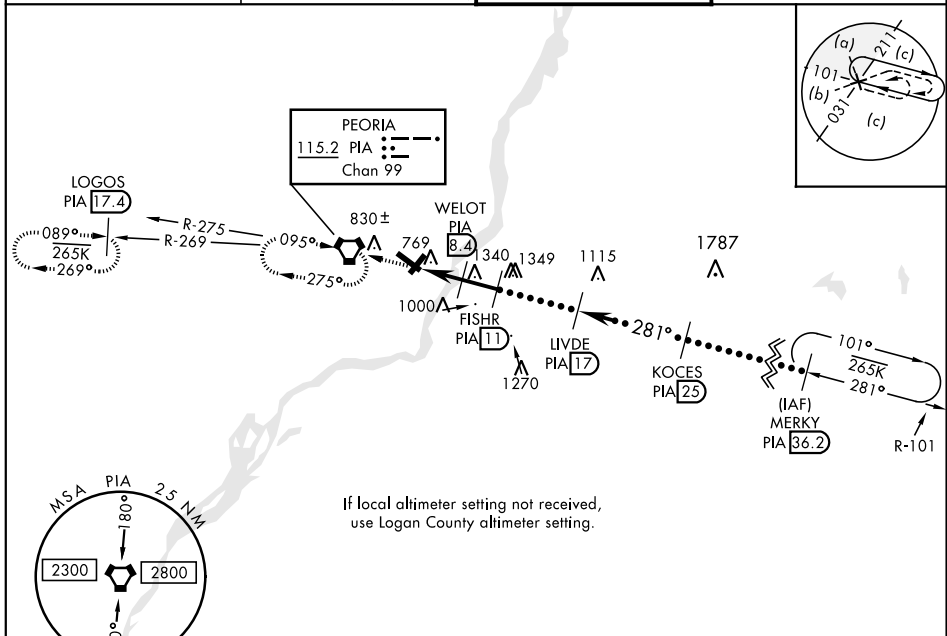
PEORIA, ILLINOIS

HI-VOR/DME or TACAN RWY 31

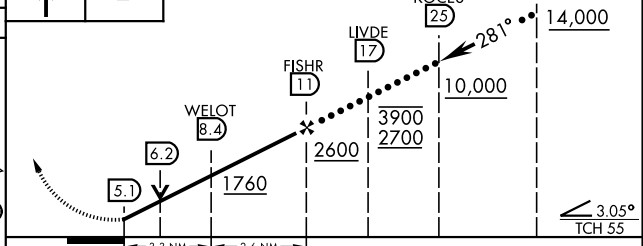
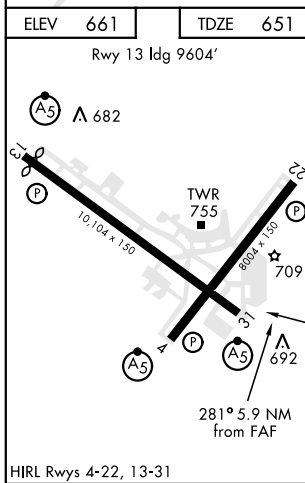
| | | | |
|--|-------------------------|--|---|
| VORTAC PIA 115.2 Chan 99 | APCH CRS 281° | Rwy ldg 10,104 TDZE 651 Arpt Elev 661 | JAL 597 [USAF] GENERAL DOWNING - PEORIA INTL (KPIA) |
|--|-------------------------|--|---|

M MISSED APPROACH: Climb to 2800, direct PIA VORTAC and hold. Continue climb-in-hold to 2800. (TACAN aircraft: continue via PIA R-269 to LOGOS INT/PIA 17.4 DME and hold West, right turn 089° inbound).

| | | | |
|----------------------------|---|-------------------------------------|--------------------------------|
| ATIS 126.1 282.2 | PEORIA APP CON 125.8 269.2 (305°-125°) 124.675 317.55 (126°-304°) | PEORIA TOWER 124.0 353.85 | GND CON 121.85 348.6 |
|----------------------------|---|-------------------------------------|--------------------------------|



| | | | |
|----------------------------|----------|--|-------------------|
| EMERG SAFE ALT 100 NM 3300 | 2800 PIA | VDP NA when using Logan County altimeter setting | MERKY 36.2 14,000 |
| ELEV 661 TDZE 651 | | | |



| CATEGORY | C | D | E |
|-------------------------------|-------------------------|-------------------------|-------------------------|
| S-31 | 1040/50 389 (400-1) | 1040/60 389 (400-1¼) | |
| CIRCLING | 1160-1½ 499 (500-1½) | 1220-2 559 (600-2) | 1680-3 1019 (1100-3) |
| LOGAN COUNTY ALTIMETER MINIMA | | | |
| S-31 | 1140/50 489 (500-1) | 1140/60 489 (500-1¼) | |
| CIRCLING | 1260-1½ 599 (600-1½) | 1320-2 659 (700-2) | 1780-3 1119 (1200-3) |

PEORIA, ILLINOIS 40°40'N-89°42'W GENERAL DOWNING - PEORIA INTL (KPIA)

Amtd 1A 30APR15

HI-VOR/DME or TACAN RWY 31

EC-3, 31 DEC 2020 to 28 JAN 2021

EC-3, 31 DEC 2020 to 28 JAN 2021