

# NDB RWY 31

GENERAL DOWNING-PEORIA INTL (PIA)

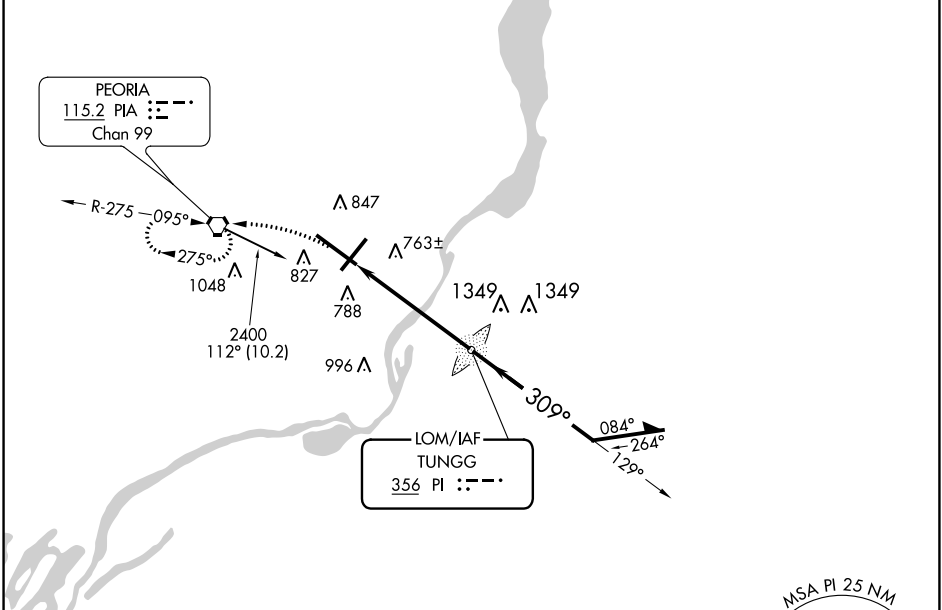
LOM PI	APP CRS	Rwy Idg	<b>10104</b>
<b>356</b>	<b>309°</b>	TDZE	<b>650</b>
		Apt Elev	<b>661</b>

▼ For inop ALS, increase S-31 Cat A/B visibility to RVR 5500, and Cat C/D to 1 3/8 SM. When local altimeter setting not received, use Logan County altimeter setting and increase all MDA 100 feet, increase S-31 Cat C and D visibility 1/4 mile, and Circling Cat C 1/4 mile and Cat D 1/2 mile. Circling Rwy 13, 31 NA at night.

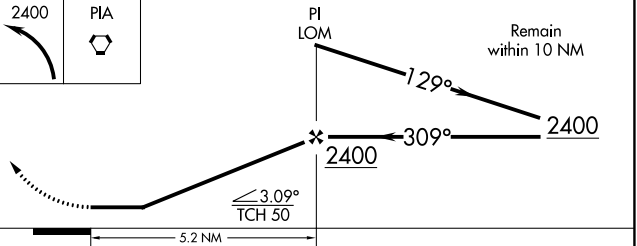
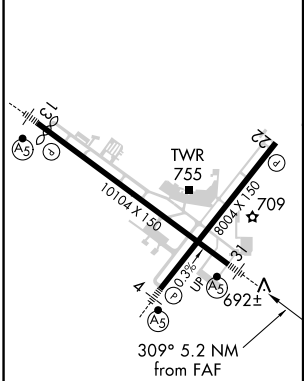


MISSED APPROACH: Climbing left turn 2400 direct PIA VORTAC and hold.

ATIS		PEORIA APP CON		PEORIA TOWER		GND CON	
<b>126.1</b>	<b>282.2</b>	<b>125.8</b>	<b>269.2</b>	<b>124.0</b>	<b>353.85</b>	<b>121.85</b>	<b>348.6</b>
(305°-125°)				(126°-304°)			



ELEV	<b>661</b>	D	TDZE	<b>650</b>
------	------------	---	------	------------



HIRL Rwy 4-22 and 13-31					
FAF to MAP 5.2 NM					
Knots	60	90	120	150	180
Min:Sec	5:12	3:28	2:36	2:05	1:44

CATEGORY	A	B	C	D
S-31	1140/40	490 (500-3/4)	1140/50	490 (500-1)
<input checked="" type="checkbox"/> CIRCLING	1160-1	499 (500-1)	1180-1 1/2 519 (600-1 1/2)	1400-2 1/4 739 (800-2 1/4)

EC-3, 31 DEC 2020 to 28 JAN 2021

EC-3, 31 DEC 2020 to 28 JAN 2021