

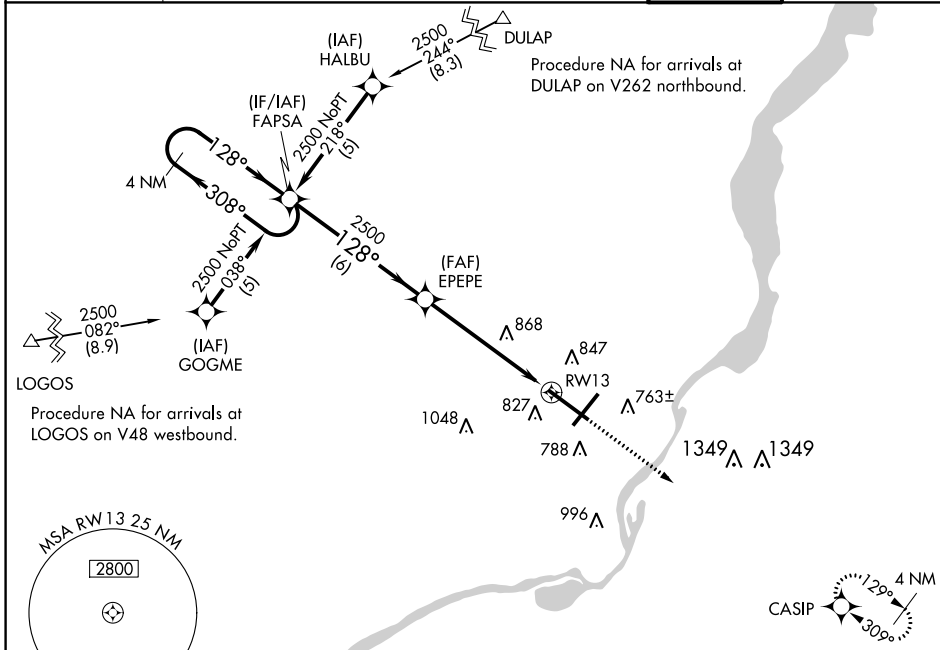
WAAS CH 60922 W13A	APP CRS 128°	Rwy Idg TDZE Apt Elev	9604 636 661
--	------------------------	-----------------------------	---

RNAV (GPS) RWY 13

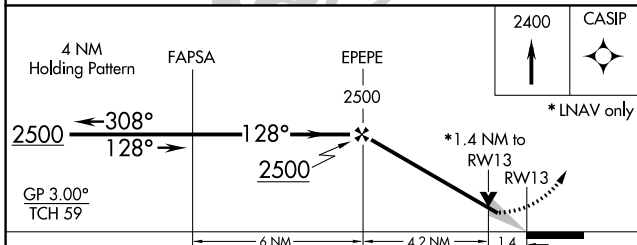
GENERAL DOWNING-PEORIA INTL (PIA)

RNP APCH.	<p>▼ For uncompensated Baro-VNAV systems, LNAV/VNAV NA below -18°C or above 54°C. ▲ When local altimeter setting not received, use Logan County altimeter setting and increase all DA 89 feet and all MDA 100 feet, increase LPV DA all Cats visibility to 1½ mile, LNAV/VNAV DA all Cats visibility to 1¾ mile, LNAV MDA Cat C and D visibility to 1¼ mile, and Circling Cat C ¼ mile and Cat D ½ mile. Baro-VNAV and VDP NA when using Logan County altimeter setting. Circling Rwy 13, 31 NA at night.</p>	MALS R	MISSED APPROACH: Climb to 2400 direct CASIP and hold.
-----------	--	--------	--

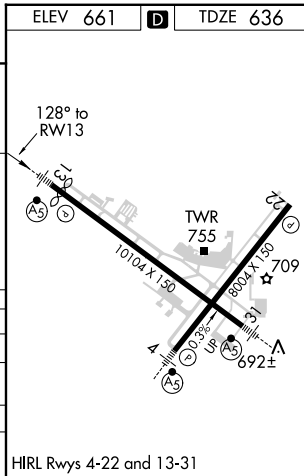
ATIS 126.1 282.2	PEORIA APP CON 125.8 269.2 (305°-125°) 124.675 317.55 (126°-304°)	PEORIA TOWER 124.0 353.85	GND CON 121.85 348.6
----------------------------	--	-------------------------------------	--------------------------------



ELEV 661	TDZE 636
----------	----------



CATEGORY	A	B	C	D
LPV DA		1025-¾	389 (400-¾)	
LNAV/VNAV DA		1083-1	447 (500-1)	
LNAV MDA	1120-½	484 (500-½)	1120-1	484 (500-1)
CIRCLING	1160-1	499 (500-1)	1180-1½ 519 (600-1½)	1400-2¼ 739 (800-2¼)



EC-3, 31 DEC 2020 to 28 JAN 2021

EC-3, 31 DEC 2020 to 28 JAN 2021