

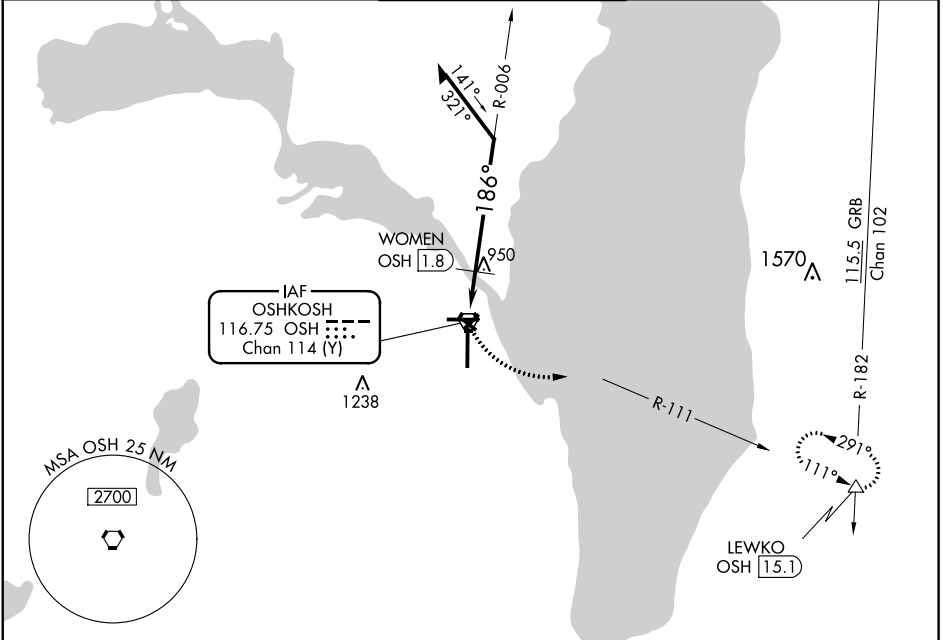
VORTAC OSH 116.75 Chan 114 (Y)	APP CRS 186°	Rwy Idg TDZE 794 Apt Elev 808
--	------------------------	---

VOR RWY 18
WITTMAN RGNL (OSH)

⚠ Circling to Rwy 5, 23, and 31 NA at night. VDP NA with Fond Du Lac County altimeter setting. When local altimeter setting not received, use Fond Du Lac altimeter setting and increase all MDA 40 feet; increase WOMEN fix minimums Circling Cat D visibility ¼ mile. Helicopter visibility reduction below ¾ SM NA.

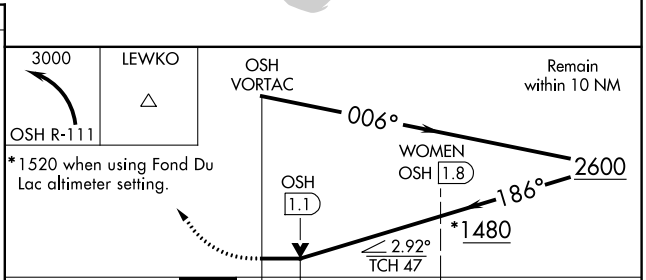
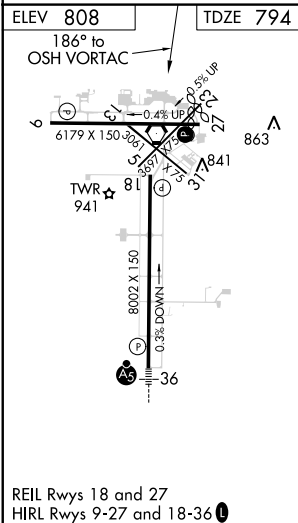
MISSED APPROACH: Climbing left turn to 3000 on OSH VORTAC R-111 to LEWKO INT/OSH 15.1 DME and hold.

ATIS 125.9	MILWAUKEE APP CON 127.0 263.075	OSHKOSH TOWER ★ 118.5 (CTAF) 290.9	GND CON 132.3	UNICOM 122.95
----------------------	---	--	-------------------------	-------------------------



EC-3, 31 DEC 2020 to 28 JAN 2021

EC-3, 31 DEC 2020 to 28 JAN 2021



CATEGORY	A	B	C	D
S-18	1480-1	686 (700-1)	1480-2	686 (700-2)
C CIRCLING	1480-1	672 (700-1)	1480-2	1480-2¼ 672 (700-2¼)
WOMEN FIX MINIMUMS				
S-18	1260-1	466 (500-1)	1260-1¾	466 (500-1¾)
C CIRCLING	1280-1 472 (500-1)	1300-1 492 (500-1)	1360-1½ 552 (600-1½)	1440-2 632 (700-2)