

| | | |
|--|------------------------|---|
| VORTAC OSH 116.75 Chan 114 (Y) | APP CRS 090° | Rwy Idg 5648 TDZE 797 Apt Elev 808 |
|--|------------------------|---|

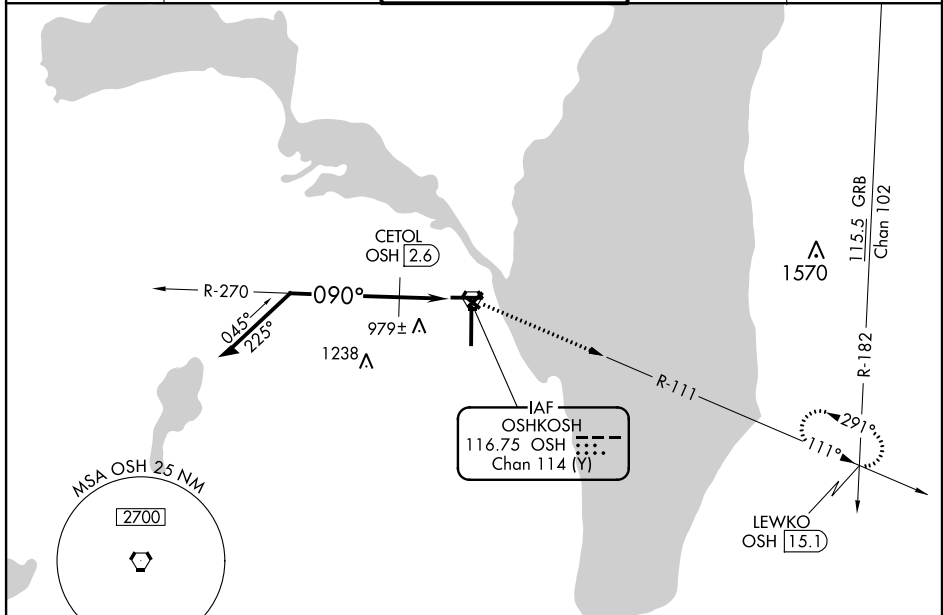
VOR RWY 9

WITTMAN RGNL (OSH)

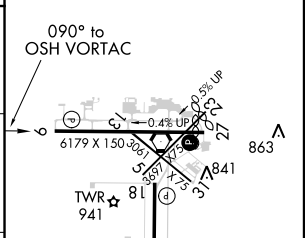
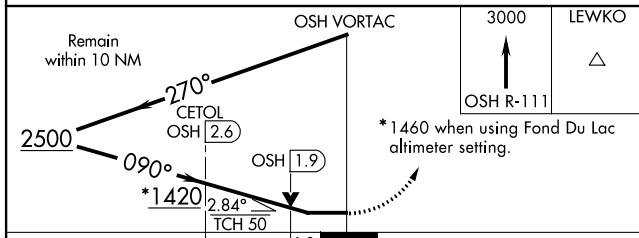
⚠ Circling to Rwy 5, 23, and 31 NA at night. When local altimeter setting not received, use Fond Du Lac altimeter setting and increase all MDA 40 feet and increase S-9 Cats C and D visibility and Circling Cat C visibility 1/8 mile and Circling Cat D visibility 1/4 mile, increase CETOL fix minimums Circling Cat D visibility 1/4 mile. VDP NA with Fond Du Lac altimeter setting. Helicopter visibility reduction below 3/4 SM NA.

MISSED APPROACH: Climb to 3000 on OSH VORTAC R-111 to LEWKO INT/OSH 15.1 DME and hold.

| | | | | |
|----------------------|---|--|-------------------------|-------------------------|
| ATIS 125.9 | MILWAUKEE APP CON 127.0 263.075 | OSHKOSH TOWER ★ 118.5 (CTAF) 290.9 | GND CON 132.3 | UNICOM 122.95 |
|----------------------|---|--|-------------------------|-------------------------|



| | | |
|----------|----------|----------|
| ELEV 808 | D | TDZE 797 |
|----------|----------|----------|



| CATEGORY | A | B | C | D |
|--------------------|-----------------------|-----------------------|--|--|
| S-9 | 1420-1 | 623 (700-1) | 1420-1 ³ / ₄ | 623 (700-1 ³ / ₄) |
| C CIRCLING | 1420-1 | 612 (700-1) | 1420-1 ³ / ₄ | 1440-2 612 (700-1 ³ / ₄) |
| CETOL FIX MINIMUMS | | | | |
| S-9 | 1240-1 | 443 (500-1) | 1240-1 ³ / ₈ | 443 (500-1 ³ / ₈) |
| C CIRCLING | 1280-1 472 (500-1) | 1300-1 492 (500-1) | 1360-1 ¹ / ₂ 552 (600-1 ¹ / ₂) | 1440-2 632 (700-2) |

REIL Rwy 18 and 27
HRL Rwy 9-27 and 18-36

EC-3, 31 DEC 2020 to 28 JAN 2021

EC-3, 31 DEC 2020 to 28 JAN 2021