

# JORJO FIVE DEPARTURE (RNAV)

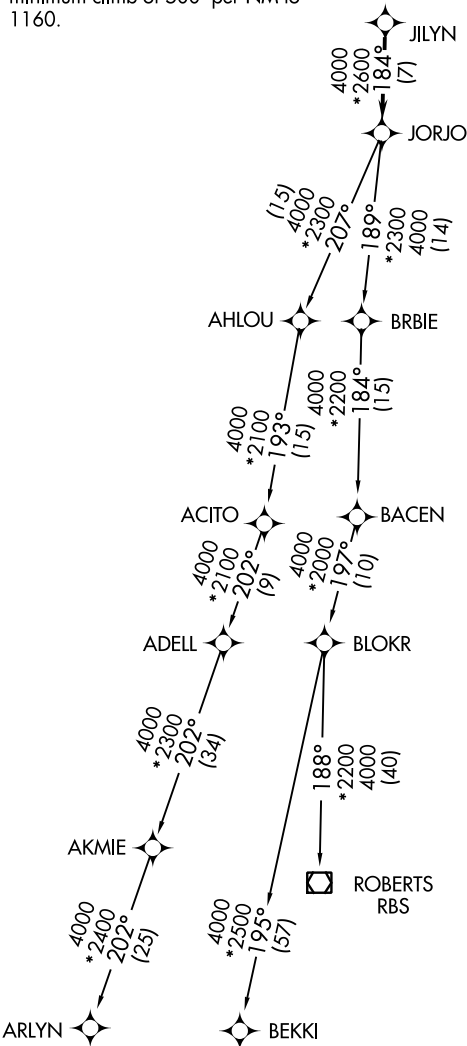
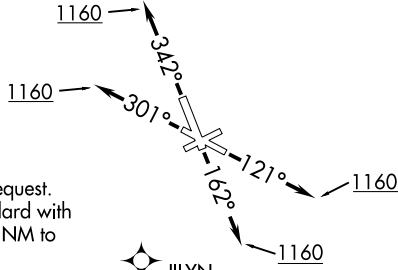
CHICAGO/PROSPECT HEIGHTS/WHEELING, ILLINOIS

ATIS 124.2  
GND CON  
121.7  
EXECUTIVE TOWER \*  
119.9 (CTAF)  
CHICAGO DEP CON  
120.55 306.925

**TOP ALTITUDE:  
3000**

### TAKEOFF MINIMUMS

Rwys 6, 24: NA - Airport request.  
Rwys 12, 16, 30, 34: Standard with  
minimum climb of 500' per NM to  
1160.



**DEPARTURE ROUTE DESCRIPTION**

TAKEOFF RWY 12: Climb heading 121° or as assigned by ATC to at or above 1160, expect vectors to JILYN. Thence . . .

TAKEOFF RWY 16: Climb heading 162° or as assigned by ATC to at or above 1160, expect vectors to JILYN. Thence . . .

TAKEOFF RWY 30: Climb heading 301° or as assigned by ATC to at or above 1160, expect vectors to JILYN. Thence . . .

TAKEOFF RWY 34: Climb heading 342° or as assigned by ATC to at or above 1160, expect vectors to JILYN. Thence . . .

. . . on track 184° to JORJO, then on (transition), maintain 3000, expect filed altitude 10 minutes after departure.

AKMIE TRANSITION (JORJO5.AKMIE)  
ARLYN TRANSITION (JORJO5.ARLYN)  
BEKKI TRANSITION (JORJO5.BEKKI)  
ROBERTS TRANSITION (JORJO5.RBS)

NOTE: RNAV 1.  
 NOTE: RADAR required.  
 NOTE: DME/DME/IRU or GPS required.  
 NOTE: TURBOJET depatures maintain 250K until advised by ATC.  
 NOTE: AKMIE transition: for aircraft inbound to BMI, SPI, or PIA, or as assigned by ATC.  
 NOTE: ROBERTS transition: for aircraft inbound to CMI or STL, or as assigned by ATC.

NOTE: Chart not to scale.

EC-3, 31 DEC 2020 to 28 JAN 2021

EC-3, 31 DEC 2020 to 28 JAN 2021

# JORJO FIVE DEPARTURE (RNAV)

(JORJO5.JORJO) 01FEB18

CHICAGO/PROSPECT HEIGHTS/WHEELING, ILLINOIS  
CHICAGO EXECUTIVE (PWK)