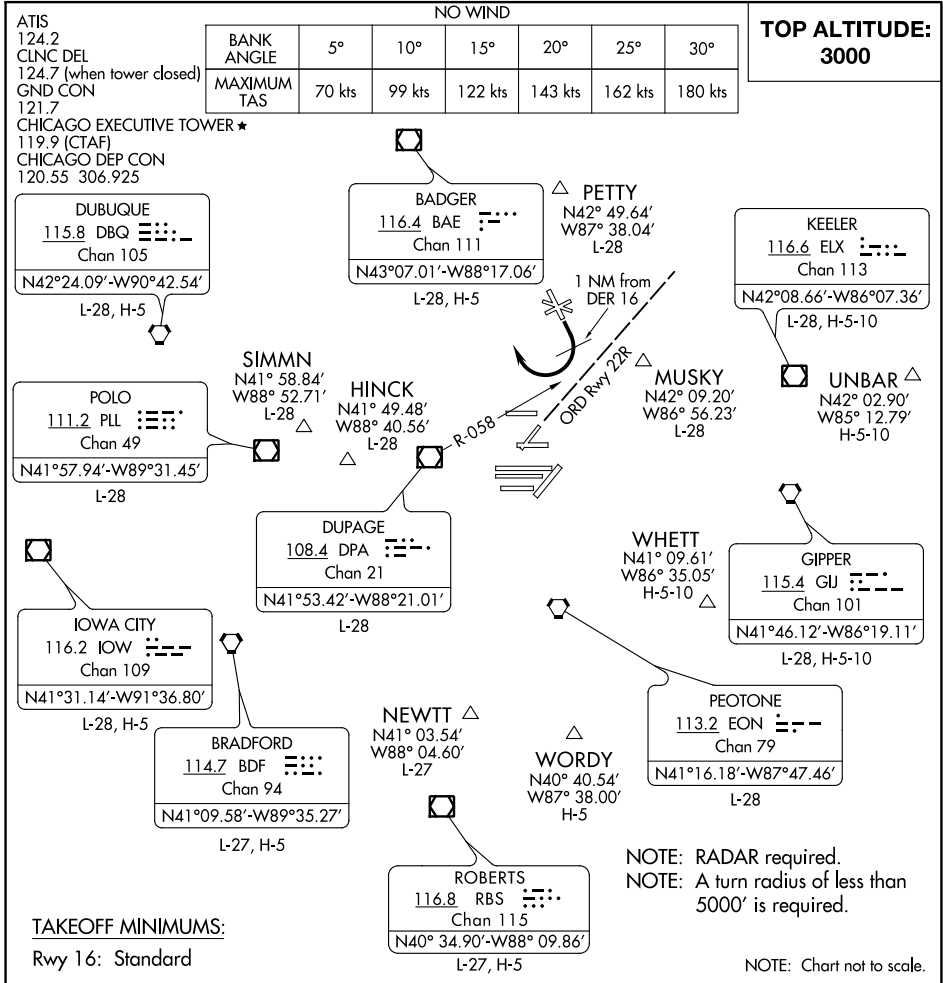


# PAL-WAUKEE FIVE DEPARTURE

CHICAGO/PROSPECT HEIGHTS/WHEELING, ILLINOIS



EC-3, 31 DEC 2020 to 28 JAN 2021

EC-3, 31 DEC 2020 to 28 JAN 2021

## DEPARTURE ROUTE DESCRIPTION

**TAKEOFF RUNWAY 16:** Start right turn within 1 NM of departure end of runway and complete turn to assigned heading north of R-058 of the Dupage (DPA) VOR/DME. If unable to comply, advise Executive Tower prior to take-off, thence . . . .

. . . . all aircraft will receive RADAR vectors to appropriate noaid/fix; maintain 3000 or assigned altitude. Expect clearance to requested altitude/flight level (three minutes for jet/turbo engines or five minutes for piston engines) after departure.

# PAL-WAUKEE FIVE DEPARTURE

CHICAGO/PROSPECT HEIGHTS/WHEELING, ILLINOIS  
CHICAGO EXECUTIVE(PWK)