

LOC I-SKC <b>109.5</b>	APP CRS <b>103°</b>	Rwy Idg <b>5849</b>
		TDZE <b>901</b>
		Apt Elev <b>911</b>

# ILS or LOC RWY 10

WAUKESHA COUNTY (U/S)

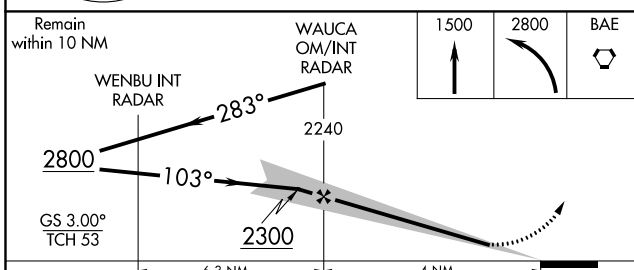
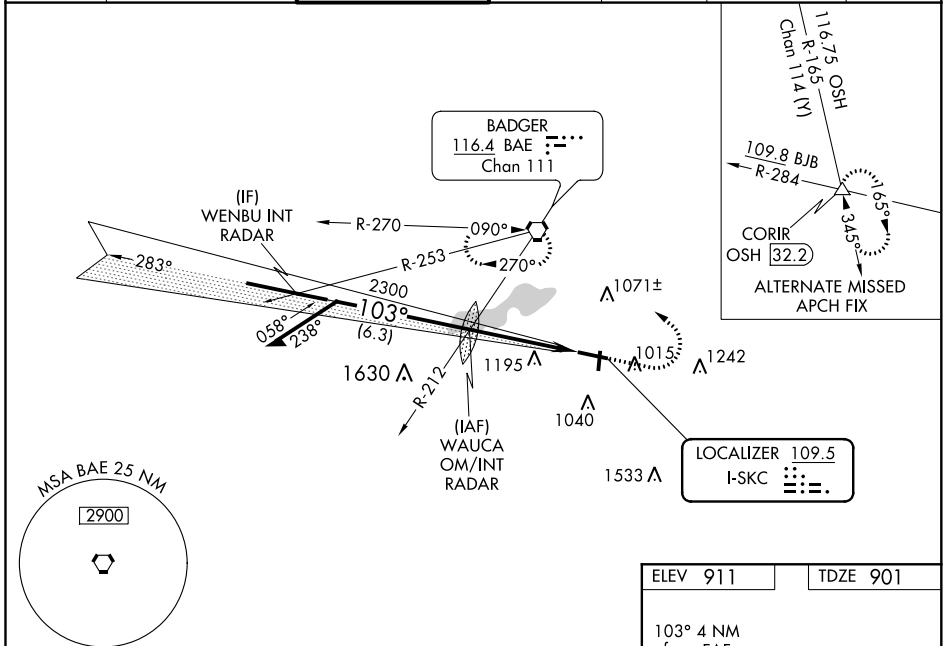
**RADAR required for procedure entry.**

**MALSR**

For inoperative MALSR, increase S-LOC 10 Cat C/D visibility to 1 1/8 mile. For inoperative MALSR when using Lawrence J Timmerman altimeter setting, increase S-LOC 10 Cat C/D visibility to 1 1/8 mile. When local altimeter setting not received, use Lawrence J Timmerman altimeter setting and increase DA 46 feet and all MDA 60 feet, increase S-LOC 10 Cat C/D visibility to 1 1/4 mile, and increase Circling Cat D visibility 1/4 mile.

**MISSED APPROACH:**  
Climb to 1500 then climbing left turn to 2800 direct BAE VORTAC and hold.

ATIS <b>118.875</b>	MILWAUKEE APP CON <b>125.35 307.0</b>	WAUKESHA TOWER * <b>123.7</b> (CTAF)	GND CON <b>121.6</b>	CLNC DEL <b>121.6</b>	CLNC DEL <b>128.7</b> (When twr closed)	UNICOM <b>122.95</b>
------------------------	--	---	-------------------------	--------------------------	---	-------------------------



CATEGORY	A	B	C	D
S-ILS-10	1101-1/2		200 (200-1/2)	
S-LOC-10	1400-1/2	499 (500-1/2)	1400-1	499 (500-1)
CIRCLING	1460-1 549 (600-1)	1480-1 569 (600-1)	1520-1 3/4 609 (700-1 3/4)	1600-2 1/4 689 (700-2 1/4)

ELEV 911	TDZE 901
----------	----------

103° 4 NM from FAF

**HIRL** Rwy 10-28   
**MIRL** Rwy 18-36   
**REIL** Rwy 18, 28 and 36

FAF to MAP 4 NM

Knots	60	90	120	150	180
Min:Seq	4:00	2:40	2:00	1:36	1:20

EC-3, 31 DEC 2020 to 28 JAN 2021

EC-3, 31 DEC 2020 to 28 JAN 2021