


WAAS CH 53411 W10A	APP CRS 103°	Rwy Idg 5849 TDZE 901 Apt Elev 911
--	------------------------	---


RNAV (GPS) RWY 10

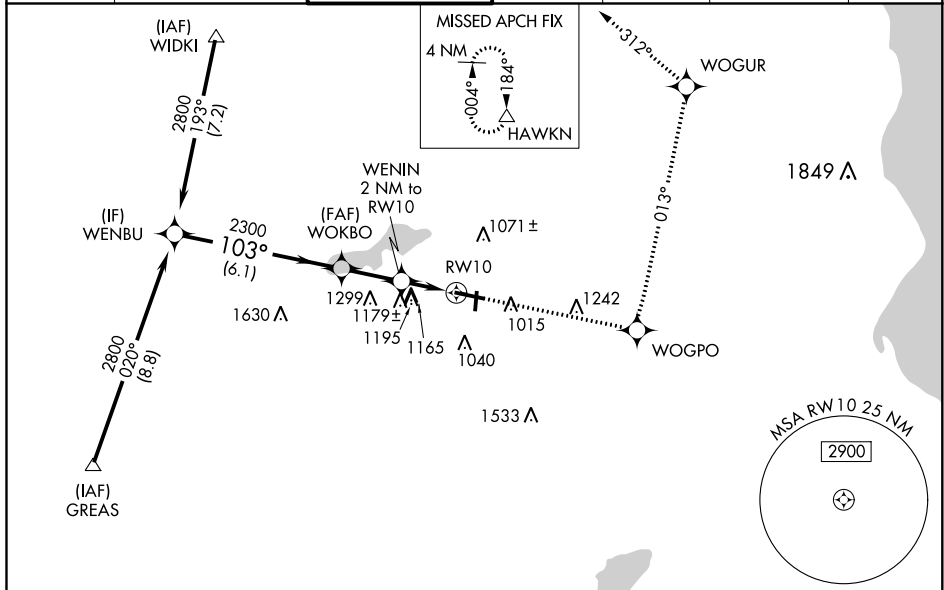
WAUKESHA COUNTY (UES)




⚠ Baro-VNAV NA when using Lawrence J Timmerman altimeter setting. For uncompensated Baro-VNAV systems, LNAV/VNAV NA below -16°C (4°F) or above 54°C (130°F). DME/DME RNP-0.3 NA. When local altimeter setting not received, use Lawrence J Timmerman altimeter setting and increase all DA 46 feet and all MDA 60 feet, increase LNAV/VNAV all Cats visibility ¼ mile; increase Circling Cat D visibility ¼ mile.

MALS R 

MISSED APPROACH: Climb to 3000 direct WOGPO and left turn on track 013° to WOGUR and track 312° to HAWKN and hold.

ATIS 118.875	MILWAUKEE APP CON 125.35 307.0	WAUKESHA TOWER ★ 123.7 (CTAF) 	GND CON 121.6	CLNC DEL 121.6	CLNC DEL 128.7 (When twr closed)	UNICOM 122.95
------------------------	--	---	-------------------------	--------------------------	---	-------------------------



Procedure Turn NA	3000	WOGPO	WOGUR	HAWKN
			tr 013°	
WENBU	2800	WOKBO	WENIN 2 NM to RW10	RW10
	103°			
GP 3.00° TCH 53	2300	*1580		
	6.1 NM	2.2 NM	2 NM	
CATEGORY	A	B	C	D
LPV DA		1101-½	200 (200-½)	
LNAV/VNAV DA		1537-¾	636 (700-¾)	
LNAV MDA	1440-½	539 (600-½)	1440-1 539 (600-1)	1440-¼ 539 (600-¼)
CIRCLING	1460-1 549 (600-1)	1480-1 569 (600-1)	1520-¾ 609 (700-¾)	1600-2¼ 689 (700-2¼)

ELEV 911	TDZE 901
----------	----------

*LNAV only

103° to RW10

013°

81


5849 X.100


3599 X.75


TWR 960

28

36

HIRL Rwy 10-28 

MIRL Rwy 18-36 

REIL Rwy 18, 28 and 36 

EC-3, 31 DEC 2020 to 28 JAN 2021

EC-3, 31 DEC 2020 to 28 JAN 2021