

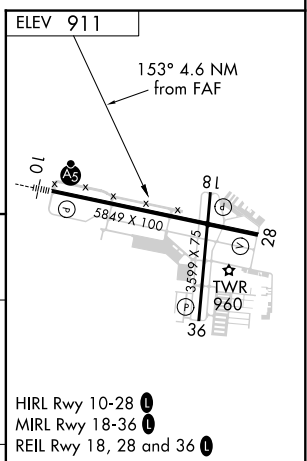
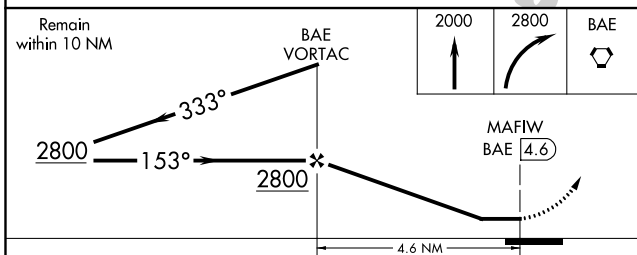
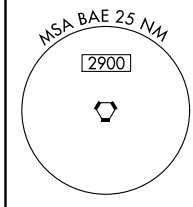
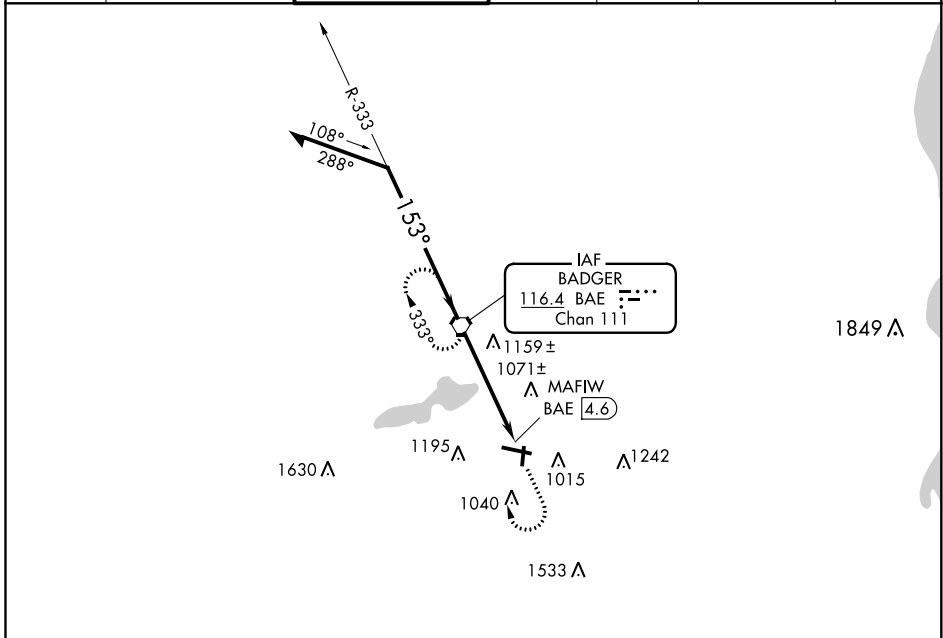
VORTAC BAE 116.4 Chan 111	APP CRS 153°	Rwy Idg TDZE Apt Elev	N/A N/A 911
---	------------------------	-----------------------------	--

VOR-A
WAUKESHA COUNTY (U/S)

⚠ When local altimeter setting not received, use Lawrence J Timmerman altimeter setting and increase all MDA 60 feet, increase Circling Cat D visibility ¼ mile.

⚠ MISSED APPROACH: Climb to 2000, then climbing right turn to 2800 direct BAE VORTAC and hold.

ATIS 118.875	MILWAUKEE APP CON 125.35 307.0	WAUKESHA TOWER ★ 123.7 (CTAF) 0	GND CON 121.6	CLNC DEL 121.6	CLNC DEL 128.7 (When twr closed)	UNICOM 122.95
------------------------	--	--	-------------------------	--------------------------	---	-------------------------



FAF to MAP 4.6 NM					
Knots	60	90	120	150	180
Min:Sec	4:36	3:04	2:18	1:50	1:32

EC-3, 31 DEC 2020 to 28 JAN 2021

EC-3, 31 DEC 2020 to 28 JAN 2021