

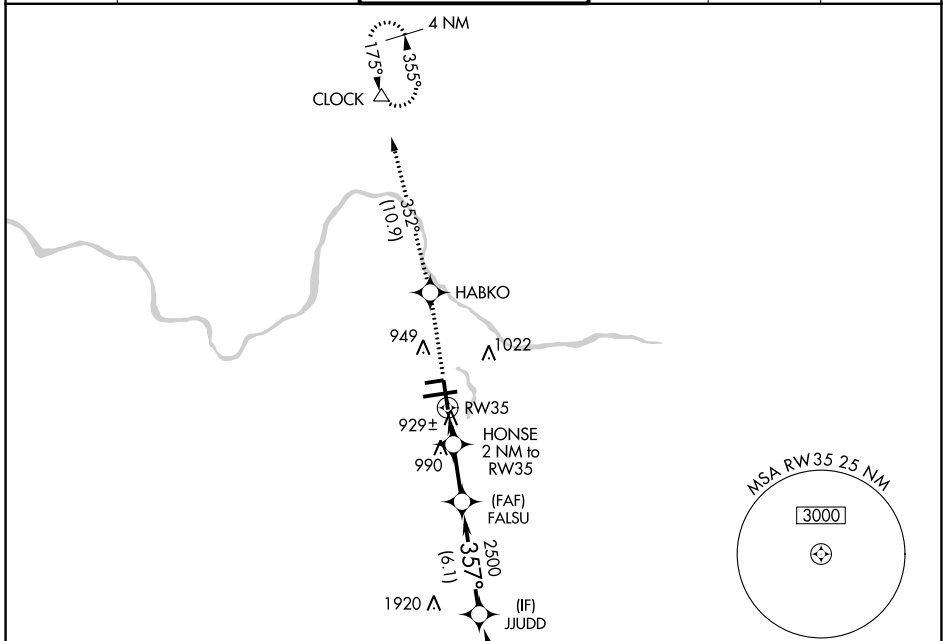
WAAS CH <b>87112</b> <b>W35A</b>	APP CRS <b>357°</b>	Rwy Idg <b>8501</b> TDZE <b>790</b> Apt Elev <b>794</b>
--	------------------------	---

# RNAV (GPS) RWY 35

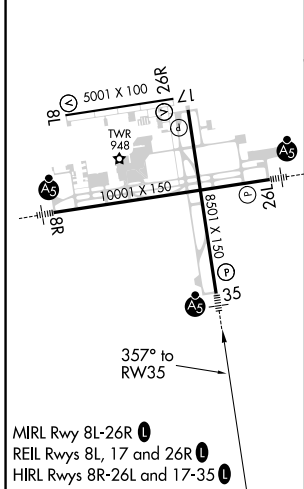
GERALD R FORD INTL (G.R.R.)

RNP APCH.	MALSR	MISSED APPROACH: Climb to 3000 direct HABKO and track 352° to CLOCK and hold.
ASR	AS	For uncompensated Baro-VNAV systems, LNAV/VNAV NA below -16°C or above 54°C. For inop ALS, increase LNAV Cat D visibility to RVR 6000. ** RVR 1800 authorized with use of FD or AP or HUD to DA.

ATIS <b>118.725</b>	GREAT LAKES APP CON * <b>128.4 257.6</b>	GRAND RAPIDS TOWER * <b>135.65 (CTAF) 0 339.8</b>	GND CON <b>121.8</b>	CLNC DEL <b>119.3</b>	UNICOM <b>122.95</b>
------------------------	---	--	-------------------------	--------------------------	-------------------------

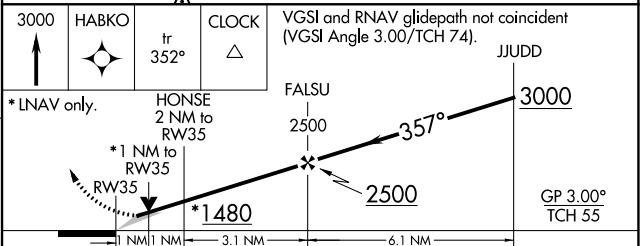


ELEV 794	<b>D</b>	TDZE 790
----------	----------	----------



MIRL Rwy 8L-26R **L**  
REIL Rwy 8L, 17 and 26R **L**  
HIRL Rwy 8R-26L and 17-35 **L**

3000	HABKO	CLOCK	Procedure NA for arrivals at BOHRR on V285 southbound.
↑	✧	△	
	tr 352°		



CATEGORY	A	B	C	D
LPV DA**	990/24 200 (200-½)			
LNAV/VNAV DA	1236/50 446 (500-1)			
LNAV MDA	1180/24	390 (400-½)	1180/35 390 (400-¾)	1180/50 390 (400-1)
<b>C</b> CIRCLING	1260-1	466 (500-1)	1340-1½ 546 (600-1½)	1360-2 566 (600-2)

EC-1, 31 DEC 2020 to 28 JAN 2021

EC-1, 31 DEC 2020 to 28 JAN 2021