

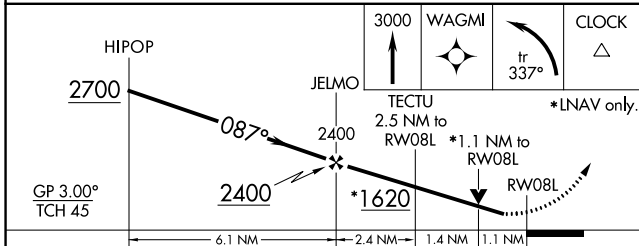
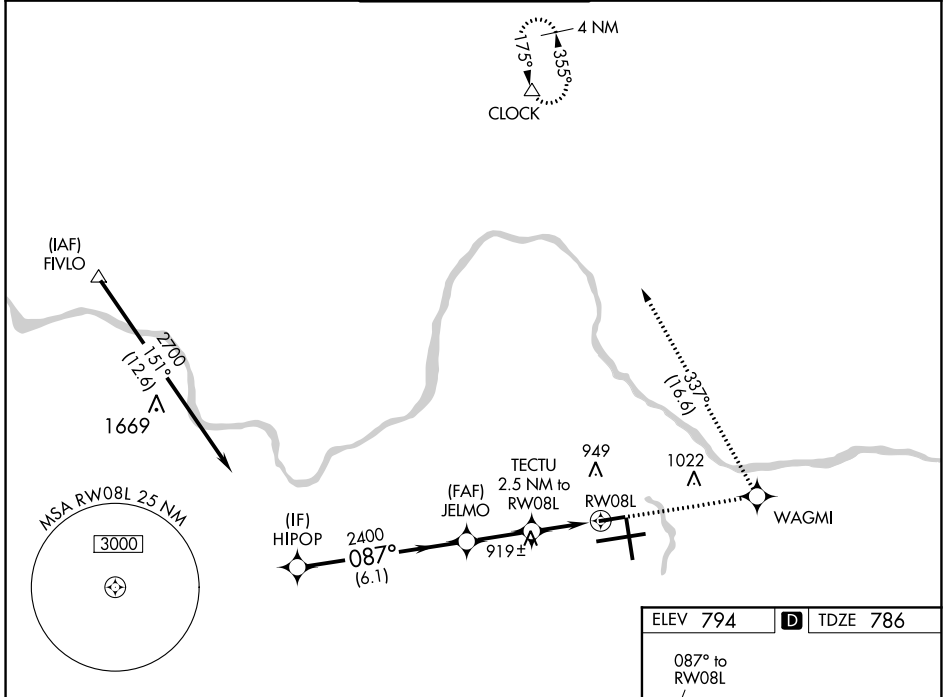
WAAS CH 40213 W08A	APP CRS 087°	Rwy Idg TDZE Apt Elev	5001 786 794
--	------------------------	-----------------------------	---

RNAV (GPS) RWY 8L

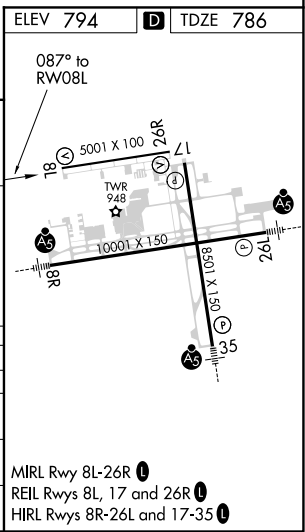
GERALD R FORD INTL (G.R.)

RNP APCH.		MISSED APPROACH: Climb to 3000 direct WAGMI and left turn on track 337° to CLOCK and hold.	
Rwy 8L helicopter visibility reduction below 3/4 SM NA. For uncompensated Baro-VNAV systems, LNAV/VNAV NA below -16°C or above 54°C.			

ATIS 118.725	GREAT LAKES APP CON * 128.4 257.6	GRAND RAPIDS TOWER * 135.65 (CTAF) 0 339.8	GND CON 121.8	CLNC DEL 119.3	UNICOM 122.95
------------------------	---	--	-------------------------	--------------------------	-------------------------



CATEGORY	A	B	C	D
LPV DA	1036-1		250 (300-1)	
LNAV/VNAV DA	1203-1½		417 (500-1½)	
LNAV MDA	1180-1	394 (400-1)	1180-1¼ 394 (400-1½)	1180-1¼ 394 (400-1¼)
CIRCLING	1260-1	466 (500-1)	1340-1½ 546 (600-1½)	1360-2 566 (600-2)



EC-1, 31 DEC 2020 to 28 JAN 2021

EC-1, 31 DEC 2020 to 28 JAN 2021