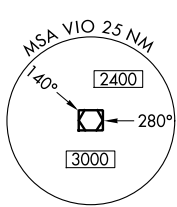
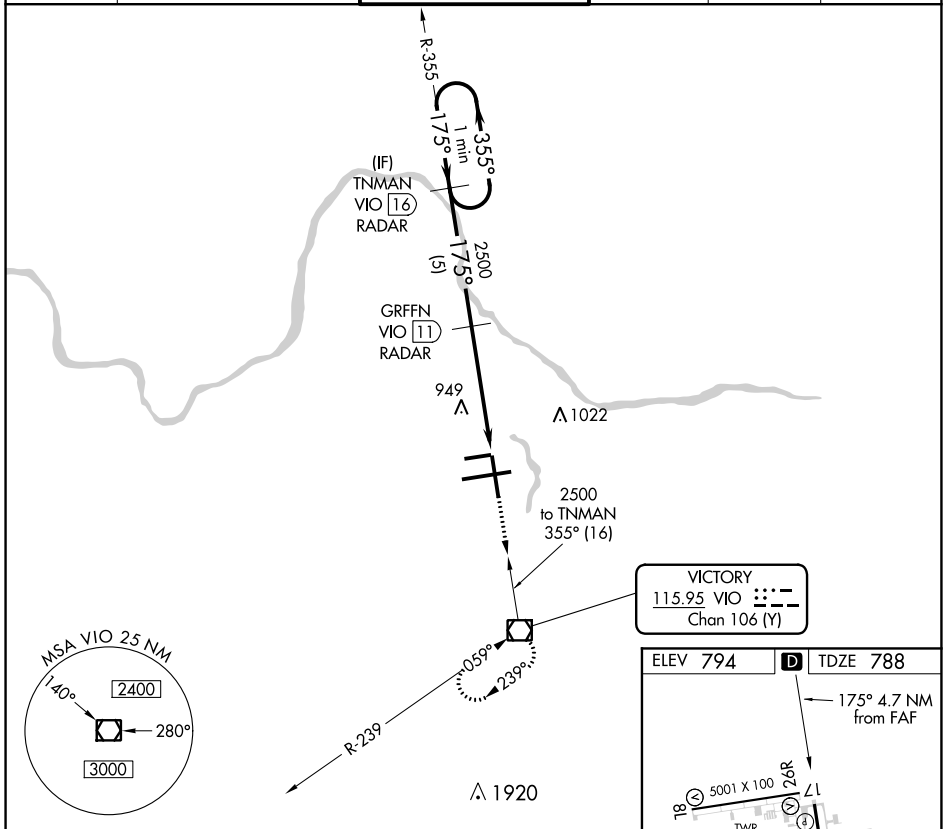


VOR/DME VIO	APP CRS	Rwy Idg	<b>8501</b>
<b>115.95</b>	<b>175°</b>	TDZE	<b>788</b>
Chan <b>106 (Y)</b>		Apt Elev	<b>794</b>

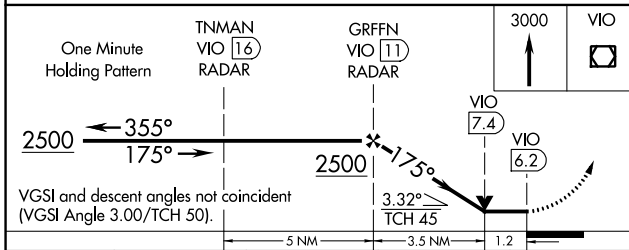
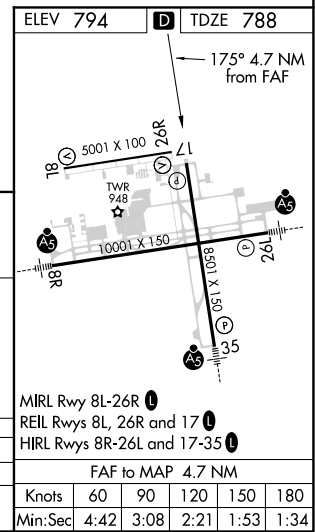
# VOR RWY 17

GERALD R FORD INTL (G.R.)

DME or RADAR required.		MISSED APPROACH: Climb to 3000 direct VIO VOR/DME and hold.			
<p><b>⚠</b> When local altimeter setting not received, use Holland altimeter setting and increase all MDAs 80 feet and increase S-17 Cat D visibility ¼ SM. Rwy 17 helicopter visibility reduction below ¼ SM NA.</p>					
ATIS	GREAT LAKES APP CON *	GRAND RAPIDS TOWER *	GND CON	CLNC DEL	UNICOM
<b>118.725</b>	<b>128.4 257.6</b>	<b>135.65 (CTAF) 0 339.8</b>	<b>121.8</b>	<b>119.3</b>	<b>122.95</b>



**VICTORY**  
 115.95 VIO  
 Chan 106 (Y)



CATEGORY	A	B	C	D
S-17	1200-1	412 (500-1)	1200-1¼	412 (500-1¼)
<b>CIRCLING</b>	1280-1	486 (500-1)	1340-1½	1360-2
			546 (600-1½)	566 (600-2)

EC-1, 31 DEC 2020 to 28 JAN 2021

EC-1, 31 DEC 2020 to 28 JAN 2021

FAF to MAP 4.7 NM					
Knots	60	90	120	150	180
Min:Sec	4:42	3:08	2:21	1:53	1:34