

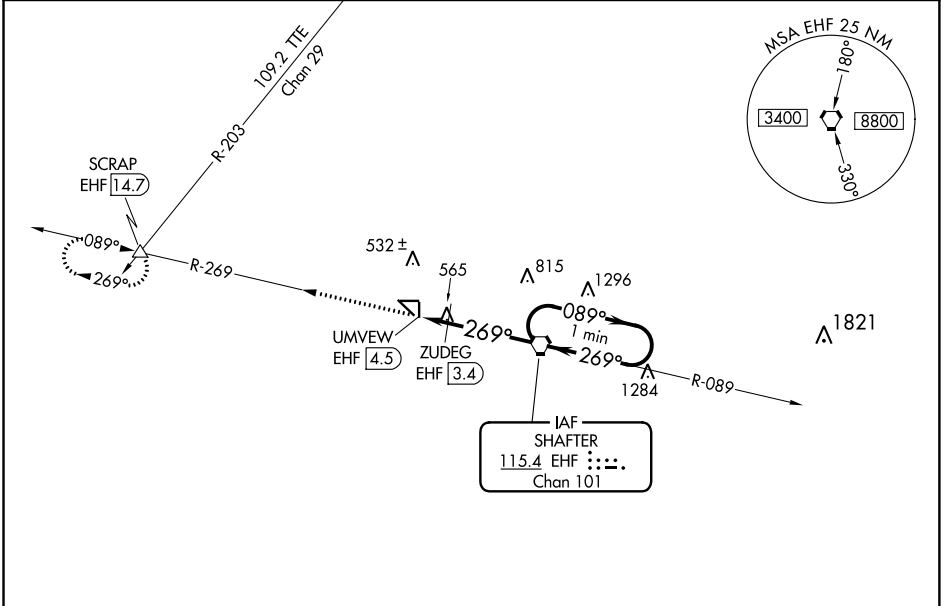
VORTAC EHF <b>115.4</b> Chan <b>101</b>	APP CRS <b>269°</b>	Rwy Idg TDZE Apt Elev	<b>N/A</b> <b>N/A</b> <b>425</b>
---	------------------------	-----------------------------	--

**VOR-A**  
SHAFTER-MINTER FIELD (MIT)

**NA** Circling to Rwy 17, 35, 8 and 26 NA at night. When local altimeter setting not received, use Bakersfield altimeter setting and increase all MDAS 40 feet and increase Cat C visibility to 1 3/4.

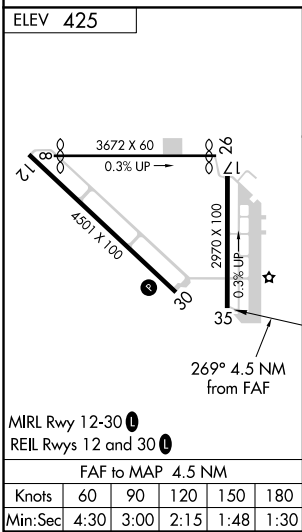
MISSED APPROACH: Climb to 4000 on EHF VORTAC R-269 to SCRAP INT/EHF 14.7 DME and hold, continue climb-in-hold to 4000.

AWOS-3 <b>121.125</b>	BAKERSFIELD APP CON <b>126.45 270.3</b>	CTAF <b>122.9</b>
--------------------------	--	----------------------



SW-3, 31 DEC 2020 to 28 JAN 2021

SW-3, 31 DEC 2020 to 28 JAN 2021



4000	SCRAP △	ZUDEG EHF 3.4	EHF VORTAC	One Minute Holding Pattern
EHF R-269	UMVEW EHF 4.5	269°	2600	2900
	1000*	1.1 NM	3.4 NM	
				*1040 when using Bakersfield altimeter setting.
CATEGORY	A	B	C	D
CIRCLING	1000-1	575 (600-1)	1000-1 1/2	575 (600-1 1/2)
	ZUDEG FIX MINIMUMS			
CIRCLING	900-1	475 (500-1)	900-1 1/2	475 (500-1 1/2)