

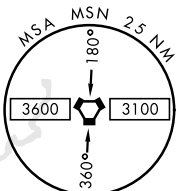
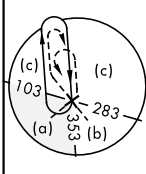
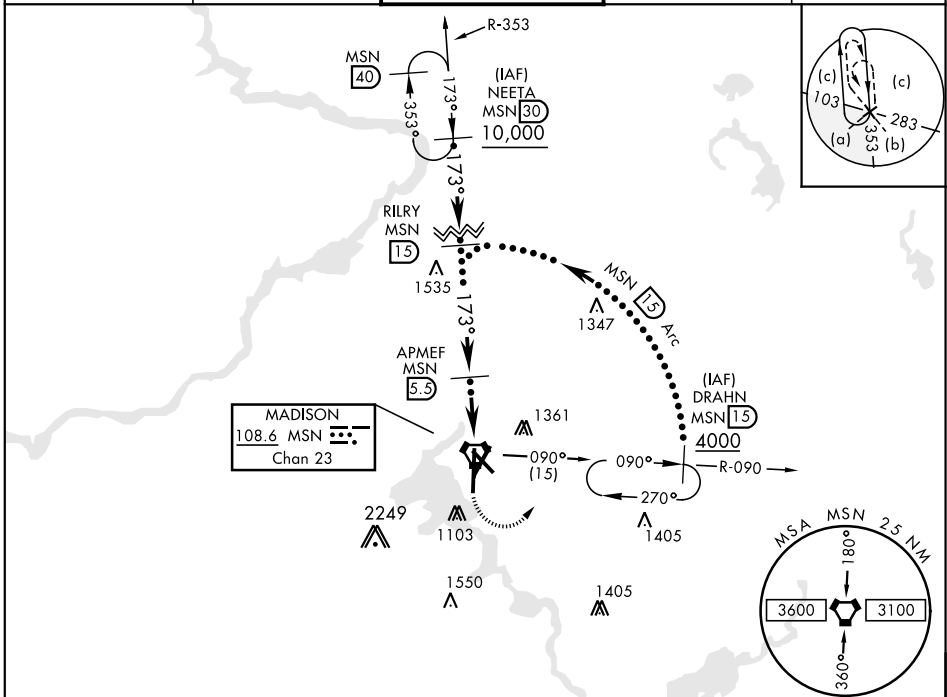
MADISON, WISCONSIN

HI-TACAN RWY 18

VORTAC MSN 108.6 Chan 23	APCH CRS 173°	Rwy ldg TDZE 8606 Arprt Elev 887	JAL-245 [USAF] MADISON/ DANE COUNTY REGIONAL-TRUAX FIELD (KMSN)
--	-------------------------	--	--

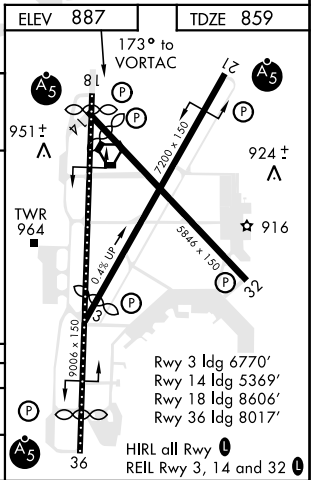
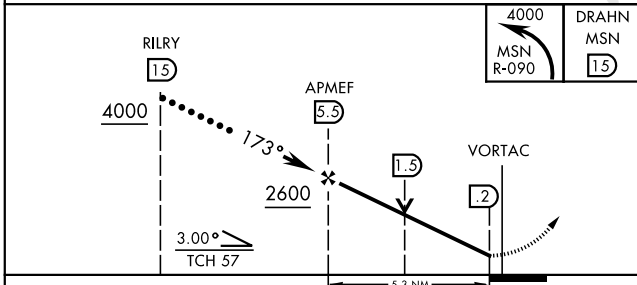
MALS A5	MISSED APPROACH: Climbing left turn to 4000 on MSN VORTAC R-090 to DRAHN 15 DME and hold.
-------------------	---

ATIS 124.65 278.3	MADISON APP CON EAST 120.1 350.3 WEST 135.45 343.7	MADISON TOWER ★ 119.3 0 (CTAF) 257.8	GND CON 121.9 348.6	ASR
-----------------------------	--	---	-------------------------------	-----



RADAR REQUIRED

EMERG SAFE ALT 100 NM 3600



CATEGORY	C	D	E
S-18	1360/55	496	(500-1)
CIRCLING	1460-1½ 573 (600-1½)	1700-2¾ 813 (900-2¾)	1700-3 813 (900-3)

MADISON, WISCONSIN 43°08'N-89°20'W MADISON/ DANE COUNTY REGIONAL-TRUAX FIELD (KMSN)
Amdt 1B 28FEB19

HI-TACAN RWY 18

EC-3, 15 JUL 2021 to 12 AUG 2021

EC-3, 15 JUL 2021 to 12 AUG 2021