

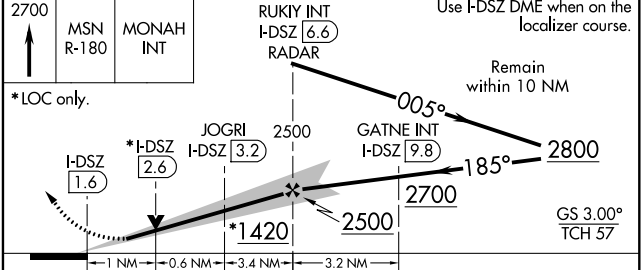
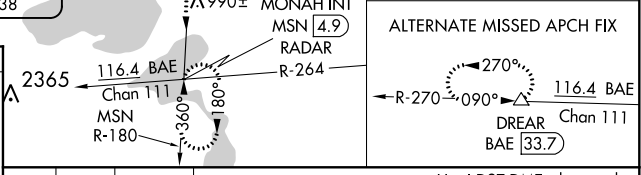
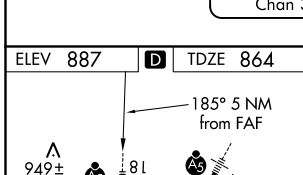
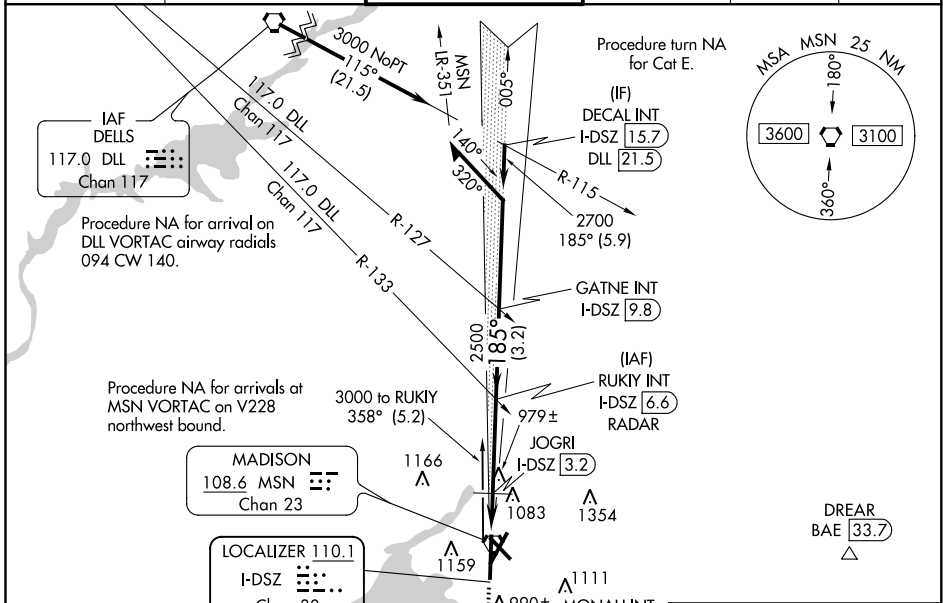
LOC/DME I-DSZ <b>110.1</b> Chan 38	APP CRS <b>185°</b>	Rwy Idg 8606 TDZE 864 Apt Elev 887
--	------------------------	---

# ILS or LOC RWY 18

DANE COUNTY RGNL-TRUAX FLD (MSN)

DME required.	<p>For inop ALS, increase S-ILS 18 Cat E visibility to RVR 4000 and S-LOC 18 Cat C/D/E visibility to RVR 5500.</p> <p>**RVR 1800 authorized with use of FD or AP or HUD to DA.</p>	MALSR 	MISSED APPROACH: Climb to 2700 on MSN VORTAC R-180 to MONAH INT/ MSN VORTAC 4.9 DME/RADAR and hold.
---------------	--	-----------	---

ATIS <b>124.65 278.3</b>	MADISON APP CON * <b>135.45 343.7</b>	MADISON TOWER * <b>119.3 (CTAF) 0 257.8</b>	GND CON <b>121.9 348.6</b>	CLNC DEL <b>121.625</b>	UNICOM <b>122.95</b>
-----------------------------	--	--	-------------------------------	----------------------------	-------------------------



CATEGORY	A	B	C	D	E
S-ILS 18 **	1064/24 200 (200-½)				
S-LOC 18	1240/24	376 (400-½)	1240/35	376 (400-½)	
CIRCLING	1420-1 533 (600-1)	1460-1 573 (600-1)	1460-1½ 573 (600-1½)	1700-2¾ 813 (900-2¾)	1700-3 813 (900-3)

HIRL all Rwy's  
REIL Rwy's 3 and 32  
REIL Rwy 14

EC-3, 15 JUL 2021 to 12 AUG 2021

EC-3, 15 JUL 2021 to 12 AUG 2021