

LOC/DME I-MSN <b>110.1</b> Chan <b>38</b>	APP CRS <b>005°</b>	Rwy Idg TDZE Apt Elev	<b>8005</b> <b>862</b> <b>887</b>
---	------------------------	-----------------------------	---

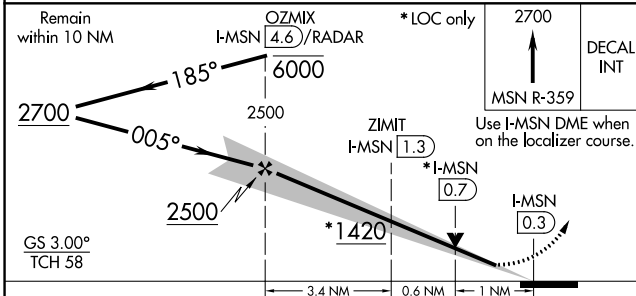
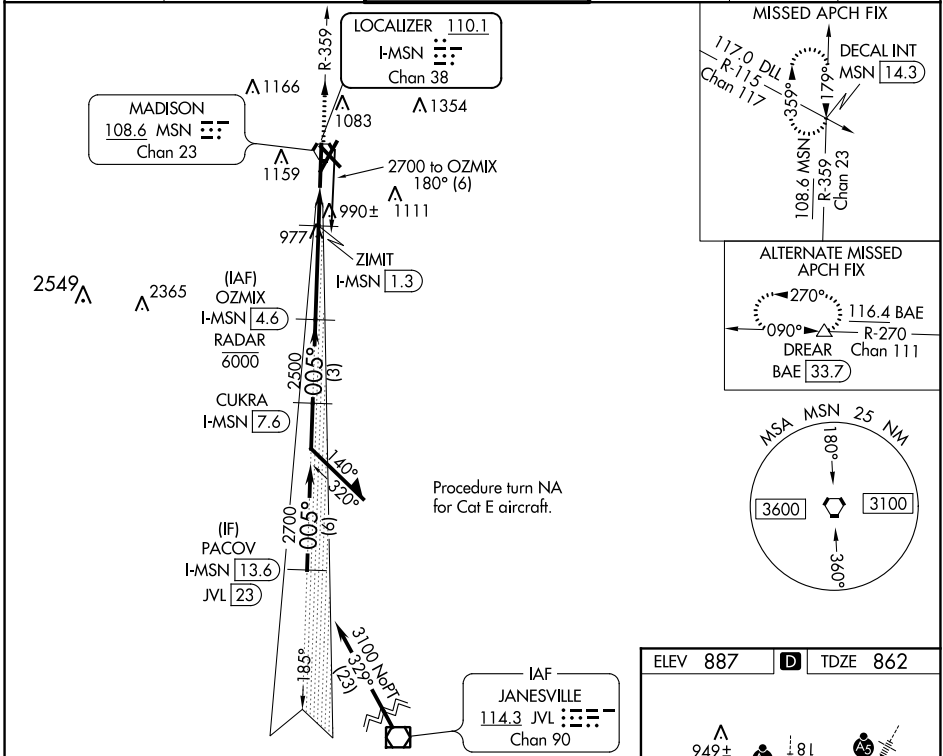
# ILS or LOC/DME RWY 36

DANE COUNTY RGNL-TRUAX FLD (MSN)

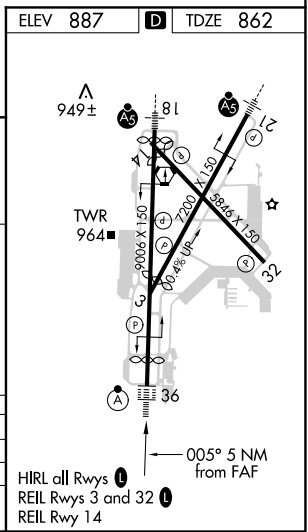
**⚠** DME or RADAR required. For inop ALSF-2, increase S-ILS 36 Cat E visibility to RVR 4000 and S-LOC 36 Cat C/D/E visibility to RVR 5500. **\*\*RVR 1800 authorized with use of FD or AP or HUD to DA.**

**Ⓜ** ALSF-2 **Ⓜ** MISSED APPROACH: Climb to 2700 on MSN VORTAC R-359 to DECAL INT/MSN 14.3 DME and hold.

ATIS <b>124.65 278.3</b>	MADISON APP CON * <b>135.45 343.7</b>	MADISON TOWER * <b>119.3 (CTAF) 0 257.8</b>	GND CON <b>121.9 348.6</b>	CLNC DEL <b>121.625</b>	UNICOM <b>122.95</b>
-----------------------------	--	--	-------------------------------	----------------------------	-------------------------



CATEGORY	A	B	C	D	E
S-ILS 36 **	1062/24 200 (200-½)				
S-LOC 36	1240/24	378 (400-½)	1240/35	378 (400-¾)	
<b>CIRCLING</b>	1420-1 533 (600-1)	1460-1 573 (600-1)	1460-1½ 573 (600-1½)	1700-2¾ 813 (900-¾)	1700-3 813 (900-3)



EC-3, 15 JUL 2021 to 12 AUG 2021

EC-3, 15 JUL 2021 to 12 AUG 2021