

WAAS CH 42829 W21A	APP CRS 212°	Rwy Idg TDZE 887 Apt Elev 887	7015
--	------------------------	---	-------------

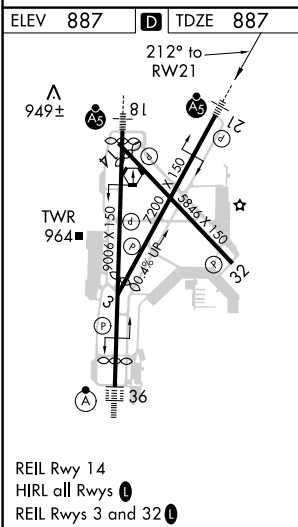
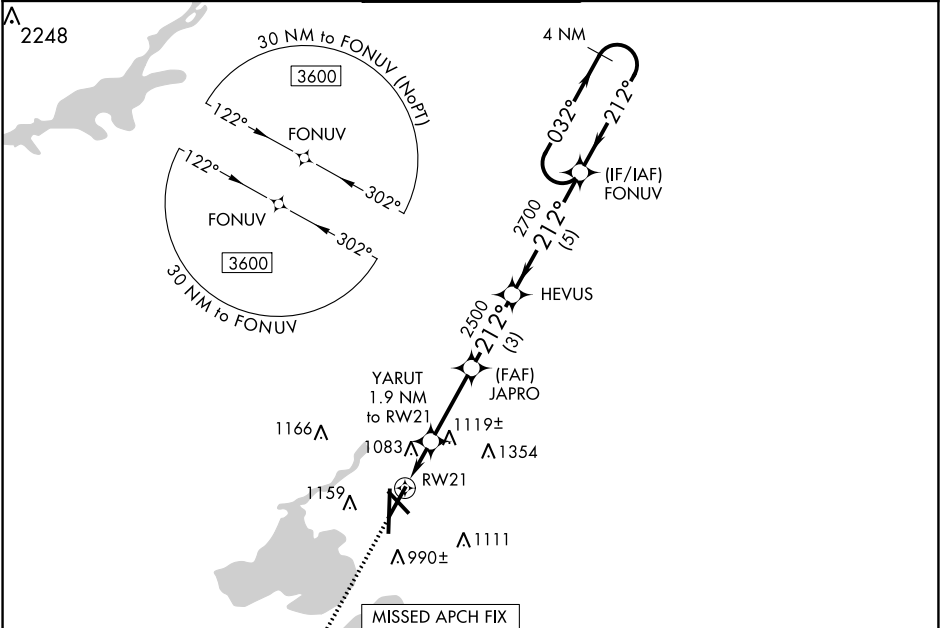
RNAV (GPS) RWY 21
DANE COUNTY RGNL-TRUAX FLD (MSN)

⚠ For uncompensated Baro-VNAV systems, LNAV/VNAV NA below -20°C (-4°F) or above 54°C (130°F). DME/DME RNP-0.3 NA. For inop MALS, increase LNAV/VNAV all Cats visibility to 1 3/4 mile and LNAV Cat C/D visibility to 1 1/2 mile.



MISSED APPROACH:
Climb to 3600 direct WIROD and hold.

ATIS 124.65 278.3	MADISON APP CON * 135.45 343.7	MADISON TOWER * 119.3 (CTAF) 0 257.8	GND CON 121.9 348.6	CLNC DEL 121.625	UNICOM 122.95
-----------------------------	--	--	-------------------------------	----------------------------	-------------------------



ELEV 887	D TDZE 887				
<p>3600 WIROD * LNAV only</p> <p>YARUT 1.9 NM to RW21</p> <p>JAPRO 2500</p> <p>HEVUS 2700</p> <p>FONUV 4 NM Holding Pattern</p> <p>GP 3.00° TCH 53</p>					
<p>1.4 NM</p> <p>0.5</p> <p>3 NM</p> <p>5 NM</p>					
CATEGORY	A	B	C	D	
LPV DA	1087-1/2		200 (200-1/2)		
LNAV/VNAV DA	1412-1 3/8		525 (600-1 3/8)		
LNAV MDA	1380-1/2 493 (500-1/2)		1380-1 493 (500-1)		
C CIRCLING	1420-1 533 (600-1)	1460-1 573 (600-1)	1460-1 1/2 573 (600-1 1/2)	1700-2 3/4 813 (900-2 3/4)	

EC-3, 15 JUL 2021 to 12 AUG 2021

EC-3, 15 JUL 2021 to 12 AUG 2021