

WAAS CH <b>87029</b> <b>W03A</b>	APP CRS <b>032°</b>	Rwy Idg TDZE Apt Elev	<b>6769</b> <b>860</b> <b>887</b>
--	------------------------	-----------------------------	---

# RNAV (GPS) RWY 3

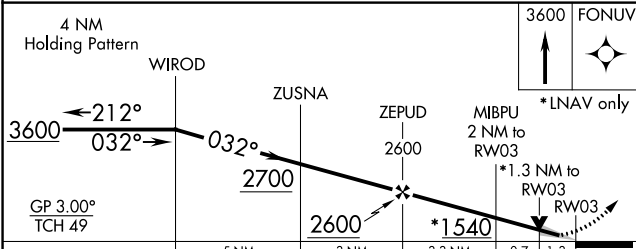
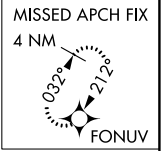
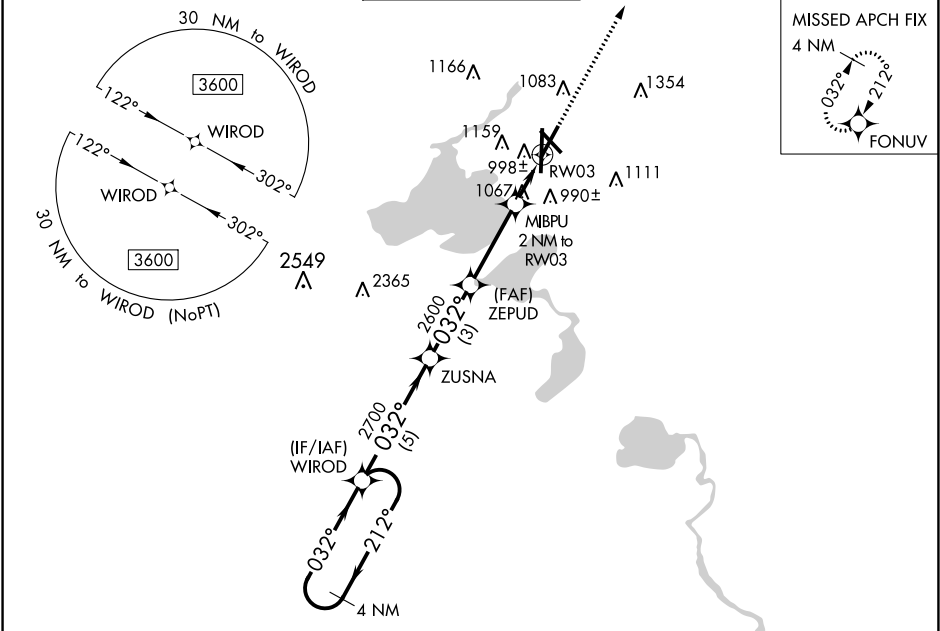
DANE COUNTY RGNL-TRUAX FLD (MSN)



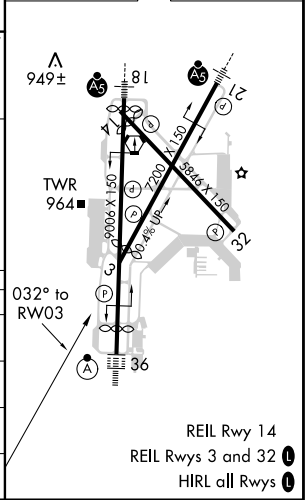
For uncompensated Baro-VNAV systems, LNAV/VNAV NA below -20°C (-4°F) or above 54°C (130°F). DME/DME RNP-0.3 NA.

MISSED APPROACH: Climb to 3600 direct FONUV and hold.

ATIS <b>124.65 278.3</b>	MADISON APP CON * <b>135.45 343.7</b>	MADISON TOWER * <b>119.3 (CTAF) 257.8</b>	GND CON <b>121.9 348.6</b>	CLNC DEL <b>121.625</b>	UNICOM <b>122.95</b>
-----------------------------	--	--	-------------------------------	----------------------------	-------------------------



ELEV 887 TDZE 860



CATEGORY	A	B	C	D
LPV DA		1060-¾	200 (200-¾)	
LNAV/VNAV DA		1179-1	319 (300-1)	
LNAV MDA	1320-1	460 (500-1)	1320-1¾	460 (500-1¾)
CIRCLING	1420-1 533 (600-1)	1460-1 573 (600-1)	1460-1½ 573 (600-1½)	1700-2¾ 813 (900-2¾)

EC-3, 15 JUL 2021 to 12 AUG 2021

EC-3, 15 JUL 2021 to 12 AUG 2021