

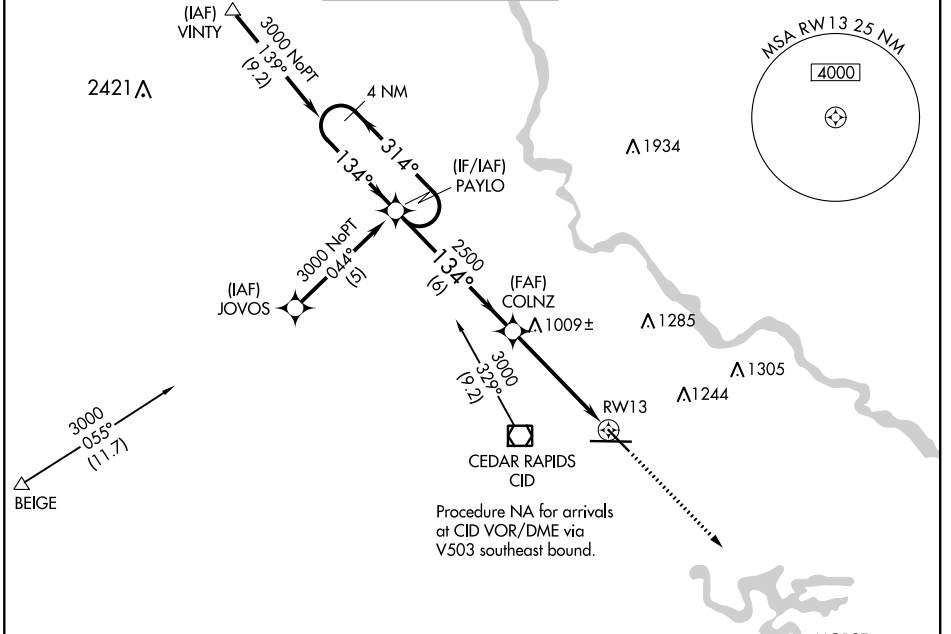
WAAS CH 86201 W13A	APP CRS 134°	Rwy Idg TDZE Apt Elev	6200 869 869
--	------------------------	-----------------------------	---

RNAV (GPS) RWY 13

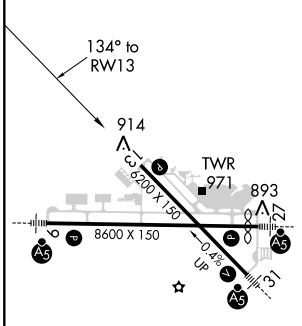
THE EASTERN IOWA (CID)

RNP APCH.	MISSED APPROACH: Climb to 3000 direct MORSE and hold.				
Baro-VNAV NA below -16°C (4°F).					

ATIS 124.15	CEDAR RAPIDS APP CON* 119.7 266.8	CEDAR RAPIDS TOWER* 118.7 (CTAF) 266.8	GND CON 121.6	CLNC DEL 125.45	UNICOM 122.95
-----------------------	---	--	-------------------------	---------------------------	-------------------------



ELEV 869	D	TDZE 869
----------	----------	----------



	4 NM Holding Pattern		VGSI and descent angles not coincident (VGSI Angle 3.00/TCH 51).		3000	MORSE	
	3000 ← 314°		134° →				
	GP 3.00° TCH 40		2500				
			6 NM		3.9 NM		
					1 NM		
CATEGORY	A	B	C	D			
LPV DA	1120-1 251 (300-1)						
LNNAV/VNAV DA	1200-1¼ 331 (400-1¼)						
LNNAV MDA	1260-1 391 (400-1)					1260-1¼ 391 (400-1¼)	

NC-3, 15 JUL 2021 to 12 AUG 2021

NC-3, 15 JUL 2021 to 12 AUG 2021