


WAAS CH <b>72902</b> <b>W27A</b>	APP CRS <b>269°</b>	Rwy Idg TDZE <b>862</b> Apt Elev <b>869</b>	<b>8175</b>
--	------------------------	---	-------------

# RNAV (GPS) RWY 27

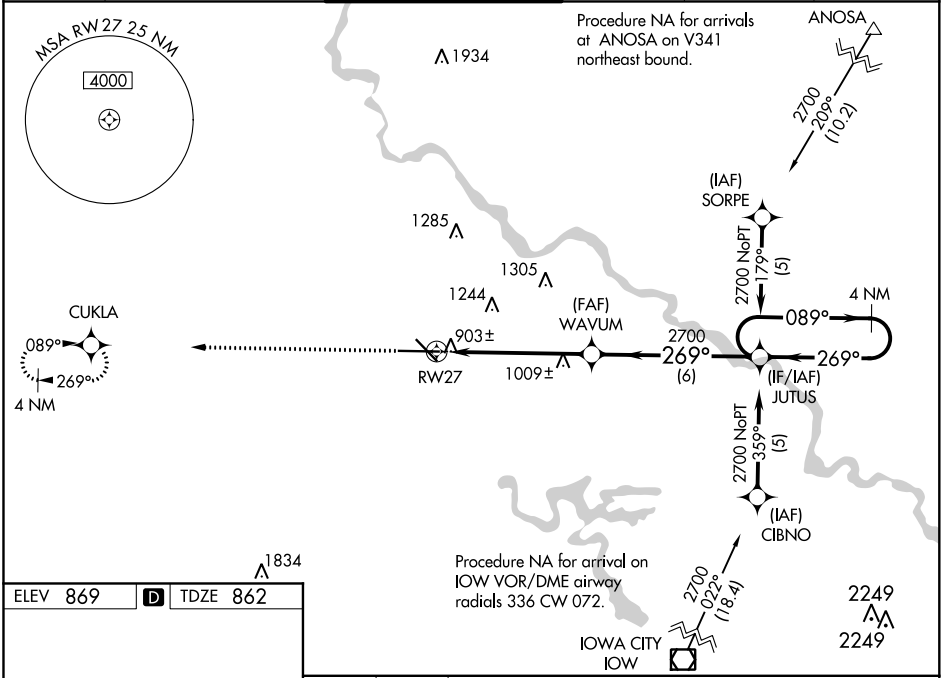
THE EASTERN IOWA (CID)

**⚠** Baro-VNAV NA when using Iowa City altimeter setting.  
**⚠** For uncompensated Baro-VNAV systems, LNAV/VNAV NA below -16°C (4°F) or above 47°C (116°F). DME/DME RNP-0.3 NA. If local altimeter setting not received, use Iowa City altimeter setting and increase all DAs/MDAs 80 feet. For Inop MALS R increase LNAV/VNAV Cat D visibility to RVR 5000 and LNAV Cat D visibility to RVR 6000. VDP NA when using Iowa City altimeter setting.

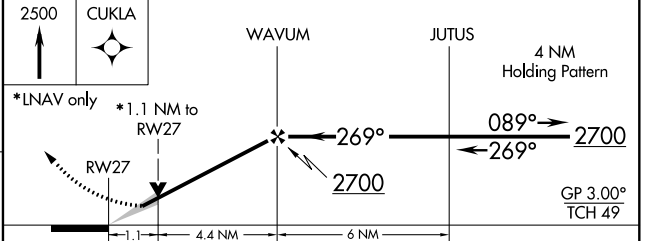
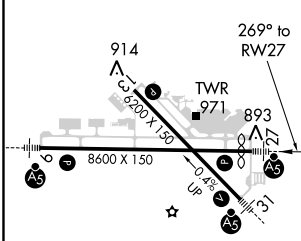
**MALS R** 

**MISSED APPROACH:**  
Climb to 2500 direct CUKLA and hold.

ATIS <b>124.15</b>	CEDAR RAPIDS APP CON* <b>119.7 266.8</b>	CEDAR RAPIDS TOWER* <b>118.7 (CTAF) 266.8</b>	GND CON <b>121.6</b>	CLNC DEL <b>125.45</b>	UNICOM <b>122.95</b>
-----------------------	---	--	-------------------------	---------------------------	-------------------------



ELEV 869	<b>D</b>	TDZE 862
----------	----------	----------



CATEGORY	A	B	C	D
LPV DA	1112/24 250 (300-½)			
LNAV/VNAV DA	1163/24 301 (300-½)			1163/40 301 (300-¾)
LNAV MDA	1260/24 398 (400-½)			1260/50 398 (400-1)
CIRCLING	1280-1 411 (500-1)	1320-1 451 (500-1)	1320-1½ 451 (500-1½)	1420-2 551 (600-2)

MIRL Rwy 13-31 **1**  
 HIRL Rwy 9-27 **1**  
 REIL Rwy 13

CEDAR RAPIDS, IOWA  
 Amdt 1A 12OCT17

41°53'N-91°43'W

# RNAV (GPS) RWY 27

NC-3, 15 JUL 2021 to 12 AUG 2021

NC-3, 15 JUL 2021 to 12 AUG 2021