

WAAS CH <b>77603</b> <b>W09A</b>	APP CRS <b>089°</b>	Rwy Idg TDZE Apt Elev	<b>8175</b> <b>857</b> <b>869</b>
--	------------------------	-----------------------------	---

# RNAV (GPS) RWY 9

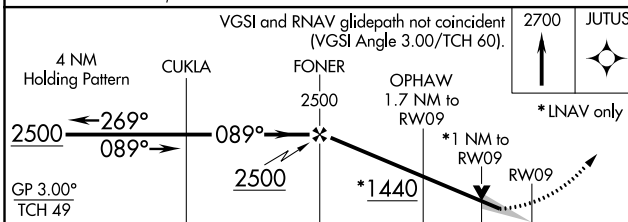
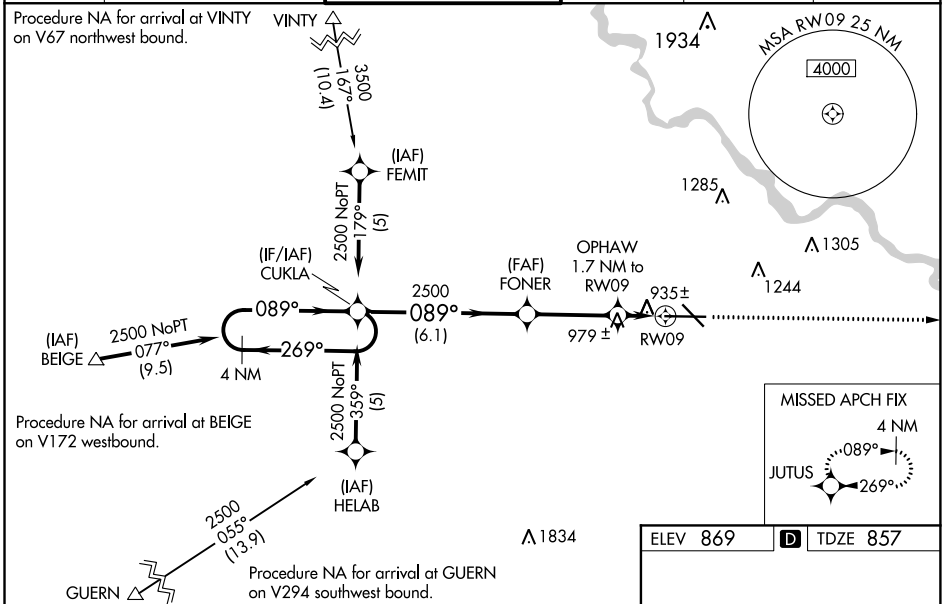
THE EASTERN IOWA (CID)

**⚠** Baro-VNAV NA when using Iowa City altimeter setting. For uncompensated Baro-VNAV systems, LNAV/VNAV NA below -16°C (4°F) or above 47°C (116°F). DME/DME RNP-0.3 NA. When local altimeter setting not received, use Iowa City altimeter setting and increase all DA 64 feet and all MDA 80 feet; increase LNAV/VNAV all Cats visibility to RVR 5000 and LNAV Cat C to RVR 4000. For inoperative MALSRS increase LNAV Cat D visibility to RVR 6000. VDP NA with Iowa City altimeter setting. When using Iowa City altimeter setting; for inoperative MALSRS, increase LPV all Cats visibility to RVR 5000, LNAV Cat C visibility to RVR 6000 and LNAV Cat D visibility to 1 1/2 miles.  
#RVR 1800 authorized with use of FD or AP or HUD to DA, NA when using Iowa City altimeter setting.

MALSRS

MISSED APPROACH:  
Climb to 2700 direct  
JUTUS and hold.

ATIS <b>124.15</b>	CEDAR RAPIDS APP CON * <b>119.7 266.8</b>	CEDAR RAPIDS TOWER * <b>118.7 (CTAF) 0 266.8</b>	GND CON <b>121.6</b>	CLNC DEL <b>125.45</b>	UNICOM <b>122.95</b>
-----------------------	--	---	-------------------------	---------------------------	-------------------------



ELEV 869	TDZE 857
----------	----------

914

TWR 971

893

8600 X 150

0.43° UP

089° to RWY 9

MIRL Rwy 13-31

HIRL Rwy 9-27

REIL Rwy 13

CATEGORY	A	B	C	D
LPV DA#		1057/24	200 (200-1/2)	
LNAV/VNAV DA		1204/40	347 (400-3/4)	
LNAV MDA	1280-1	1320-1	1320-1 1/2	1240/50 383(400-1)
CIRCLING	411 (500-1)	451 (500-1)	451 (500-1 1/2)	1420-2 551 (600-2)

NC-3, 15 JUL 2021 to 12 AUG 2021

NC-3, 15 JUL 2021 to 12 AUG 2021