

EC-3, 09 SEP 2021 to 07 OCT 2021

ARRIVAL ROUTE DESCRIPTION

BAGEL TRANSITION (BAGEL.PANGG3)

FORT WAYNE TRANSITION (FWA.PANGG3)

LITCHFIELD TRANSITION (LFD.PANGG3)

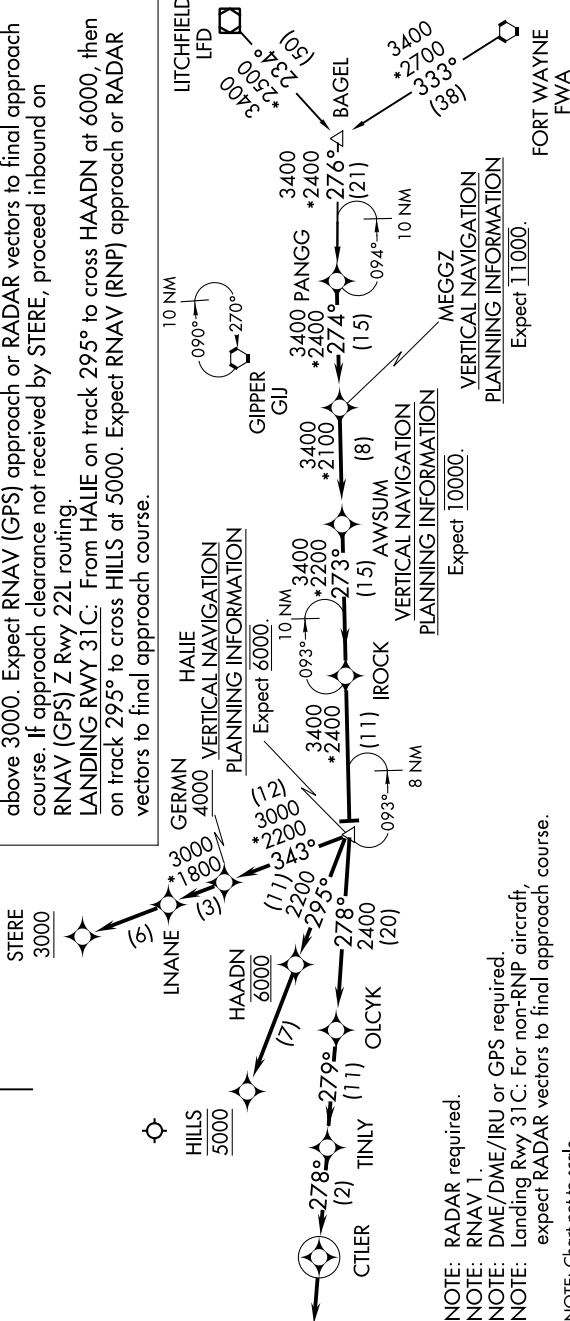
From PANGG on track 274° to MEGGZ, then on track 274° to AWSUM, then on track 273° to IROCK, then on track 273° to HALIE.

LANDING RWY 4R/13C: From HALIE on track 278° to OLCYK, then on track 279° to TINLY, then on track 278° to CTILER, then on track 278°. Expect RADAR vectors to final approach course.

LANDING RWY 22L: From HALIE on track 343° to cross GERMN at or above 4000, then on track 343° to LNANE, then on track 343° to cross STERE at or above 3000. Expect RNAV (GPS) approach or RADAR vectors to final approach course. If approach clearance not received by STERE, proceed inbound on RNAV (GPS) Z Rwy 22L routing.

LANDING RWY 31C: From HALIE on track 295° to cross HAADN at 6000, then on track 295° to cross HILLS at 5000. Expect RNAV (RNP) approach or RADAR vectors to final approach course.

CHICAGO APP CON
128.2 353.875
D-ATIS
132.75



NOTE: RADAR required.
 NOTE: RNAV 1.
 NOTE: DME/DME/IRU or GPS required.
 NOTE: Landing Rwy 31C: For non-RNP aircraft, expect RADAR vectors to final approach course.
 NOTE: Chart not to scale.

EC-3, 09 SEP 2021 to 07 OCT 2021