

APP CRS	Rwy Idg	<b>6059</b>
<b>138°</b>	TDZE	<b>611</b>
	Apt Elev	<b>620</b>

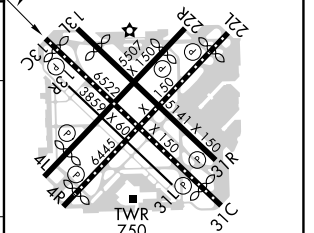
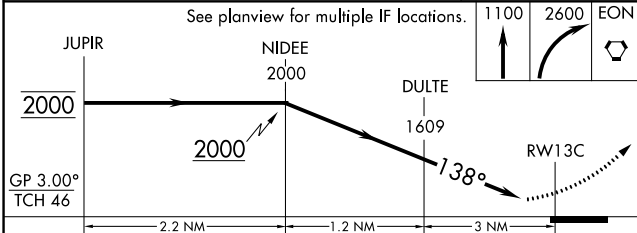
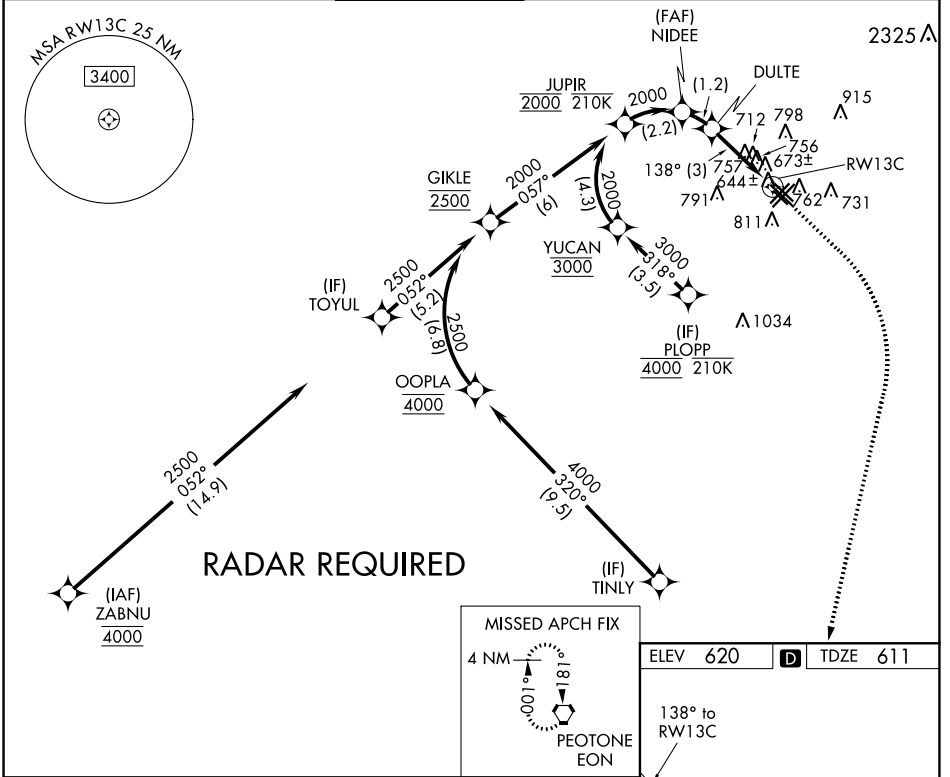
# RNAV (RNP) Y RWY 13C

CHICAGO MIDWAY INTL (MDW)

▼ For uncompensated Baro-VNAV systems, procedure NA below -19°C (-2°F) or above 54°C (130°F). RF required. GPS required. Night landing: Rwy 13C Cat C and D operational VGSIs required, remain on or above VGSIs glidepath until threshold.

MISSED APPROACH: Climb to 1100 then climbing right turn to 2600 direct EON VORTAC and hold.

D-ATIS	CHICAGO APP CON	MIDWAY TOWER	GND CON	CLNC DEL	CPDLC
<b>132.75</b>	<b>128.2 353.875</b>	<b>135.2 269.125</b>	<b>121.65</b>	<b>124.625</b>	



CATEGORY	A	B	C	D
RNP 0.11 DA		891/50	280 (300-1)	
RNP 0.18 DA		997-1¼	386 (400-1¼)	
RNP 0.30 DA		1049-1½	438 (500-1½)	

**AUTHORIZATION REQUIRED**

HIRL Rws 13C-31C and 4R-22L  
 MIRL Rws 4L-22R, 13L-31R, and 13R-31L  
 REIL Rws 4R, 22L, and 31C  
 RLS Rws 13C and 31C

EC-3, 09 SEP 2021 to 07 OCT 2021

EC-3, 09 SEP 2021 to 07 OCT 2021