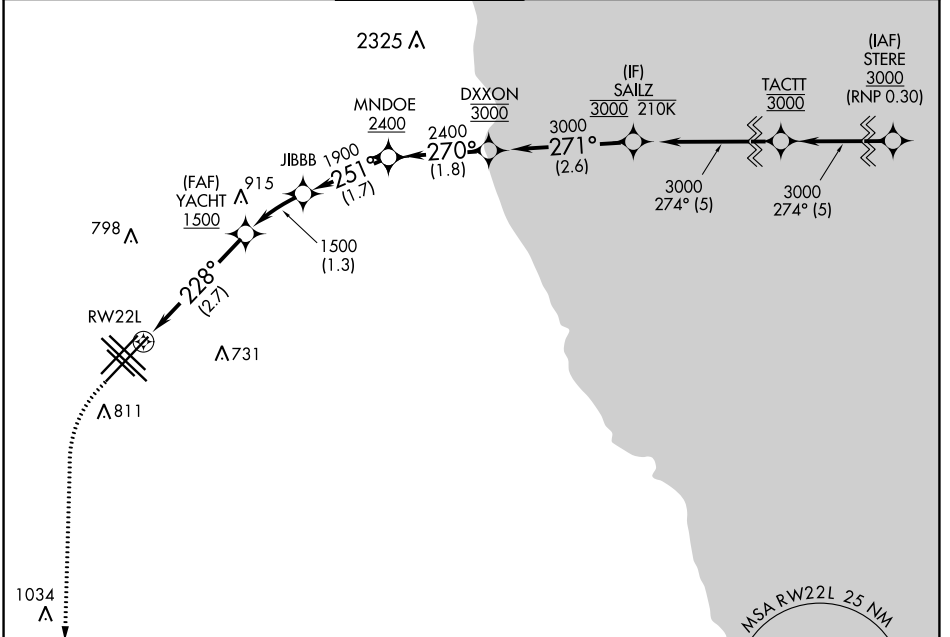


APP CRS	Rwy Idg	5810
228°	TDZE	611
	Apt Elev	620

RNAV (RNP) Y RWY 22L

CHICAGO MIDWAY INTL (MDW)

RNP AR APCH. RF required.			MISSED APPROACH: Climb to 1300 then climbing left turn to 2600 direct EON VORTAC and hold.		
<p>▼ For uncompensated Baro-VNAV systems, procedure NA below -20°C or above 54°C.</p>					
D-ATIS	CHICAGO APP CON	MIDWAY TOWER	GND CON	CLNC DEL	CPDLC
132.75	128.2 353.875	135.2 269.125	121.65	124.625	



EC-3, 09 SEP 2021 to 07 OCT 2021

EC-3, 09 SEP 2021 to 07 OCT 2021

ELEV 620	D	TDZE 611
----------	----------	----------

228° to RW22L

HIRL Rwy 13C-31C and 4R-22L
MIRL Rwy 4L-22R, 13L-31R, and 13R-31L
REIL Rwy 4R, 22L, and 31C
RLS Rwy 13C and 31C

TWR 750

MISSED APCH FIX

4 NM

181°

1000

PEOTONE EON

1300 2600 EON

VGSI and RNAV glidepath not coincident (VGSI Angle 3.00°/TCH 43).

RW22L

YACHT 1500

JIBBB 1900

251°

270°

271°

3000

3000

3000

GP 3.00° TCH 50

2.7 NM	1.3 NM	1.7 NM	1.8 NM	2.6 NM
CATEGORY	A	B	C	D
RNP 0.18 DA		942/50	331 (400-1)	
RNP 0.30 DA		992/60	381 (400-1¼)	

AUTHORIZATION REQUIRED