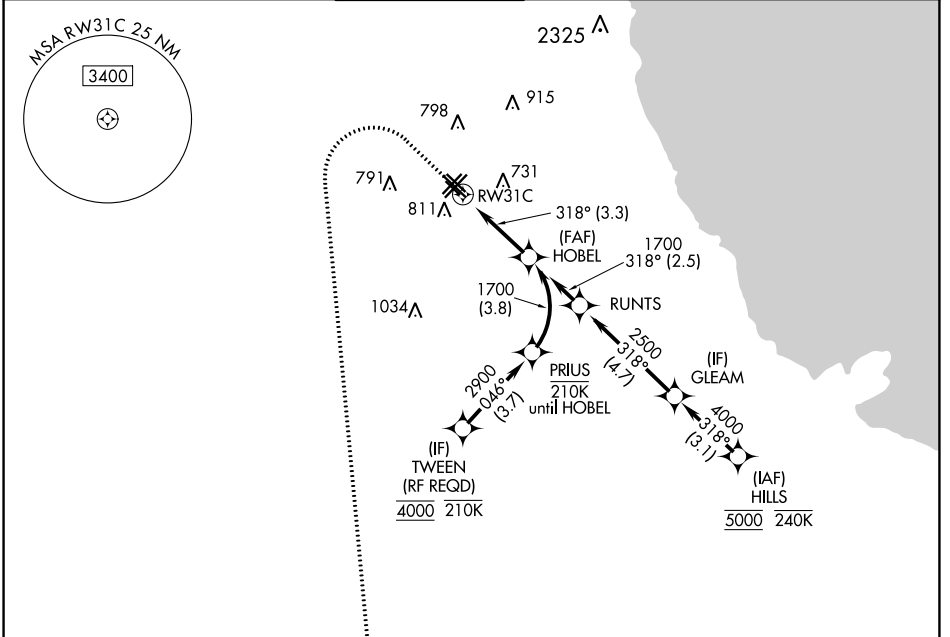


APP CRS 318°	Rwy Idg 5826
	TDZE 613
	Apt Elev 620

RNAV (RNP) Y RWY 31C

CHICAGO MIDWAY INTL (MDW)

RNP AR APCH.			MISSED APPROACH: Climb to 1100 then climbing left turn to 2600 direct EON VORTAC and hold.		
▼ For uncompensated Baro-VNAV systems, procedure NA below -20°C or above 54°C.					
D-ATIS 132.75	CHICAGO APP CON 128.2 353.875	MIDWAY TOWER 135.2 269.125	GND CON 121.65	CLNC DEL 124.625	CPDLC



EC-3, 09 SEP 2021 to 07 OCT 2021

EC-3, 09 SEP 2021 to 07 OCT 2021

ELEV 620	D	TDZE 613
----------	----------	----------

HIRL Rwy 13C-31C and 4R-22L
MIRL Rwy 4L-22R, 13L-31R, and 13R-31L
REIL Rwy 4R, 22L, and 31C
RLLS Rwy 13C and 31C

TWR 750

318° to RW31C

MISSED APCH FIX

4 NM

181

100

PEOTONE EON

1100

2600

EON

VGSI and RNAV glidepath not coincident (VGSI Angle 3.00/TCH 63).

HOBEL 1700

1700

RW31C

318°

See planview for multiple IF locations.

3.3 NM

GP 3.00° TCH 48

CATEGORY	A	B	C	D
RNP 0.30 DA	1029/60 416 (500-1¼)			

AUTHORIZATION REQUIRED