

WAAS CH 50541 W13A	APP CRS 138°	Rwy Idg TDZE Apt Elev	6059 611 620
--	------------------------	-----------------------------	---

RNAV (GPS) Z RWY 13C

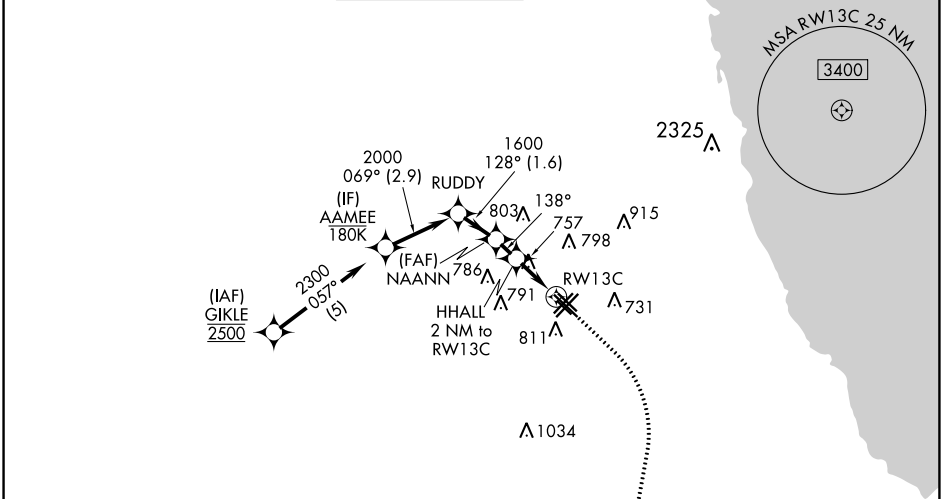
CHICAGO MIDWAY INTL (MDW)

RNP APCH.

⚠ Circling to Rwy 31R NA at night. Rwy 13C helicopter visibility reduction below RVR 4000 NA. For uncompensated Baro-VNAV systems, procedure NA below -19°C or above 54°C.

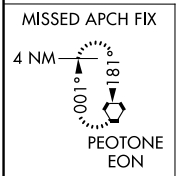
MISSED APPROACH: Climb to 1100 then climbing right turn to 2600 direct EON VORTAC and hold.

D-ATIS 132.75	CHICAGO APP CON 128.2 353.875	MIDWAY TOWER 135.2 269.125	GND CON 121.65	CLNC DEL 124.625	CPDLC
-------------------------	---	--------------------------------------	--------------------------	----------------------------	-------



EC-3, 09 SEP 2021 to 07 OCT 2021

EC-3, 09 SEP 2021 to 07 OCT 2021



	A	B	C	D
GP 3.00° TCH 46	2300	2000	1600	1100
WPT	AAMEE	RUDDY	NAANN	HHALL
Alt	2300	2000	1600	1100
Dist	2.9 NM	1.6 NM	1 NM	0.9 NM
Category	A	B	C	D
LPV DA		861/40	250 (300-¾)	
RNAV/VNAV DA		1033-1¼	422 (500-1¼)	
RNAV MDA	1020/55	409 (400-1)	1020/60	409 (400-1¼)
CIRCLING	1120-1	500 (500-1)	1340-2	1340-2¼
			720 (800-2)	720 (800-2¼)

ELEV 620 **D** TDZE 611

HIRL Rwy 13C-31C and 4R-22L
MIRL Rwy 4L-22R, 13L-31R, and 13R-31L
REIL Rwy 4R, 22L, and 31C
RLS Rwy 13C and 31C

Diagram showing RWY 13C and 31C with various lights and markings. Includes a 138° bearing to RWY 13C.